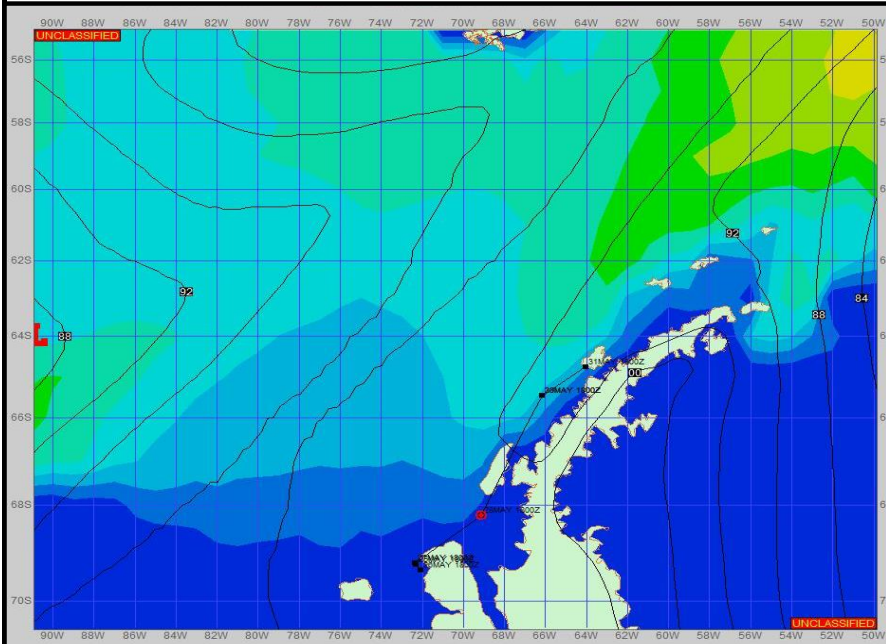
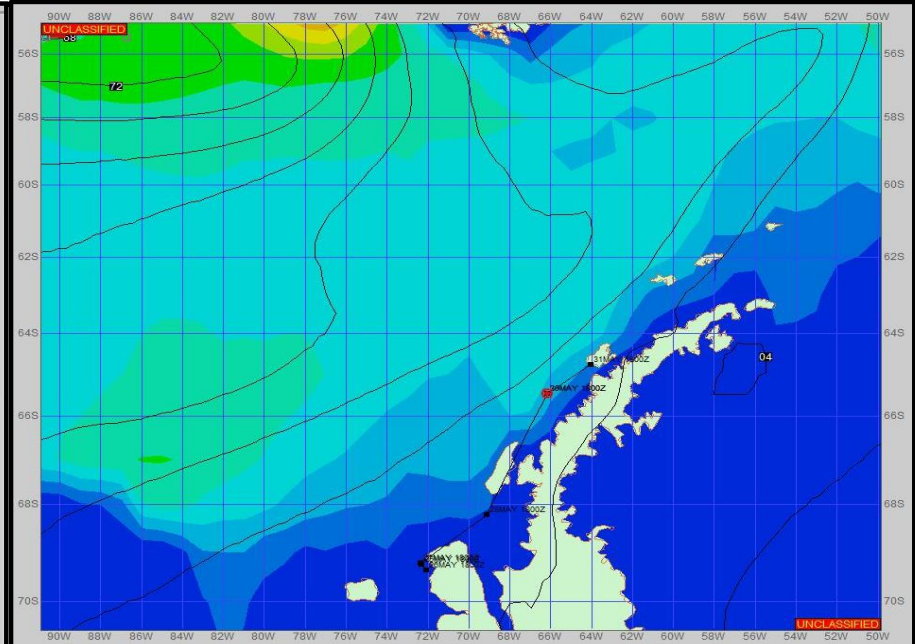


SURFACE ANALYSIS 28-May-2023 18Z



Seas (FT)

SURFACE FORECAST 30-May-2023 06Z



METSIT 21Z 28-May Low pressure due west, as seen on the SFC Analysis chart, will weaken early in the forecast period, but pushes a trough to the northeast resulting in gusty winds toward the south, but switching to the west as it passes late in the period. Later in the forecast, as seen on the SFC Forecast chart, a low begins approaching from the northwest. This pushes a bubble of slightly higher sea states, after the forecast period ends. Winds may differ from those forecast due to funneling/sheltering effects of islands.

FORECASTER NOTES MCMURDO STATION WINTER OPERATIONS ARE IN EFFECT. WEAX SUPPORT WILL BE DONE BY THE MCMURDO STATION WEATHER OFFICE AND ISSUED BY 2100Z. SEE CONTACT INFO BELOW.

VALID TIME	28-May 21Z	29-May 06Z	29-May 12Z	29-May 18Z	30-May 00Z	30-May 06Z	30-May 12Z	30-May 18Z
SKY CONDITION	CLEAR	PARTLY CLOUDY	PARTLY CLOUDY	PARTLY CLOUDY	PARTLY CLOUDY	PARTLY CLOUDY	PARTLY CLOUDY	MOSTLY CLOUDY
WEATHER	NONE	NONE	NONE	NONE	NONE	NONE	NONE	NONE
VISIBILITY (NM)	UNRESTRICTED	UNRESTRICTED	UNRESTRICTED	UNRESTRICTED	UNRESTRICTED	UNRESTRICTED	UNRESTRICTED	UNRESTRICTED
SFC WINDS (DIR & KTS)	VRB 0-5	VRB 0-5	SW 15-20 GUST 25	SW 15-20 GUST 25	SW 15-20 GUST 25	WSW 15-20 GUST 25	WSW 15-20 GUST 25	W 15-20 GUST 25
SFC MAX/MIN (°C)	-5 / -8				-3 / -5			
SST RANGE (°C)	-1 / -2				-1 / -2			
SEAS (DIR & FT)	W 0-2	W 0-2	W 2-4	WNW 4-6	WNW 4-6	WNW 4-6	NE 4-6	NE 4-6
ICE ACCRETION	LIGHT	LIGHT	LIGHT	LIGHT	LIGHT	LIGHT	LIGHT	LIGHT