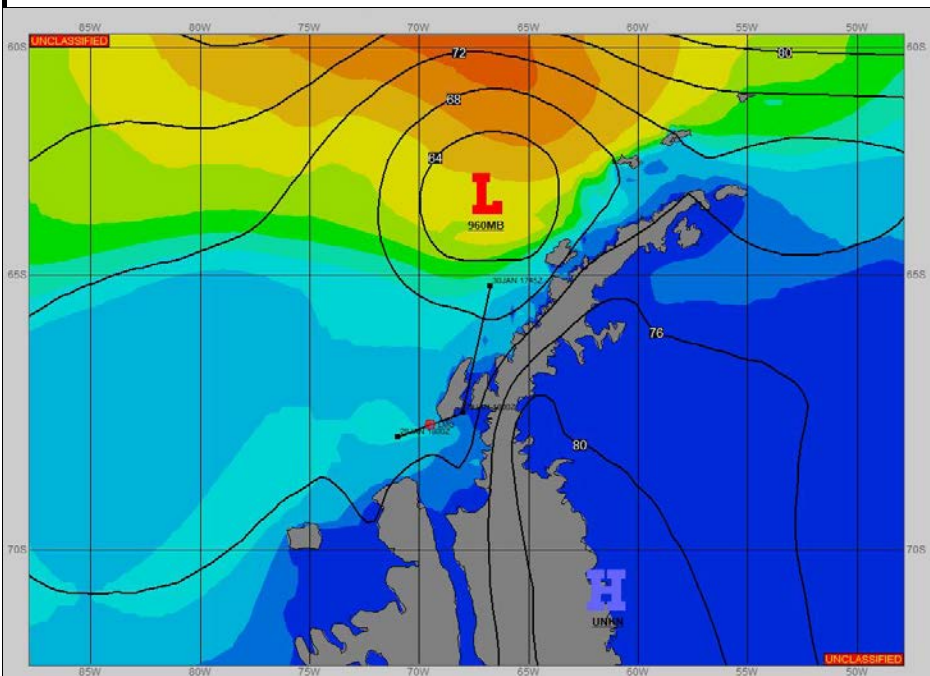
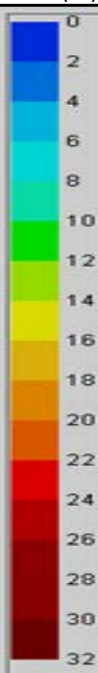


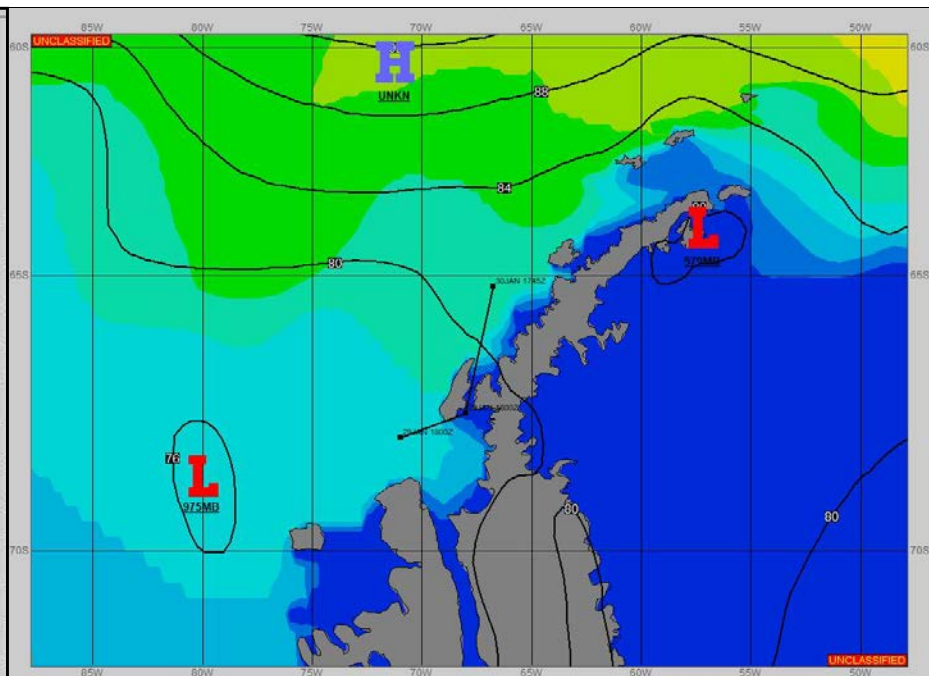
SURFACE ANALYSIS 29-Jan-2023 06Z



Seas (FT)



SURFACE FORECAST 30-Jan-2023 18Z



METSIT 06Z 29-Jan 960MB LOW NEAR 63S 067W TO FILL AND MOVE EAST. INCREASED WESTERLY PRESSURE GRADIENT BETWEEN HIGH PRESSURE TO THE NORTH AND LOW PRESSURE IN THE BELLINGSHAUSEN SEA TO PUSH THE WIND SPEEDS INTO THE 15-20 KNOT RANGE FOR THE SECOND HALF OF THE FORECAST PERIOD. MAY SEE SOME BREAKS IN THE GENERALLY OVERCAST SKIES. VISIBILITY MAY BE REDUCED IN PRECIPITATION AND FOG FROM 30/0000Z TO 30/1200Z AS A WEAK BOUNDARY MOVES ACROSS THE OPERATING AREA, OTHERWISE EXPECT PERIODS OF REDUCED VISIBILITY IN FOG.

FORECASTER NOTES WINDS MAY DIFFER FROM THOSE FORECAST DUE TO FUNNELING/SHELTERING EFFECTS OF ISLANDS.

VALID TIME	29-Jan 12Z	29-Jan 18Z	30-Jan 00Z	30-Jan 06Z	30-Jan 12Z	30-Jan 18Z	31-Jan 00Z	31-Jan 06Z
SKY CONDITION	MOSTLY CLOUDY	CLOUDY	CLOUDY	CLOUDY	CLOUDY	PARTLY CLOUDY	CLOUDY	MOSTLY CLOUDY
WEATHER	NONE	FOG	FOG	MIXED & FOG	FOG	NONE	FOG	NONE
VISIBILITY (NM)	UNRESTRICTED	2 - 4	1 - 3	1/2 - 1	1 - 3	UNRESTRICTED	3 - 5	UNRESTRICTED
SFC WINDS (DIR & KTS)	E 10-20	NE 5-10	NE 5-10	NW 10-15	NE 15-20	W 15-20	NW 15-20	NW 15-20
SFC MAX/MIN (°C)	1/-2				3/0			
SST RANGE (°C)	2/1				2/1			
SEAS (DIR & FT)	NE 2-4	NW 0-2	NW 0-2	NW 9-11	NW 9-11	NW 8-10	NW 7-9	NW 8-10
ICE ACCRETION	LIGHT	LIGHT	LIGHT	LIGHT	NIL	NIL	NIL	NIL