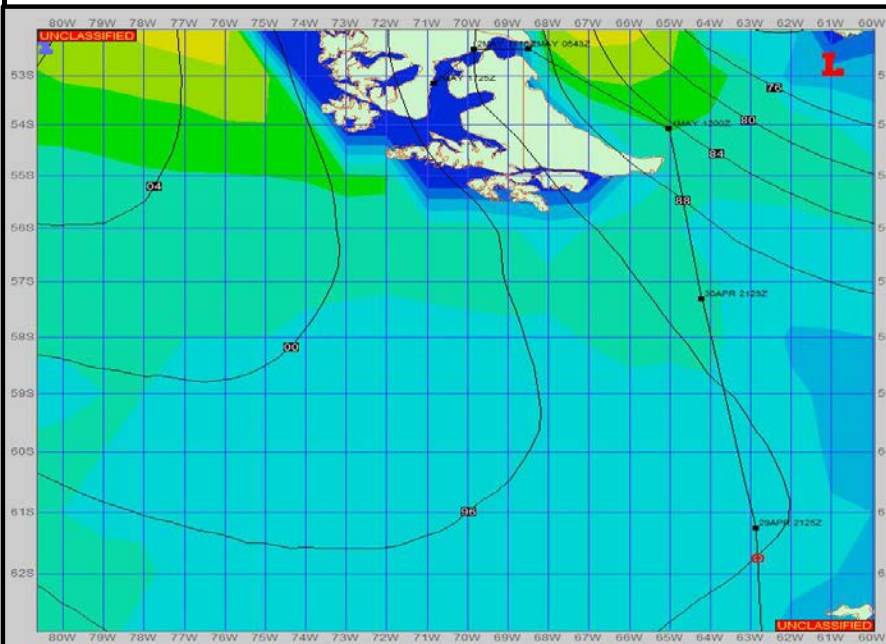
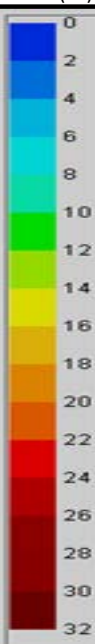


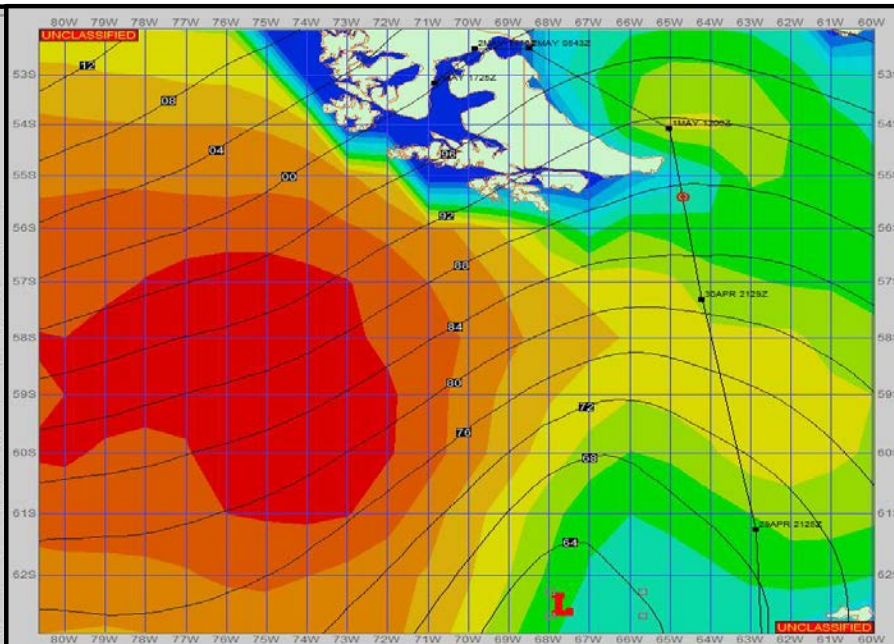
SURFACE ANALYSIS 29-Apr-2023 18Z



Seas (FT)



SURFACE FORECAST 1-May-2023 06Z



METSIT 21Z 29-Apr Winds start to pickup as the heading out into the open waters. With a tight pressure gradient between high pressure west of the continent and a low pressure in the Bellingshausen Sea, you'll see those winds pickup significantly in the forecast period. Sea states will remain steady during the trek. Late in the forecast as the low moves north, it'll be race to get around to the eastern side as a massive sea swell will be moving in after this forecast period.

FORECASTER NOTES MCMURDO STATION WINTER OPERATIONS ARE IN EFFECT. WEAX SUPPORT WILL BE DONE BY THE MCMURDO STATION WEATHER OFFICE AND ISSUED BY 2100Z. SEE CONTACT INFO BELOW.

VALID TIME	29-Apr 21Z	30-Apr 06Z	30-Apr 12Z	30-Apr 18Z	1-May 00Z	1-May 06Z	1-May 12Z	1-May 18Z
SKY CONDITION	MOSTLY CLOUDY	MOSTLY CLOUDY	MOSTLY CLOUDY	CLOUDY	CLOUDY	CLOUDY	PARTLY CLOUDY	PARTLY CLOUDY
WEATHER	NONE	NONE	NONE	NONE	NONE	RAIN	RAIN	NONE
VISIBILITY (NM)	UNRESTRICTED	UNRESTRICTED	UNRESTRICTED	UNRESTRICTED	UNRESTRICTED	4 - 6	4 - 6	UNRESTRICTED
SFC WINDS (DIR & KTS)	SW 15-20	SW 10-20 GUST 25	NW 10-20	NW 15-20 GUST 30	NW 25-30 GUST 40	W 25-30 GUST 40	W 30-35 GUST 50	W 40-45 GUST 60
SFC MAX/MIN (°C)	2 / -1				8 / 4			
SST RANGE (°C)	2 / 1				8 / 2			
SEAS (DIR & FT)	SW 6-8	SW 6-8	SW 6-8	SW 8-10	W 10-12	SW 8-10	NW 10-12	W 10-12
ICE ACCRETION	NIL	NIL	NIL	NIL	NIL	NIL	NIL	NIL