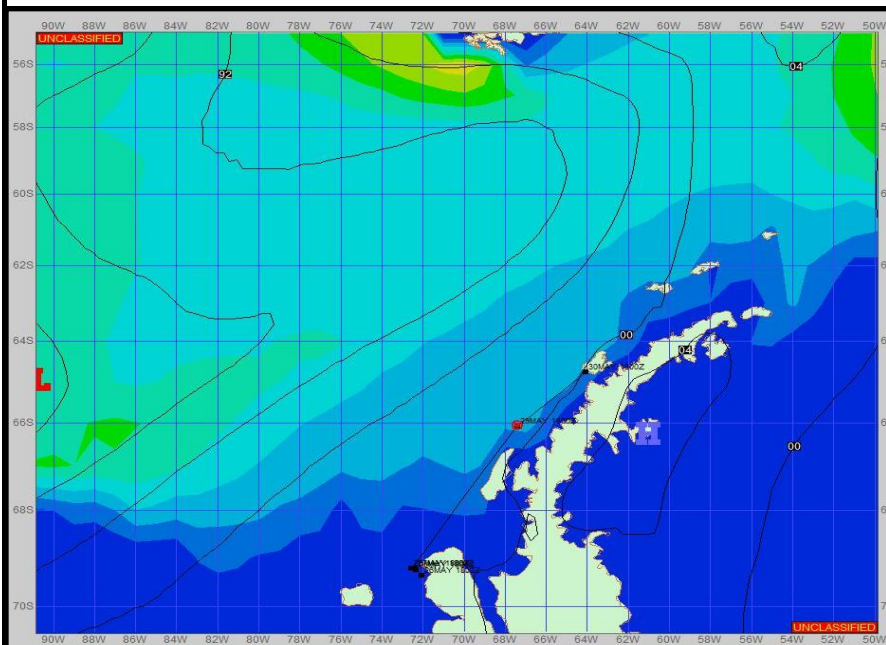


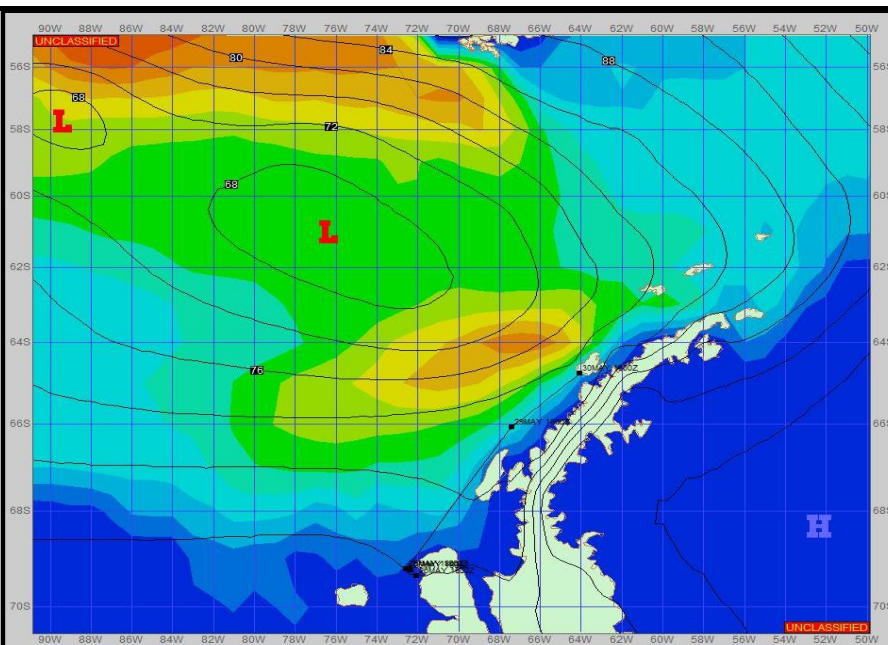
SURFACE ANALYSIS 29-May-2023 18Z



Seas (FT)



SURFACE FORECAST 31-May-2023 06Z



METSIT 21Z 29-May Generally pleasant conditions with little variability in conditions. However, late in the period, a series of low pressure systems will start southeast toward the peninsula. The pressure gradient ahead of the first low, pushes a bubble of slightly higher sea states, while the second low helps keep those sea states up. Winds may differ from those forecast due to funneling/sheltering effects of islands. This is my final forecast unless otherwise required. Timely observations received from your ship are greatly appreciated. Outlook for arrival at Palmer Station: Northeasterly winds 10-15, with cloudy skies and light snow ending w/occasional flurries. -5°C/-9°C

FORECASTER NOTES MCMURDO STATION WINTER OPERATIONS ARE IN EFFECT. WEAX SUPPORT WILL BE DONE BY THE MCMURDO STATION WEATHER OFFICE AND ISSUED BY 2100Z. SEE CONTACT INFO BELOW.

VALID TIME	29-May 21Z	30-May 06Z	30-May 12Z	30-May 18Z	31-May 00Z	31-May 06Z	31-May 12Z	31-May 18Z
SKY CONDITION	MOSTLY CLOUDY	MOSTLY CLOUDY	MOSTLY CLOUDY	CLOUDY	CLOUDY	CLOUDY	CLOUDY	CLOUDY
WEATHER	NONE	NONE	NONE	SNOW	SNOW	NONE	NONE	NONE
VISIBILITY (NM)	UNRESTRICTED	UNRESTRICTED	UNRESTRICTED	UNRESTRICTED	UNRESTRICTED	UNRESTRICTED	UNRESTRICTED	UNRESTRICTED
SFC WINDS (DIR & KTS)	SW 15-20	SW 15-20	SW 15-20	W 15-20	SW 10-15	SW 10-15	SW 10-15	SW 10-15
SFC MAX/MIN (°C)	-3 / -7				-5 / -9			
SST RANGE (°C)	-1 / -2				-1 / -2			
SEAS (DIR & FT)	NW 4-6	NE 4-6	NE 4-6	NE 4-6	NE 6-8	NE 6-8	NE 6-8	NE 6-8
ICE ACCRETION	LIGHT	LIGHT	LIGHT	LIGHT	LIGHT	LIGHT	LIGHT	LIGHT