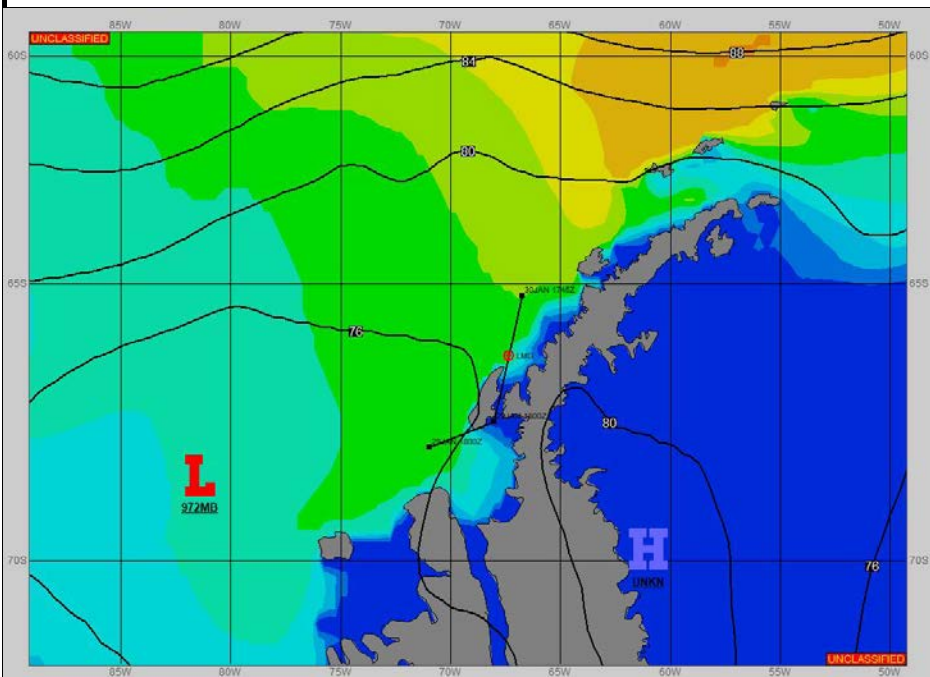
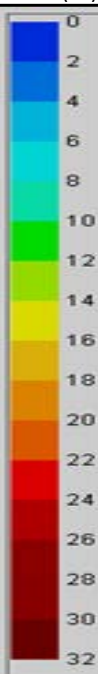


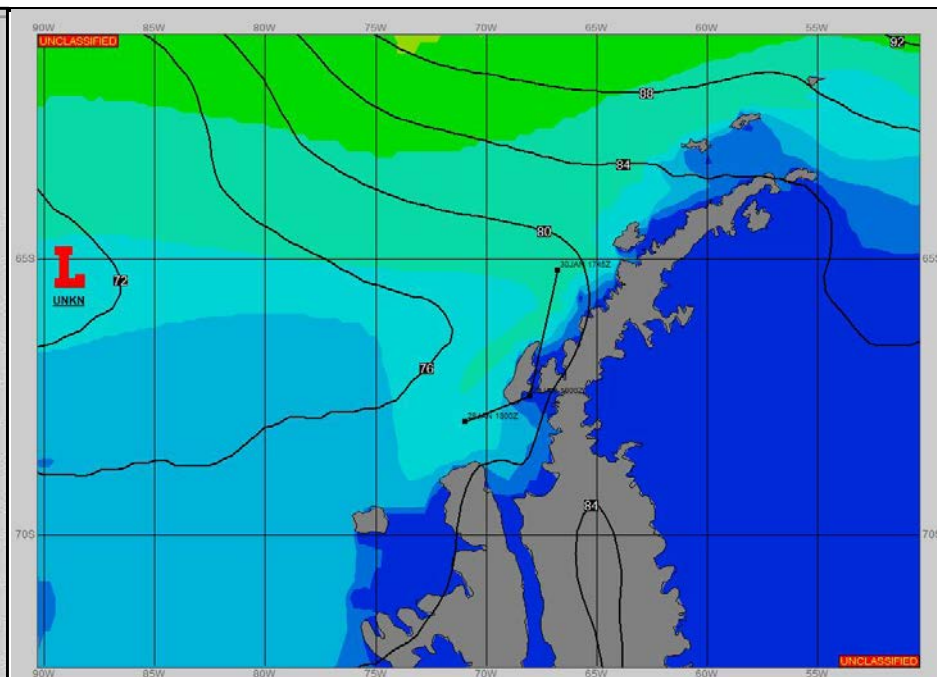
**SURFACE ANALYSIS 30-Jan-2023 06Z**



Seas (FT)



**SURFACE FORECAST 31-Jan-2023 18Z**



**METSIT 06Z 30-Jan** LOW PRESSURE IN THE BELLINGSHAUSEN SEA TO MOVE A FRONTAL WAVE ACROSS FORECAST SHIP POSITION FROM APPROXIMATELY 31/0900Z THROUGH THE END OF THE PERIOD. EXPECT WINDS GUSTING NEAR 30 KNOTS FROM 31/1200Z THROUGH 31/2100Z, AND REDUCED VISIBILITY IN RAIN AND FOG, AT TIMES LESS THAN 1 MILE FROM 31/1500Z THROUGH 31/2100Z.

**FORECASTER NOTES** WINDS MAY DIFFER FROM THOSE FORECAST DUE TO FUNNELING/SHELTERING EFFECTS OF ISLANDS. FORECAST BASED ON COORDINATES FROM 28 JAN 2023 SITREP.

VALID TIME	30-Jan 12Z	30-Jan 18Z	31-Jan 00Z	31-Jan 06Z	31-Jan 12Z	31-Jan 18Z	1-Feb 00Z	1-Feb 06Z
SKY CONDITION	MOSTLY CLOUDY	MOSTLY CLOUDY	MOSTLY CLOUDY	MOSTLY CLOUDY	CLOUDY	CLOUDY	CLOUDY	CLOUDY
WEATHER	NONE	NONE	NONE	NONE	RAIN & FOG	RAIN & FOG	RAIN & FOG	RAIN & FOG
VISIBILITY (NM)	UNRESTRICTED	UNRESTRICTED	UNRESTRICTED	UNRESTRICTED	1 - 3	1/2 - 1	1 - 3	1 - 3
SFC WINDS (DIR & KTS)	W 15-20	W 10-15	W 10-15	N 10	NE 20-25 GUST 30	NW 20-25 GUST 30	NW 15-20	N 10-15
SFC MAX/MIN (°C)	3/1				3/1			
SST RANGE (°C)	2/1				2/1			
SEAS (DIR & FT)	NW 9-11	NW 8-10	NW 7-9	NW 7-9	NW 7-9	NW 7-9	NW 7-9	NW 7-9
ICE ACCRETION	NIL	NIL	NIL	NIL	NIL	NIL	NIL	NIL