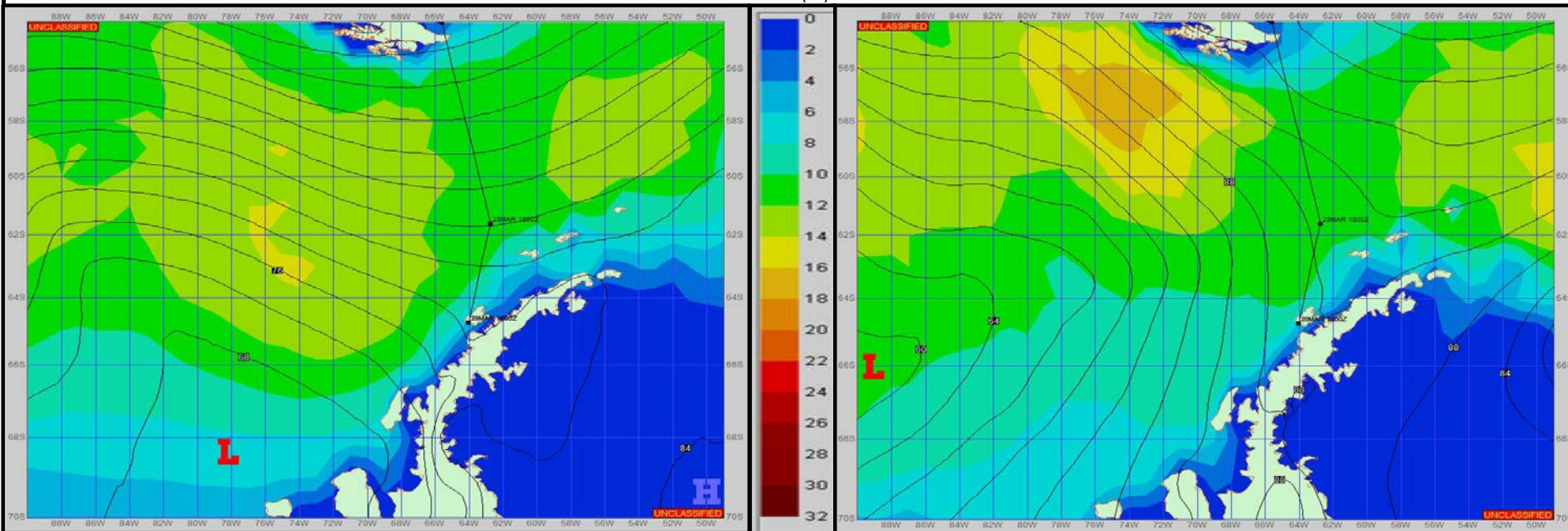


**SURFACE ANALYSIS 30-Mar-2023 18Z**

Seas (FT)

**SURFACE FORECAST 1-Apr-2023 06Z**



**METSIT 21Z 30-Mar** This is my final forecast unless otherwise required until your next scheduled departure. Timely observations received from your ship are greatly appreciated. Outlook for Palmer Station: A low pressure system develops in the Bellingshausen Sea and moves up the west coast of the Antarctic Peninsula today then moves across the terrain and into the Weddell Sea tomorrow. Indications are for strong northwest-north winds with persistent precipitation today and overnight. Expect similar conditions tomorrow as winds shift to west-northwest with gradual improving conditions late in the period. Winds may differ from those forecast due to funneling/sheltering effects of islands.

**FORECASTER NOTES** MCMURDO STATION WINTER OPERATIONS ARE IN EFFECT. WEAX SUPPORT WILL BE DONE BY THE MCMURDO STATION WEATHER OFFICE AND ISSUED BY 2100Z. SEE CONTACT INFO BELOW.

VALID TIME	30-Mar 21Z	31-Mar 06Z	31-Mar 12Z	31-Mar 18Z	1-Apr 00Z	1-Apr 06Z	1-Apr 12Z	1-Apr 18Z
SKY CONDITION	CLOUDY	CLOUDY	CLOUDY	CLOUDY	CLOUDY	CLOUDY	CLOUDY	CLOUDY
WEATHER	SNOW & FOG	SNOW & FOG	SNOW & FOG	MIXED & FOG	MIXED & FOG	MIXED & FOG	MIXED & FOG	MIXED & FOG
VISIBILITY (NM)	1/2 - 1	1/2 - 1	1/2 - 1	1 - 3	1 - 3	1 - 3	1 - 3	1 - 3
SFC WINDS (DIR & KTS)	NW-N 10-20 GUST 30	NW-N 10-20 GUST 30	W-NW 15-25 GUST 30	W-NW 15-25 GUST 30	W-NW 15-25 GUST 30	NW 10-15	NW 10-15	N 10-15
SFC MAX/MIN (°C)	1 / -2				3 / -1			
SST RANGE (°C)	1 / 0				1 / 0			
SEAS (DIR & FT)	W 2-4	W 2-4	W 2-4	NW 4-6	NW 4-6	NW 4-6	NW 4-6	NW 4-6
ICE ACCRETION	LIGHT	LIGHT	LIGHT	LIGHT	LIGHT	LIGHT	LIGHT	LIGHT