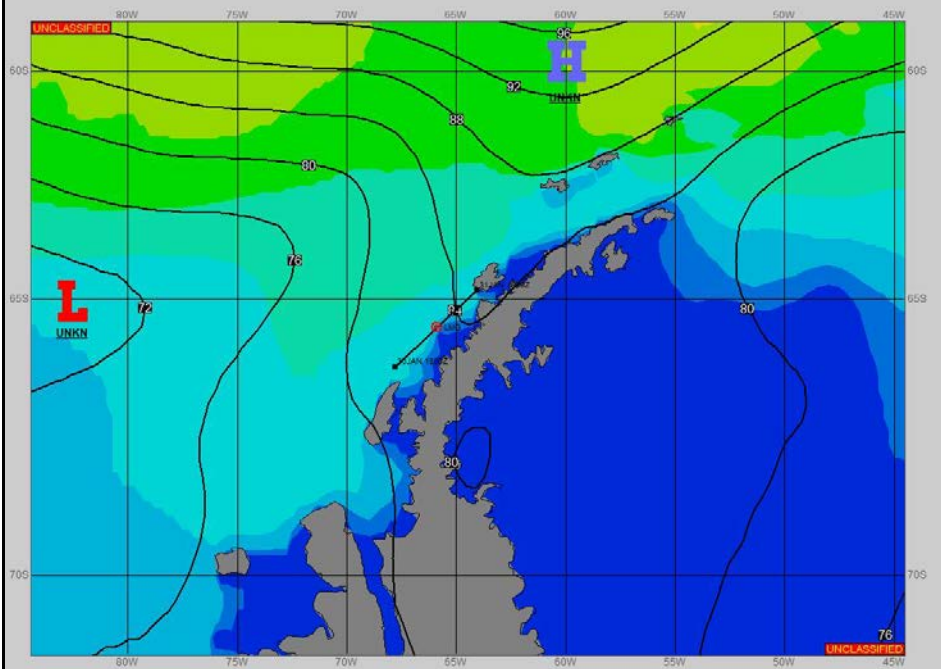
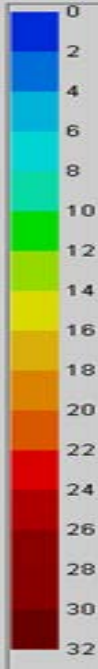


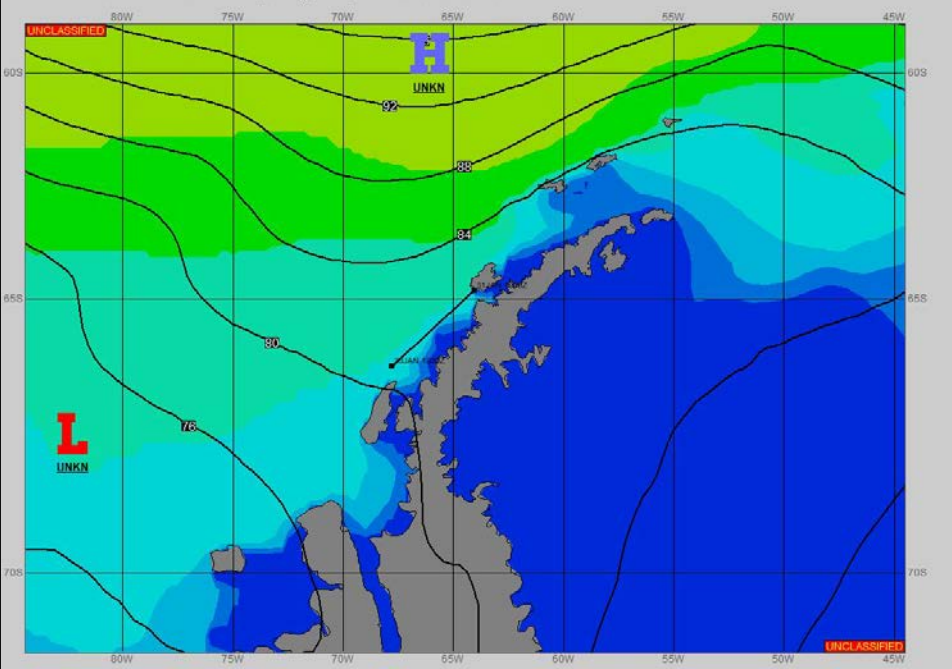
SURFACE ANALYSIS 31-Jan-2023 06Z



Seas (FT)



SURFACE FORECAST 1-Feb-2023 18Z



METSIT 06Z 31-Jan LOW PRESSURE IN THE BELLINGHAUSEN SEA TO MOVE A FRONTAL WAVE ACROSS THE SHIP TRACK AS IT NEARS PALMER STATION. EXPECT WINDS GUSTING TO NEAR 35 KNOTS WITH THE BOUNDARY PASSAGE AND VISIBILITY REDUCED IN RAIN, RAIN/SNOW MIXED, AND FOG.

FORECASTER NOTES WINDS MAY DIFFER FROM THOSE FORECAST DUE TO FUNNELING/SHELTERING EFFECTS OF ISLANDS. THIS WILL BE THE FINAL WEAX FOR THIS PORTION OF THE VOYAGE. PLEASE REFER TO THE PALMER DAILY FORECAST WHILE IN PORT. WE WILL RECOMMENCE WEAX SUPPORT ON RECEIPT OF MOVREP. ENJOY YOUR STAY AT PALMER STATION!

VALID TIME	31-Jan 12Z	31-Jan 18Z	1-Feb 00Z	1-Feb 06Z	1-Feb 12Z	1-Feb 18Z	2-Feb 00Z	2-Feb 06Z
SKY CONDITION	CLOUDY	CLOUDY						
WEATHER	NONE	MIXED & FOG	PALMER STATION		PALMER STATION		PALMER STATION	
VISIBILITY (NM)	UNRESTRICTED	1 - 3						
SFC WINDS (DIR & KTS)	NE 15-20	NE 20-25 GUST 35						
SFC MAX/MIN (°C)	4/1							
SST RANGE (°C)	2/1							
SEAS (DIR & FT)	NW 6-8	NW 3-5						
ICE ACCRETION	NIL	NIL						