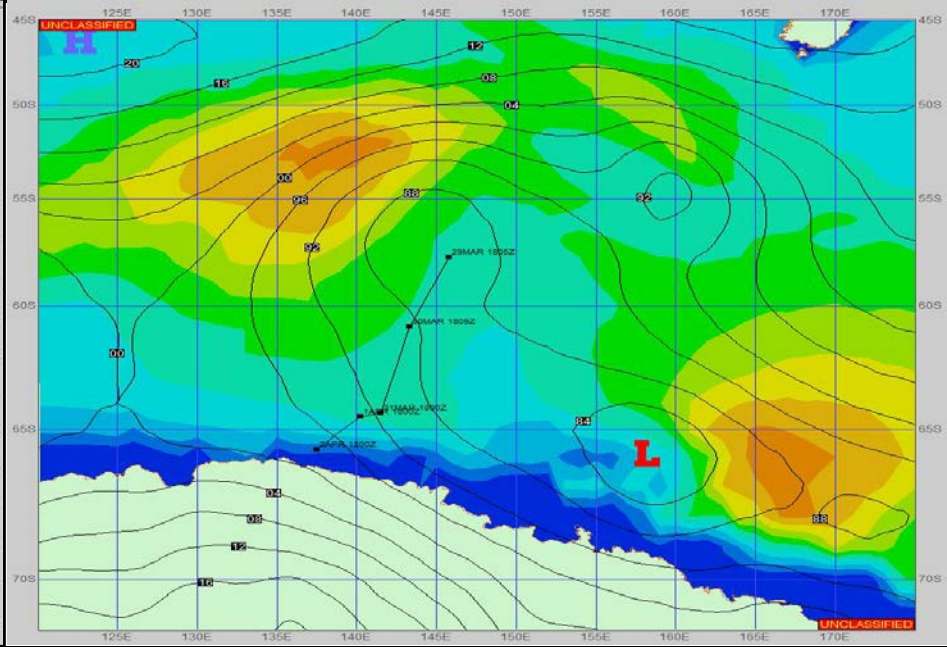
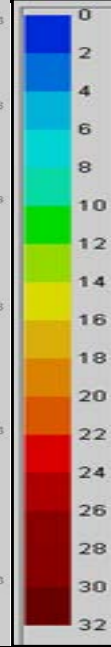
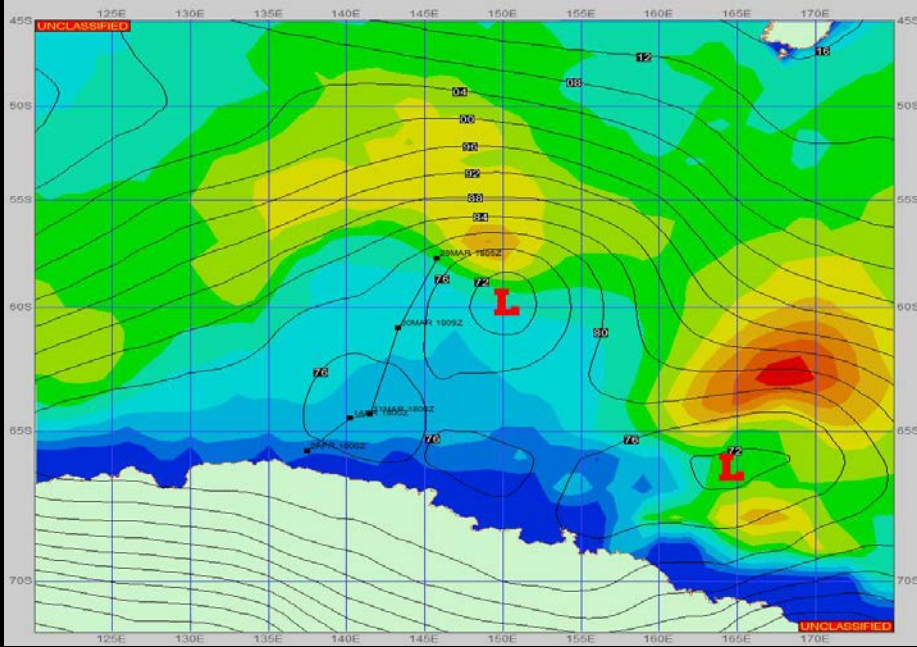


SURFACE ANALYSIS 2-Apr-2023 18Z

Seas (FT)

SURFACE FORECAST 4-Apr-2023 06Z



METSIT 21Z 2-Apr A series of weak low pressure systems will transit from west to east during this forecast period, with a few dipping south past Cape Adair. With these transiting lows, winds will most likely switch directions multiple times. However, while in and around the science area, you can expect generally calm conditions. Sea states tend to remain out of the north and you'll see partly to mostly cloudy skies.

FORECASTER NOTES MCMURDO STATION WINTER OPERATIONS ARE IN EFFECT. WEAX SUPPORT WILL BE DONE BY THE MCMURDO STATION WEATHER OFFICE AND ISSUED BY 2100Z. SEE CONTACT INFO BELOW.

VALID TIME	2-Apr 21Z	3-Apr 06Z	3-Apr 12Z	3-Apr 18Z	4-Apr 00Z	4-Apr 06Z	4-Apr 12Z	4-Apr 18Z
SKY CONDITION	CLOUDY	MOSTLY CLOUDY	MOSTLY CLOUDY	MOSTLY CLOUDY	MOSTLY CLOUDY	PARTLY CLOUDY	PARTLY CLOUDY	PARTLY CLOUDY
WEATHER	RAIN	NONE	NONE	NONE	NONE	NONE	NONE	NONE
VISIBILITY (NM)	UNRESTRICTED	4 - 6	3 - 5	4 - 6	3 - 5	4 - 6	UNRESTRICTED	UNRESTRICTED
SFC WINDS (DIR & KTS)	SE-SW 10-15	E-SE 10-15	E 8-12	SE 8-12	SE 10-15	SE 10-15	SE-SW 10-15	SW 8-12
SFC MAX/MIN (°C)	0 / -2				-1 / -3			
SST RANGE (°C)	1 / 0				0 / -1			
SEAS (DIR & FT)	NE 2-4	NE 2-4	NNE 2-4	NNE 2-4	NW 2-4	NW 2-4	NW 2-4	NW 2-4
ICE ACCRETION	NIL	NIL	LIGHT	LIGHT	LIGHT	LIGHT	NIL	NIL

