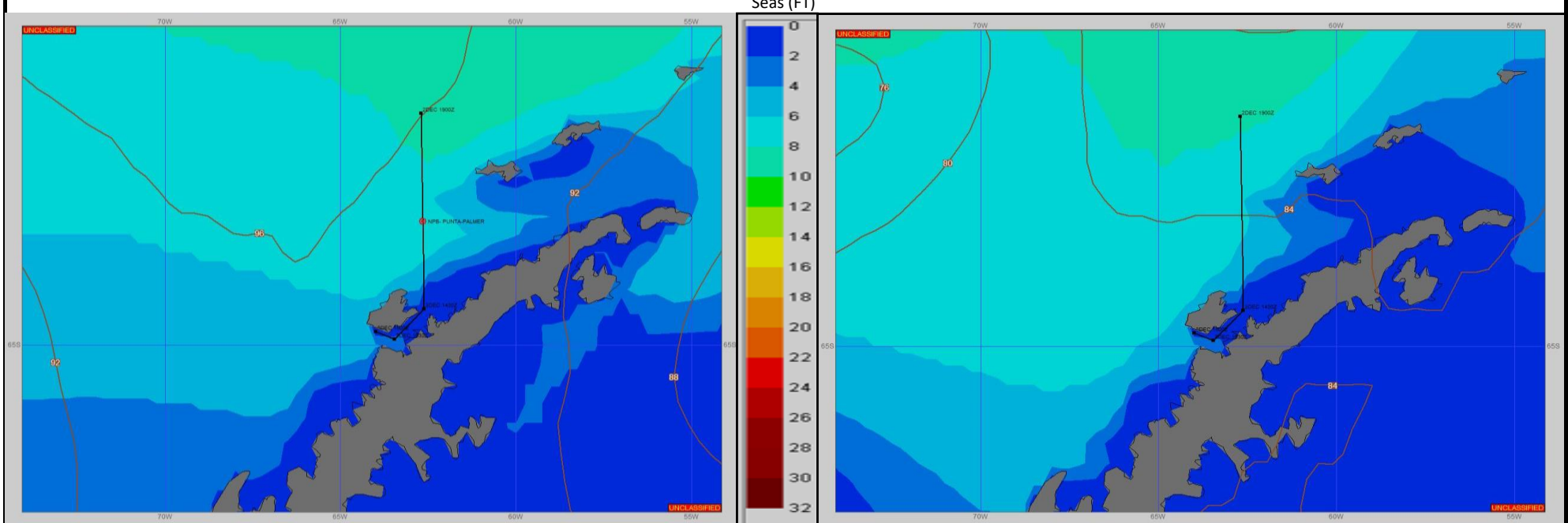


SURFACE ANALYSIS 3-Dec-2023 06Z

SURFACE FORECAST 4-Dec-2023 18Z



METSIT 06Z 3-Dec A LOW PRESSURE SYSTEM OVER THE BELLINGSHAUSEN SEA EXTENDS A BROAD TROUGH OVER THE DRAKE PASSAGE AND ALONG THE ANTARCTIC PENINSULA PRODUCING EXTENSIVE CLOUD COVER FOR THE AREA. A LIGHT BREEZE AND FOGGY CONDITIONS ARE EXPECTED FOR THE REMAINDER OF THIS TRASIT.

FORECASTER NOTES Winds may differ from those forecast due to funneling/sheltering effects of islands. This is my final forecast unless otherwise required. Timely observations received from your ship greatly appreciated. Outlook for arrival at your destination: See palmer daily forecast.

VALID TIME	3-Dec 12Z	3-Dec 18Z	4-Dec 00Z	4-Dec 06Z	4-Dec 12Z	4-Dec 18Z	5-Dec 00Z	5-Dec 06Z
SKY CONDITION	MOSTLY CLOUDY	CLOUDY						
WEATHER	FOG	FOG	PALMER STATION	PALMER STATION	PALMER STATION	PALMER STATION	PALMER STATION	PALMER STATION
VISIBILITY (NM)	<1/2	1/2 - 1						
SFC WINDS (DIR & KTS)	SW 5-10	VRB 2-7						
SFC MAX/MIN (°C)	-2/-2							
SST RANGE (°C)	0/0							
SEAS (DIR & FT)	W 1-3	W 0-2, <1 IP						
ICE ACCRETION	NIL	NIL						