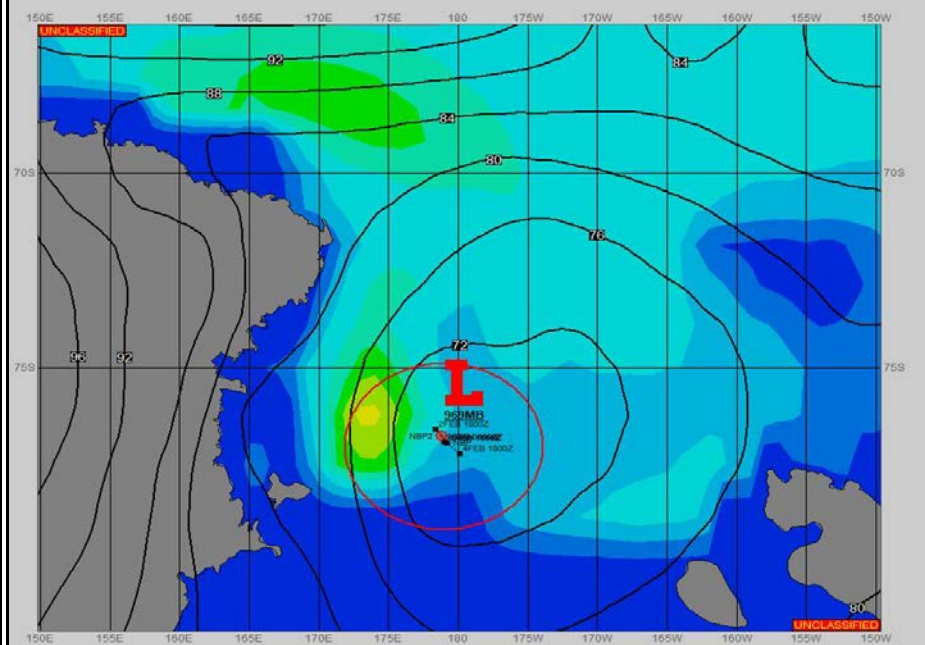
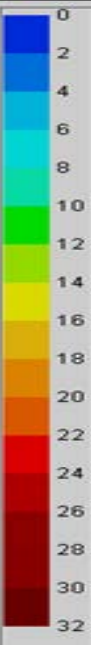


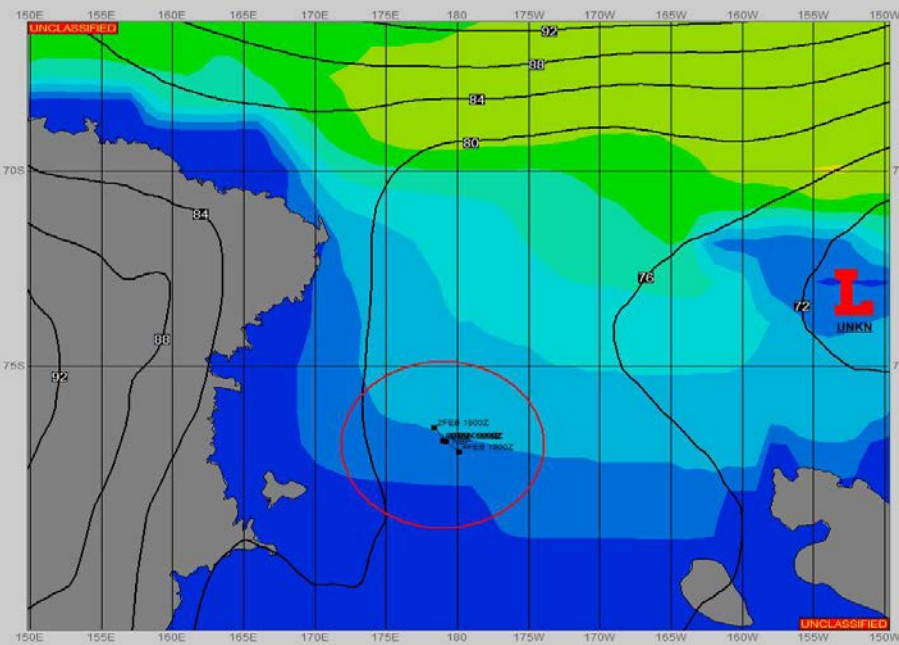
SURFACE ANALYSIS 3-Feb-2023 06Z



Seas (FT)



SURFACE FORECAST 4-Feb-2023 18Z



METSIT 06Z 3-Feb 969MB LOW PRESSURE CENTERED NEAR 76S 180 WILL DEEPEN TO 967MB THROUGH 04/0000Z SLOWLY MOVING EAST-NORTHEAST. EXPECT PERIODS OF REDUCED VISIBILITY THROUGH APPROXIMATELY 04/0600Z WITH INCREASED SOUTHEAST WINDS AS THE TIGHTENED PRESSURE GRADIENT ON THE WEST PORTION OF THE LOW MOVES EAST ACROSS THE FORECAST SHIP POSITION. VISIBILITY WILL IMPROVE AND WINDS WILL DECREASE FROM 04/0600Z AS THE PRESSURE GRADIENT LOOSENS WITH THE LOW MOVING NORTHEAST.

FORECASTER NOTES

| VALID TIME | 3-Feb 12Z | 3-Feb 18Z | 4-Feb 00Z | 4-Feb 06Z | 4-Feb 12Z | 4-Feb 18Z | 5-Feb 00Z | 5-Feb 06Z |
|-----------------------|------------|---------------|---------------------|---------------------|--------------|---------------|--------------|--------------|
| SKY CONDITION | CLOUDY | MOSTLY CLOUDY | CLOUDY | CLOUDY | CLOUDY | MOSTLY CLOUDY | CLOUDY | CLOUDY |
| WEATHER | SNOW & FOG | NONE | SNOW & FOG | SNOW & FOG | NONE | NONE | NONE | NONE |
| VISIBILITY (NM) | 2 - 4 | UNRESTRICTED | 1/2 - 1 | 1 - 3 | UNRESTRICTED | UNRESTRICTED | UNRESTRICTED | UNRESTRICTED |
| SFC WINDS (DIR & KTS) | SE 10-15 | SE 15-20 | SE 15-20 GUST 30 | SE 15-20 GUST 25 | SE 10-15 | SE 5-10 | SE 5-10 | SW 5 |
| SFC MAX/MIN (°C) | -1/-3 | | | | -2/-4 | | | |
| SST RANGE (°C) | 0/-1 | | | | 0/-1 | | | |
| SEAS (DIR & FT) | W 6-8 | W 5-7 | S 5-7 | SE 5-7 | SE 4-6 | E 3-5 | NE 2-4 | NE 2-4 |
| ICE ACCRETION | LIGHT | LIGHT | LIGHT | LIGHT | LIGHT | LIGHT | LIGHT | LIGHT |