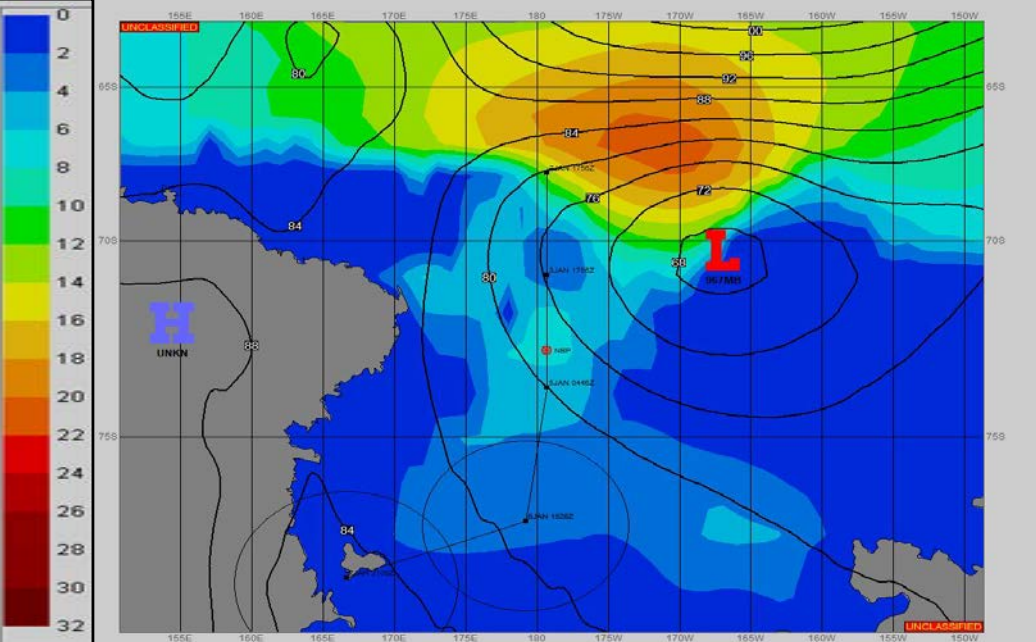
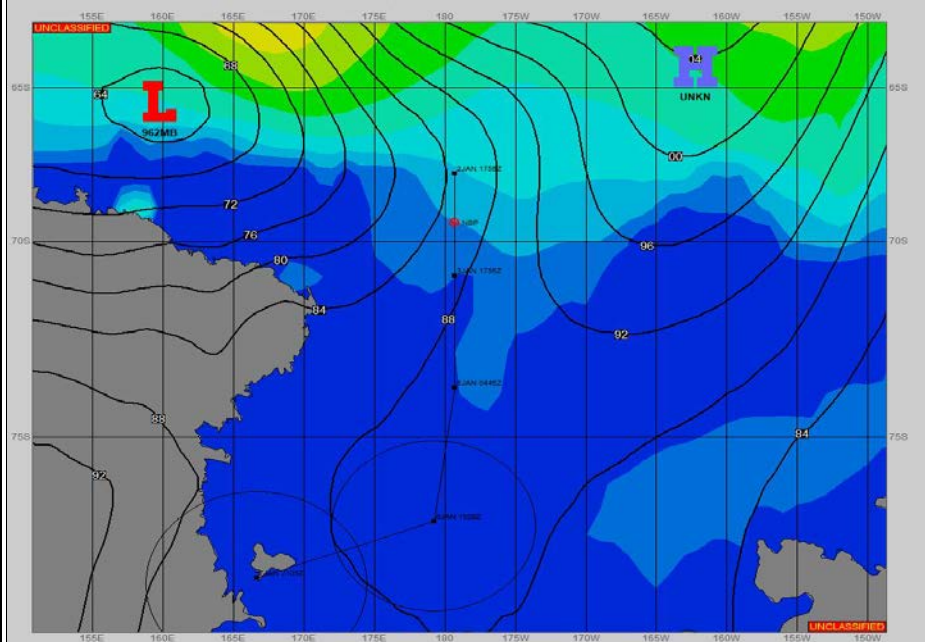


**SURFACE ANALYSIS 3-Jan-2023 06Z**

Seas (FT)

**SURFACE FORECAST 4-Jan-2023 18Z**



**METSIT 06Z 3-Jan** 962MB LOW NEAR 66S 160E WILL DEEPEN TO 954MB BY 03/1800Z, THEN START TO FILL AS IT MOVES SOUTHEAST ALONG WILKES COAST THROUGH APPROXIMATELY 04/0000Z. FROM 04/0000Z, THE LOW WILL FILL TO 967MB AS IT TRACKS EAST FROM THE COAST ALONG 70S TO NEAR 71S 167W. THE SHIP POSITION WILL LIKELY HAVE VISIBILITY REDUCED TO NEAR 1 MILE IN SNOW/MIXED PRECIPITATION WITH WIND SPEEDS GUSTING NEAR 35 KNOTS COMMENCING THIS FORECAST AS LOW PRESSURE APPROACHES FROM THE NORTHWEST. WINDS SPEEDS SHOULD DIMINISH WITH VARIABLE CLOUDS AND VISIBILITY FROM 04/0000Z THROUGH APPROXIMATELY 04/0900Z AS THE LOW TRACKS EAST NEAR 70S NORTH OF FORECAST SHIP POSITION. EXPECT GUSTY WINDS AND HIGHER SEAS FROM THE SOUTHEAST FROM APPROXIMATELY 04/1200Z AS THE LOW PRESSURE CONTINUES EAST.

**FORECASTER NOTES**

VALID TIME	3-Jan 12Z	3-Jan 18Z	4-Jan 00Z	4-Jan 06Z	4-Jan 12Z	4-Jan 18Z	5-Jan 00Z	5-Jan 06Z
SKY CONDITION	CLOUDY	CLOUDY	MOSTLY CLOUDY	CLOUDY	CLOUDY	CLOUDY	MOSTLY CLOUDY	CLOUDY
WEATHER	MIXED & FOG	MIXED & FOG	MIXED & FOG	MIXED & FOG	SNOW & FOG	NONE	NONE	NONE
VISIBILITY (NM)	1/2 - 1	1/2 - 1	2 - 4	2 - 4	3 - 5	UNRESTRICTED	UNRESTRICTED	UNRESTRICTED
SFC WINDS (DIR & KTS)	NE 25-30 GUST 35	NE 15-20 GUST 30	N 10-20	NE 5-10	SE 20-25 GUST 35	SE 20-25 GUST 35	SE 15-20	SE 15-20
SFC MAX/MIN (°C)	1/-1				1/-2			
SST RANGE (°C)	0/-2				0/-1			
SEAS (DIR & FT)	N 3-5	NE 2-4	N 2-4	SE 2-4	SE 5-7	SE 5-7	SE 3-5	SE 2-4
ICE ACCRETION	NIL	NIL	NIL	NIL	NIL	NIL	LIGHT	LIGHT