

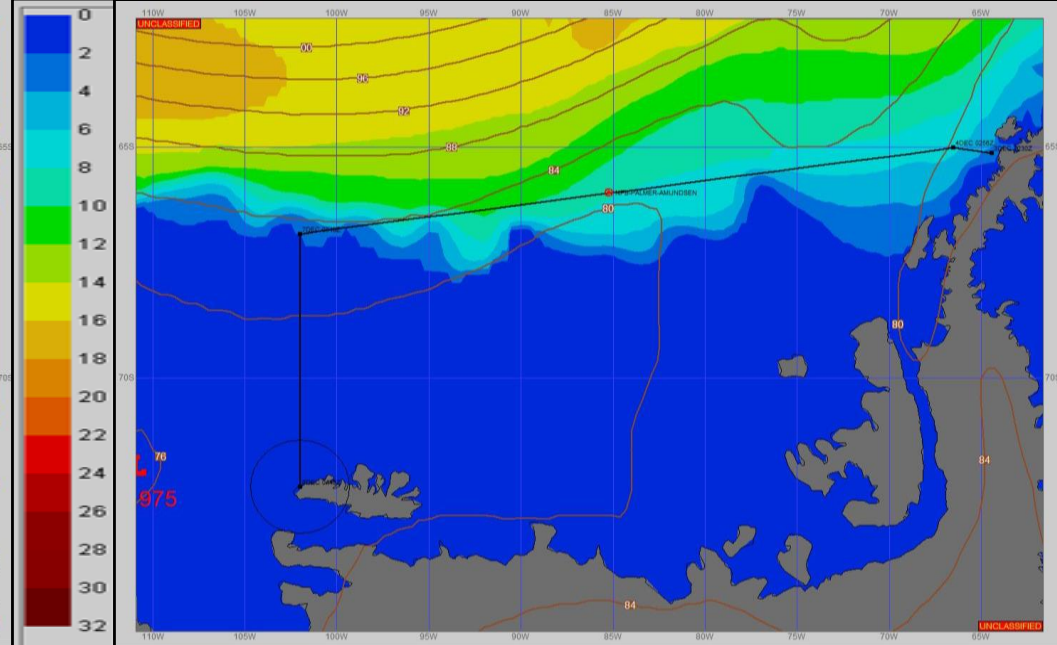
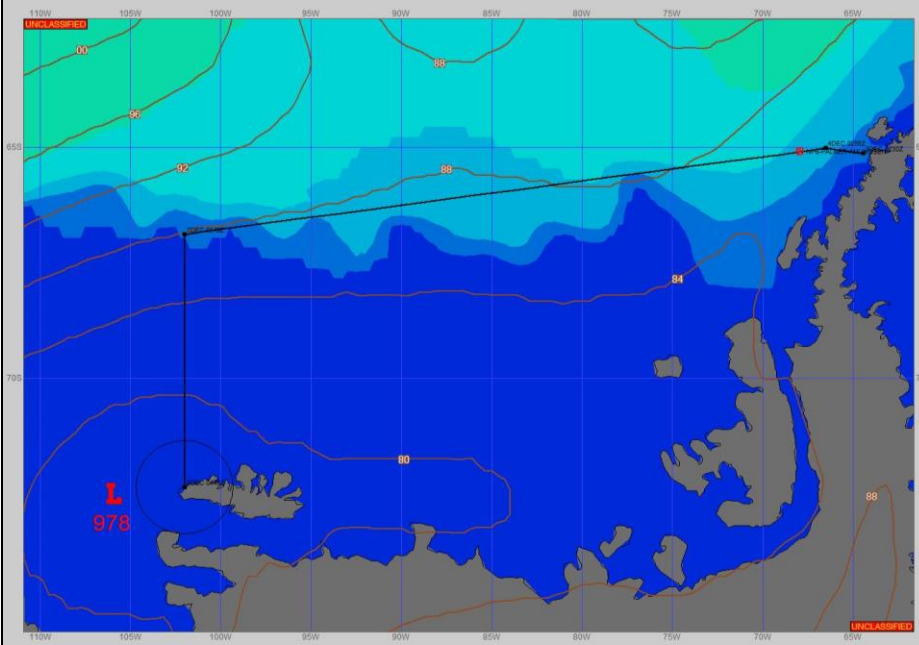
Ref A: MOVREP 03 DEC 2023

Ref B:

**SURFACE ANALYSIS 4-Dec-2023 06Z**

Seas (FT)

**SURFACE FORECAST 5-Dec-2023 18Z**



**METSIT 06Z 4-Dec** A LOW PRESSURE SYSTEM OVER THE BELLINGSHAUSEN SEA IS PRODUCING EXTENSIVE CLOUD COVER FOR THE AREA. A LIGHT TO GENTLE BREEZE WITH SLIGHT TO MODERATE SEAS AND FOGGY CONDITIONS ARE EXPECTED FOR TODAY.

**FORECASTER NOTES**

VALID TIME	4-Dec 12Z	4-Dec 18Z	5-Dec 00Z	5-Dec 06Z	5-Dec 12Z	5-Dec 18Z	6-Dec 00Z	6-Dec 06Z
SKY CONDITION	CLOUDY	CLOUDY	MOSTLY CLOUDY	CLOUDY	CLOUDY	CLOUDY	MOSTLY CLOUDY	CLOUDY
WEATHER	FOG	FOG	FOG	FOG	FOG	RAIN & FOG	FOG	FOG
VISIBILITY (NM)	<1/2	1/2 - 1	<1/2	1/2 - 1	<1/2	<1/2	<1/2	<1/2
SFC WINDS (DIR & KTS)	W 5-10	WSW 5-10	WSW 10-15	WSW 15-20	WNW 10-15	W 15-20	W 15-20	W 10-15
SFC MAX/MIN (°C)	-2/-2							
SST RANGE (°C)	0/0							
SEAS (DIR & FT)	W 4-6	W 3-5	W 2-4	W 5-7	W 6-8	W 7-9	WNW 7-10	WNW 7-10
ICE ACCRETION	LIGHT	LIGHT	LIGHT	LIGHT	LIGHT	LIGHT	LIGHT	LIGHT