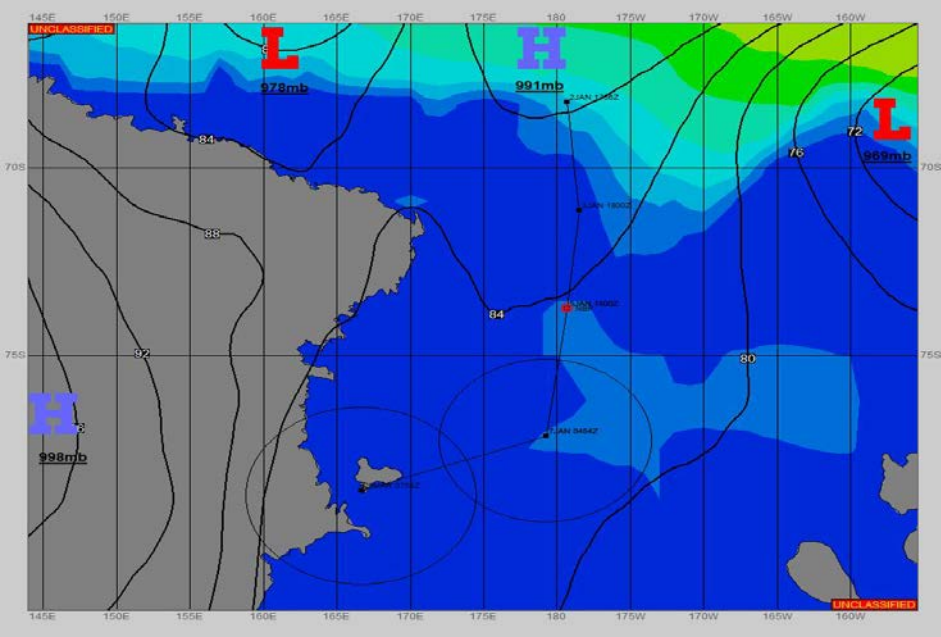
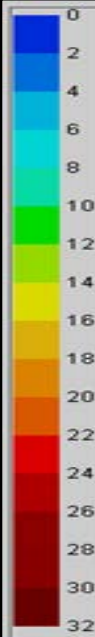
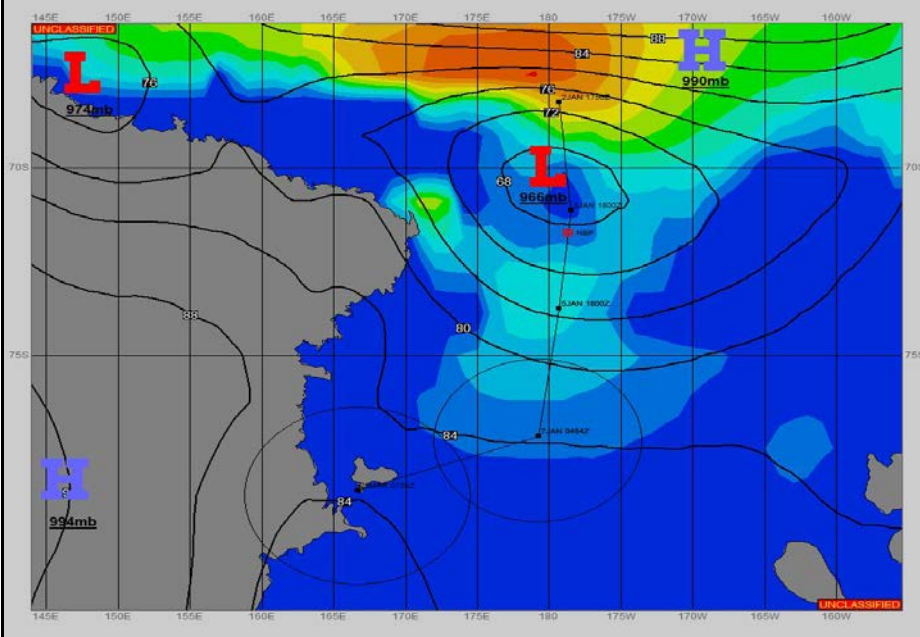


SURFACE ANALYSIS 4-Jan-2023 06Z

Seas (FT)

SURFACE FORECAST 5-Jan-2023 18Z



METSIT 06Z 4-Jan LOW PRESSURE IN THE NORTHERN ROSS SEA PUSHES FURTHER EAST. AS IT MOVES FURTHER AWAY FROM YOUR POSITION, WINDS WILL SLOWLY DIMINISH INTO TOMORROW, ALONG WITH DECREASING WAVE HEIGHTS. CLOUDS, SNOW, AND FOG WILL BE PRESENT THROUGH THE PERIOD, WITH VISIBILITY VARYING DRASTICALLY AT TIMES.

FORECASTER NOTES

VALID TIME	4-Jan 12Z	4-Jan 18Z	5-Jan 00Z	5-Jan 06Z	5-Jan 12Z	5-Jan 18Z	6-Jan 00Z	6-Jan 06Z
SKY CONDITION	CLOUDY	CLOUDY	CLOUDY	MOSTLY CLOUDY	PARTLY CLOUDY	MOSTLY CLOUDY	PARTLY CLOUDY	PARTLY CLOUDY
WEATHER	SNOW & FOG	SNOW & FOG	SNOW & FOG	SNOW & FOG	SNOW	SNOW	SNOW & FOG	FOG
VISIBILITY (NM)	<1/2	<1/2	1/2 - 1	1/2 - 1	UNRESTRICTED	UNRESTRICTED	1 - 3	1/2 - 1
SFC WINDS (DIR & KTS)	SE 15-20 GUST 30	SE 15-20 GUST 30	SE 10-15 GUST 20	SE 10-15	S 5-10	0-5	NW 5-10	N 5-10
SFC MAX/MIN (°C)	0 / -3				-1 / -3			
SST RANGE (°C)	0 / -2				1 / -1			
SEAS (DIR & FT)	NW 4-6	NW 4-6	NW 4-6	NW 2-4	NW 2-4	NW 2-4	NW 1-3	NW 1-3
ICE ACCRETION	LIGHT	LIGHT	LIGHT	LIGHT	NIL	NIL	NIL	NIL