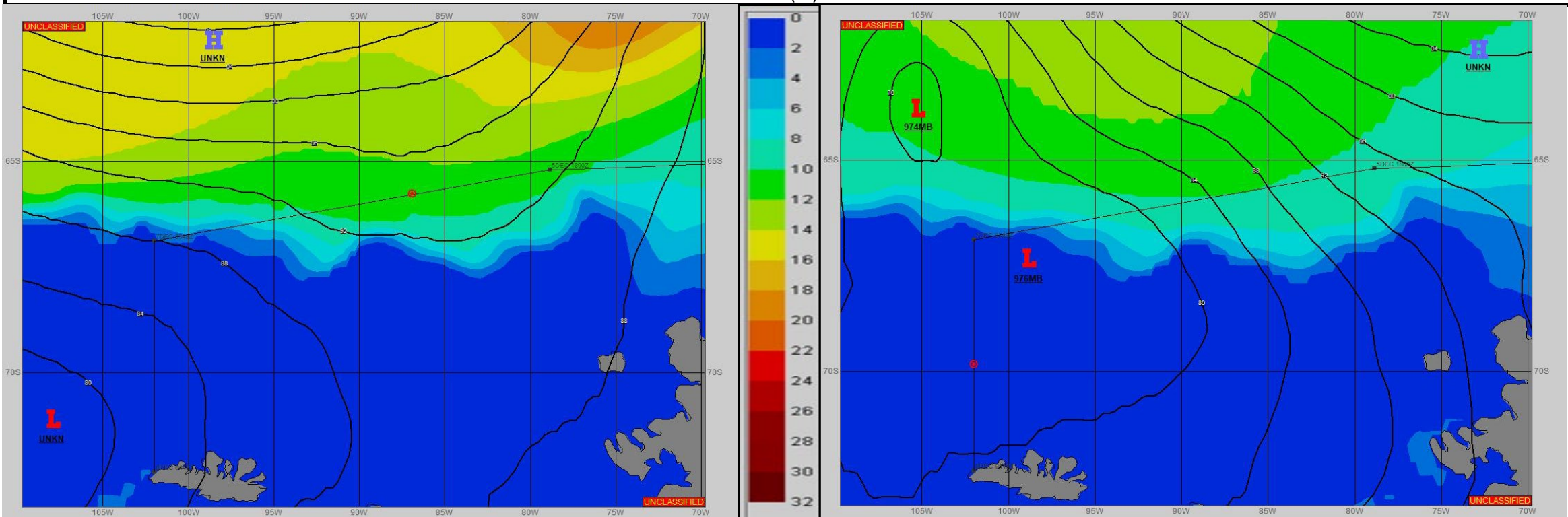


**SURFACE ANALYSIS 6-Dec-2023 06Z**

**SURFACE FORECAST 7-Dec-2023 18Z**



**METSIT 06Z 6-Dec** NORTHWEST PRESSURE GRADIENT WILL EASE AS HIGH PRESSURE IN THE SOUTH PACIFIC MOVES EAST ALLOWING LOW PRESSURE FROM THE AMUNDSEN SEA TO MOVE EAST AND DEEPEN INTO THE BELLINGSHAUSEN SEA. EXPECT CLOUDY SKIES AND CONTINUED PERIODS OF REDUCED VISIBILITY IN FOG.

**FORECASTER NOTES**

VALID TIME	6-Dec 12Z	6-Dec 18Z	7-Dec 00Z	7-Dec 06Z	7-Dec 12Z	7-Dec 18Z	8-Dec 00Z	8-Dec 06Z
SKY CONDITION	CLOUDY	CLOUDY	CLOUDY	CLOUDY	CLOUDY	CLOUDY	CLOUDY	MOSTLY CLOUDY
WEATHER	FOG	FOG	FOG	FOG	FOG	FOG	FOG	NONE
VISIBILITY (NM)	1 - 3	1 - 3	1 - 3	1 - 3	2-4	3 - 5	3 - 5	UNRESTRICTED
SFC WINDS (DIR & KTS)	WNW 15-20	NW 20-25	NW 15-20	NW 5-10	NE 5	SE 5-10	SE 5-10	S 10-15
SFC MAX/MIN (°C)	0/-1				0/-4			
SST RANGE (°C)	0/-2				-1/-2			
SEAS (DIR & FT)	NW 8-10	NW 8-10	NW 3-5	N 0-1	N 0-1	N 0-1	N 0-1	N 0-1
ICE ACCRETION	NIL	NIL	NIL	NIL	NIL	NIL	NIL	LIGHT