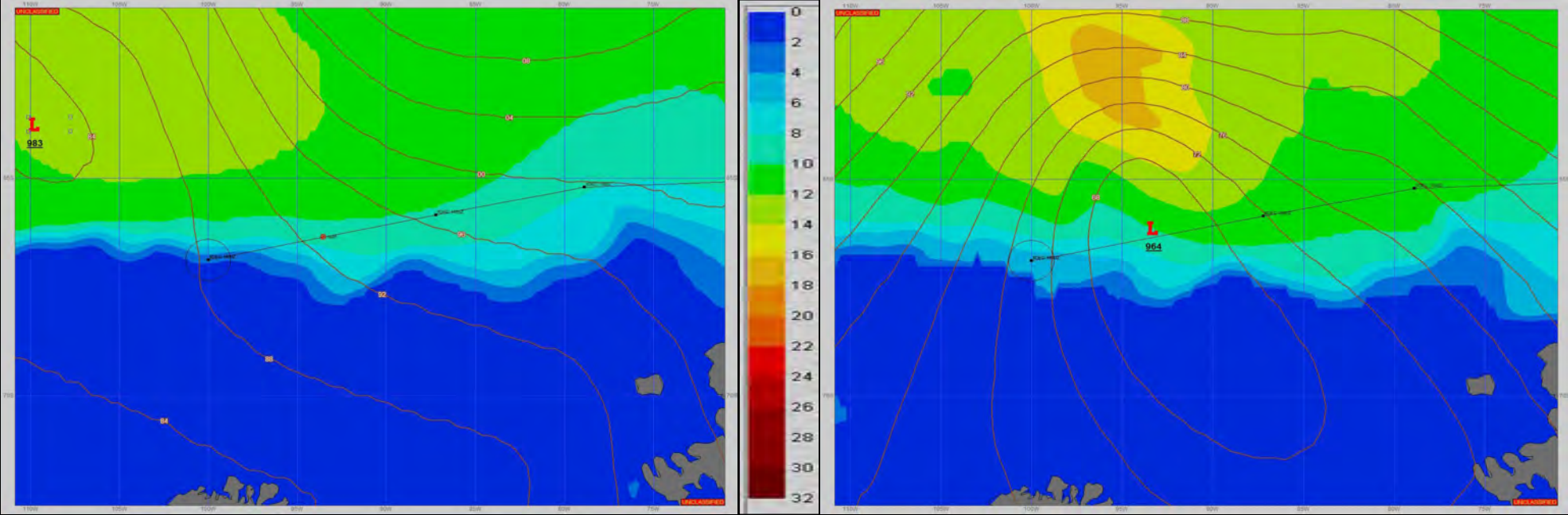


SURFACE ANALYSIS 7-Dec-2023 06Z

Seas (FT)

SURFACE FORECAST 8-Dec-2023 18Z



METSIT 06Z 7-Dec LOW PRESSURE AT 983MB DEEPENS AS IT MOVES TOWARDS THE BELLINGSHAUSEN SEA. EXPECT CLOUDY SKIES, STEADILY INCREASING WINDS, AND CONTINUED PERIODS OF REDUCED VISIBILITY IN FOG AND MIXED PRECIPITATION.

FORECASTER NOTES FORECAST AFT 07/18Z IS FOR THE LAST WAYPOINT(MODLOC L) PROVIDED TO CHARLESTON ROF.

VALID TIME	7-Dec 12Z	7-Dec 18Z	8-Dec 00Z	8-Dec 06Z	8-Dec 12Z	8-Dec 18Z	9-Dec 00Z	9-Dec 06Z
SKY CONDITION	CLOUDY	CLOUDY	CLOUDY	CLOUDY	CLOUDY	CLOUDY	MOSTLY CLOUDY	PARTLY CLOUDY
WEATHER	MIXED & FOG	MIXED & FOG	FOG	MIXED & FOG	MIXED & FOG	MIXED & FOG	FOG	NONE
VISIBILITY (NM)	<1/2	<1/2	1/2 - 1	1/2 - 1	1 - 3	2 - 4	2 - 4	UNRESTRICTED
SFC WINDS (DIR & KTS)	NNW 15-20	W 5-10	VRB 05-10	SE 15-20	S 20-30 GUST 40	SW 20-30 GUST 40	SW 15-20 GUST 30	SW 15-20 GUST 30
SFC MAX/MIN (°C)	0/-1				0/-3			
SST RANGE (°C)	-1/-2				-1/-2			
SEAS (DIR & FT)	NW 4-6	NNW 2-4	NNW 2-4	N 3-5	SW 4-6	SW 4-6	WSW 3-5	WSW 3-5
ICE ACCRETION	NIL	NIL	NIL	NIL	NIL	NIL	NIL	LIGHT