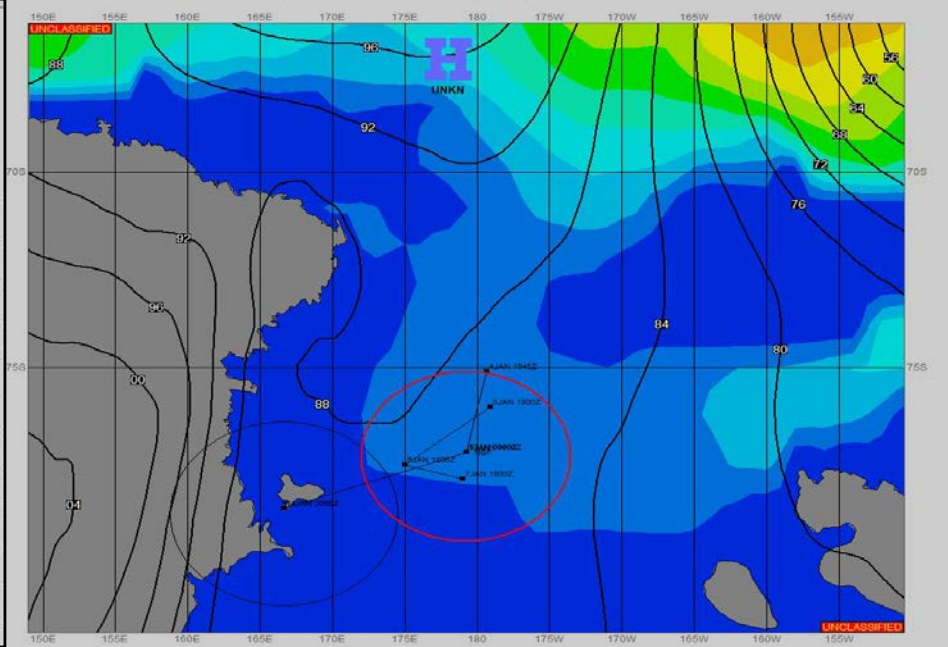
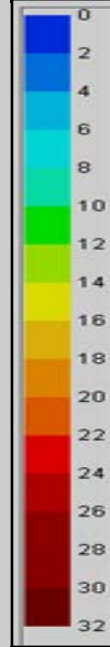
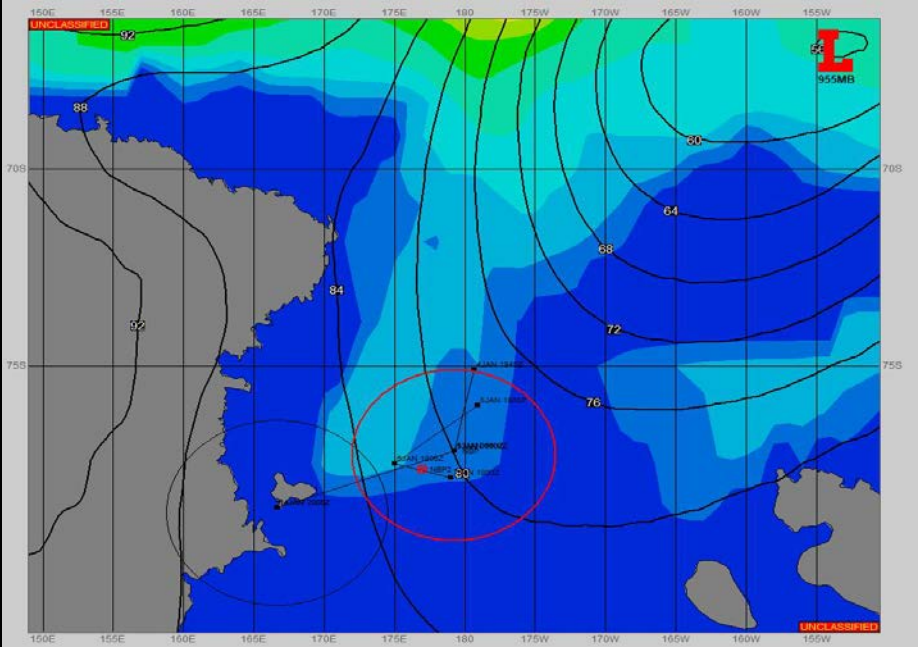


SURFACE ANALYSIS 7-Jan-2023 06Z

Seas (FT)

SURFACE FORECAST 8-Jan-2023 18Z



METSIT 06Z 7-Jan LOW PRESSURE NEAR 66S 153W WILL CONTINUE MOVING EAST, EASING THE PRESSURE GRADIENT EXTENDING SOUTH INTO THE ROSS SEA. EXTENSIVE CLOUD COVER ON THE ROSS ICE SHELF WILL CONTINUE TO LIFT NORTH INTO THE OPERATING AREA UNTIL LATER IN THE FORECAST PERIOD WHEN DRY, OFF-CONTINENT FLOW STARTS A CLEARING TREND.

FORECASTER NOTES

VALID TIME	7-Jan 12Z	7-Jan 18Z	8-Jan 00Z	8-Jan 06Z	8-Jan 12Z	8-Jan 18Z	9-Jan 00Z	9-Jan 06Z
SKY CONDITION	CLOUDY	CLOUDY	CLOUDY	CLOUDY	CLOUDY	PARTLY CLOUDY	PARTLY CLOUDY	PARTLY CLOUDY
WEATHER	NONE	NONE	NONE	NONE	NONE	NONE	NONE	NONE
VISIBILITY (NM)	UNRESTRICTED	UNRESTRICTED	UNRESTRICTED	UNRESTRICTED	UNRESTRICTED	UNRESTRICTED	UNRESTRICTED	UNRESTRICTED
SFC WINDS (DIR & KTS)	SE 15-20 GUST 25	SE 15-20	S 15-20	SW 15-20	SW 15-20	SW 15-20	SW 10-15	SW 10-15
SFC MAX/MIN (°C)	-2/-5				-4/-7			
SST RANGE (°C)	1/-1				1/-1			
SEAS (DIR & FT)	S 2-4	S 1-3	SE 1-3	SE 1-3	E 2-4	SE 2-4	SE 2-4	ESE 2-4
ICE ACCRETION	LIGHT	LIGHT	LIGHT	LIGHT	LIGHT	LIGHT	LIGHT	LIGHT