

SURFACE ANALYSIS

8-Dec-2023

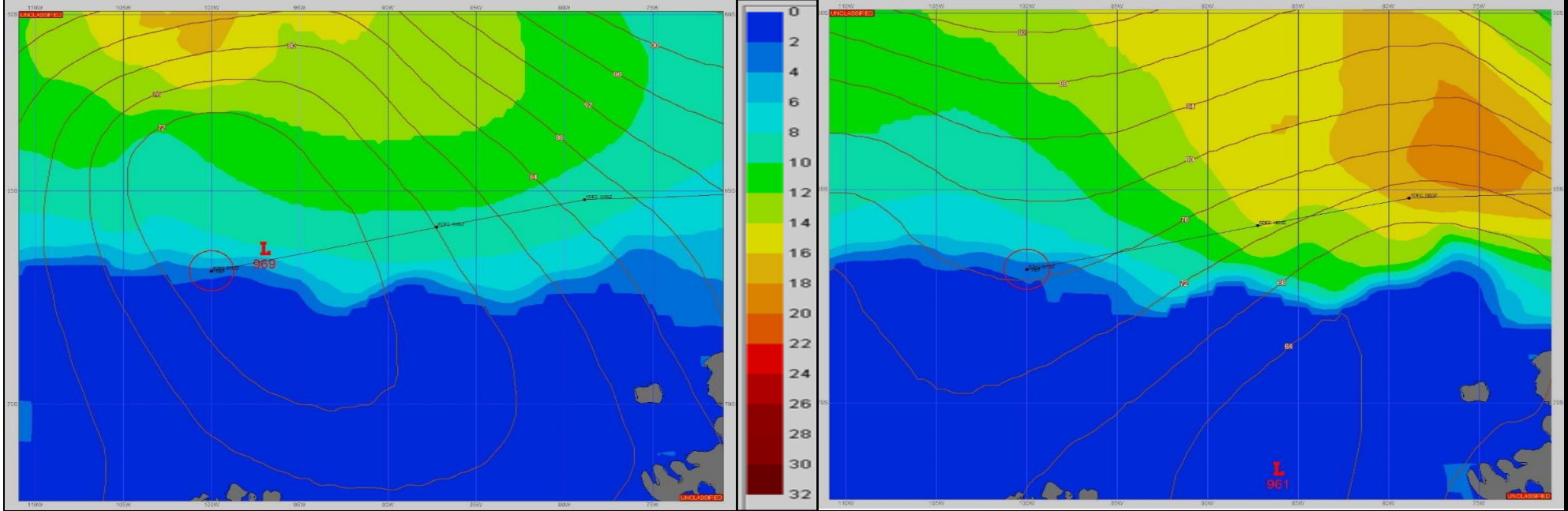
06Z

Seas (FT)

SURFACE FORECAST

9-Dec-2023

18Z



METSIT 06Z 8-Dec LOW PRESSURE AT 969MB DEEPENS AS IT MOVES TOWARDS THE BELLINGSHAUSEN SEA. EXPECT CLOUDY SKIES, A STRONG BREEZE AND MODERATE SEAS WITH CONTINUED PERIODS OF REDUCED VISIBILITY IN FOG AND OCCASIONAL MIXED PRECIPITATION.

FORECASTER NOTES FORECAST IS FOR THE LAST WAYPOINT(MODLOC L) PROVIDED TO CHARLESTON ROF. PLEASE PROVIDE AN UPDATED ROVREP FOR DEARTURE FROM MODLOC AREA.

VALID TIME	8-Dec 12Z	8-Dec 18Z	9-Dec 00Z	9-Dec 06Z	9-Dec 12Z	9-Dec 18Z	10-Dec 00Z	10-Dec 06Z
SKY CONDITION	CLOUDY	CLOUDY	MOSTLY CLOUDY	CLOUDY	MOSTLY CLOUDY	MOSTLY CLOUDY	CLOUDY	CLOUDY
WEATHER	MIXED & FOG	FOG	FOG	FOG	FOG	FOG	FOG	FOG
VISIBILITY (NM)	<1/2	1/2 - 1	1 - 3	1/2 - 1	1 - 3	1 - 3	<1/2	<1/2
SFC WINDS (DIR & KTS)	W 20-25	SW 20-25	SW20-25	WSW 15-20	SW15-20	W 10-15	NW 10-15	NNW 5-10
SFC MAX/MIN (°C)	-1/-2				-4/-1			
SST RANGE (°C)	0/-2				-2/-2			
SEAS (DIR & FT)	SW 2-4	SW 3-5	SW 3-5	WSW 2-4	W 1-3	WNW 1-3	WNW 1-3	WNW 1-3
ICE ACCRETION	LIGHT	LIGHT	LIGHT	LIGHT	LIGHT	LIGHT	LIGHT	LIGHT