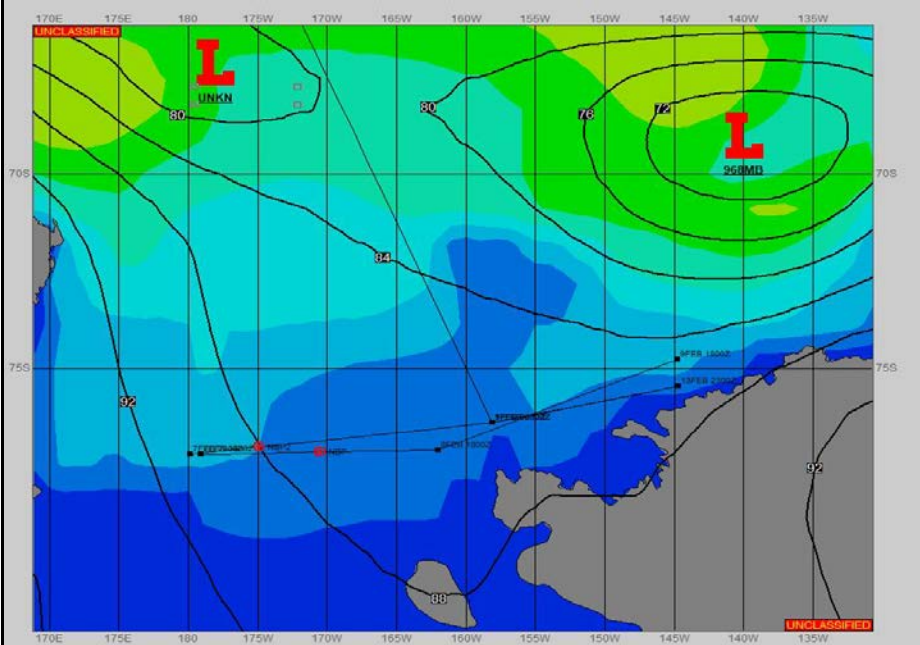
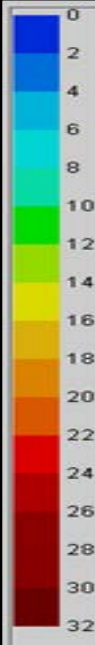


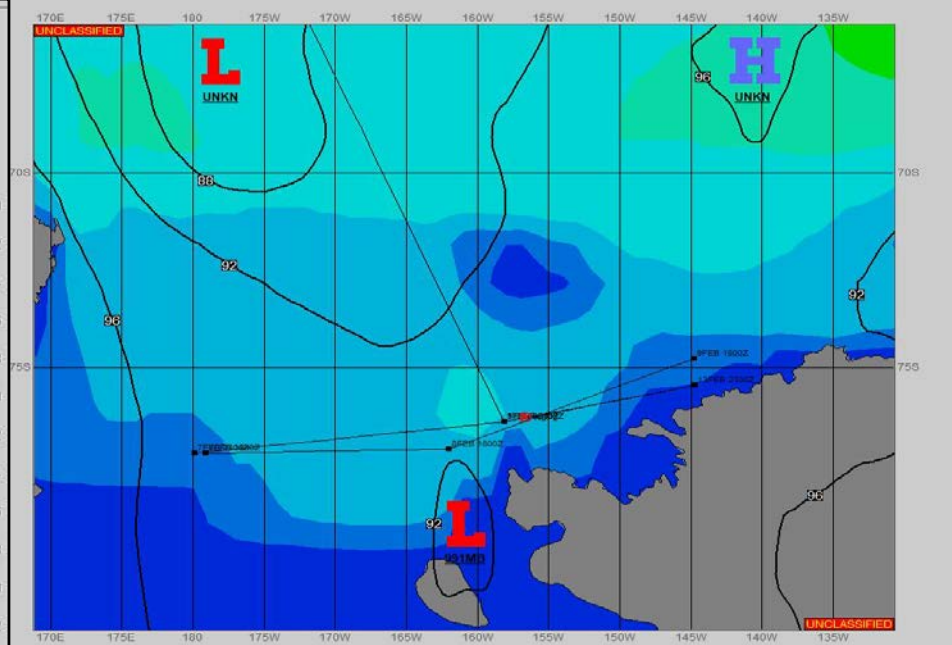
**SURFACE ANALYSIS 8-Feb-2023 06Z**



Seas (FT)



**SURFACE FORECAST 9-Feb-2023 18Z**



**METSIT 06Z 8-Feb** PRESSURE GRADIENT TO REMAIN RELATIVELY WEAK THROUGH THE FORECAST PERIOD. EXPECT VARIABLE CLOUD COVER AND GENERALLY GOOD VISIBILITY.

**FORECASTER NOTES** OVER 10 LON. DEGREE DISPARITY BETWEEN MOVREP PLOT (NBP2) AND SITREP COORDINATE PLOT (NBP) AT 09/1800Z. USED THE SITREP COORDINATES FOR THE FORECAST SINCE THEY WERE MOST CURRENT, THOUGH UNCERTAIN WHICH FORECAST SHIP POSITION IS CORRECT. NO SIGNIFICANT WEATHER ASSOCIATED WITH EITHER PLOT AT THIS TIME.

VALID TIME	8-Feb 12Z	8-Feb 18Z	9-Feb 00Z	9-Feb 06Z	9-Feb 12Z	9-Feb 18Z	10-Feb 00Z	10-Feb 06Z
SKY CONDITION	MOSTLY CLOUDY	MOSTLY CLOUDY	MOSTLY CLOUDY	PARTLY CLOUDY	MOSTLY CLOUDY	PARTLY CLOUDY	MOSTLY CLOUDY	MOSTLY CLOUDY
WEATHER	NONE	NONE	NONE	NONE	NONE	NONE	NONE	NONE
VISIBILITY (NM)	UNRESTRICTED	UNRESTRICTED	UNRESTRICTED	UNRESTRICTED	UNRESTRICTED	UNRESTRICTED	UNRESTRICTED	UNRESTRICTED
SFC WINDS (DIR & KTS)	SE 5-10	NW 5-10	NE 5-10	SE 5-10	NW 5-10	W 5-10	SW 10-15	SW 10-15
SFC MAX/MIN (°C)	-1/-5				-1/-3			
SST RANGE (°C)	0/-1				0/-1			
SEAS (DIR & FT)	N 2-4	N 4-6	N 3-5	NE 5-7	NE 3-5	NE 2-4	N 2-4	NW 2-4
ICE ACCRETION	LIGHT	LIGHT	LIGHT	LIGHT	LIGHT	LIGHT	LIGHT	LIGHT