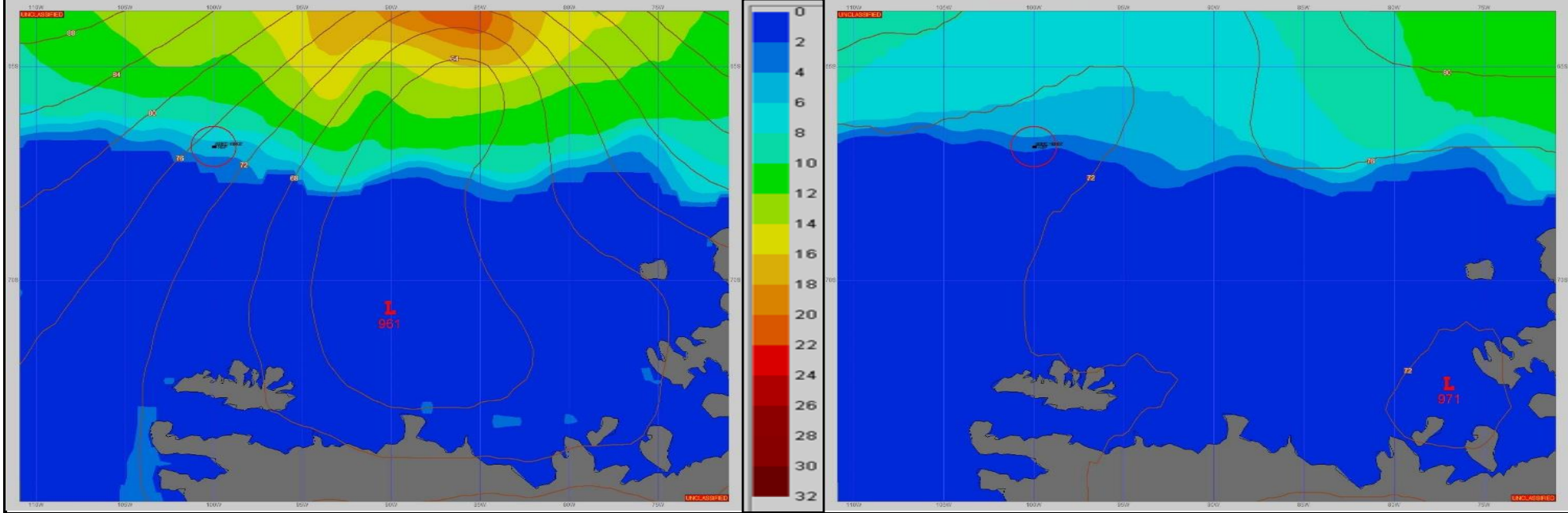


SURFACE ANALYSIS 9-Dec-2023 06Z

SURFACE FORECAST 10-Dec-2023 18Z



METSIT 06Z 9-Dec LOW PRESSURE AT 961MB WEAKENS SLIGHTLY AS IT MOVES ACROSS THE BELLINGSHAUSEN SEA. EXPECT CLOUDY SKIES, A FRESH BREEZE AND SLIGHT TO MODERATE SEAS WITH CONTINUED PERIODS OF REDUCED VISIBILITY IN FOG.

FORECASTER NOTES FORECAST IS FOR THE LAST WAYPOINT(MODLOC L) PROVIDED TO CHARLESTON ROF. PLEASE PROVIDE AN UPDATED ROVREP FOR DEARTURE FROM MODLOC AREA.

VALID TIME	9-Dec 12Z	9-Dec 18Z	10-Dec 00Z	10-Dec 06Z	10-Dec 12Z	10-Dec 18Z	11-Dec 00Z	11-Dec 06Z
SKY CONDITION	PARTLY CLOUDY	PARTLY CLOUDY	MOSTLY CLOUDY	CLOUDY	CLOUDY	CLOUDY	CLOUDY	MOSTLY CLOUDY
WEATHER	FOG	FOG	FOG	FOG	FOG	FOG	FOG	FOG
VISIBILITY (NM)	4 - 6	1 - 3	1/2 - 1	<1/2	<1/2	<1/2	<1/2	1/2 - 1
SFC WINDS (DIR & KTS)	SW 15-20	W 10-15	NW 5-10	N 5-10	NE 5-10	VRB 2-7	W 5-10	WNW 10-15
SFC MAX/MIN (°C)	-1/-2				-4/-1			
SST RANGE (°C)	0/-2				-2/-2			
SEAS (DIR & FT)	W 3-5	WNW 2-4	NW 1-3	NW 1-3	NW 1-3	NW 1-3	NW 1-3	WNW 1-3
ICE ACCRETION	LIGHT	LIGHT	LIGHT	LIGHT	LIGHT	LIGHT	LIGHT	LIGHT