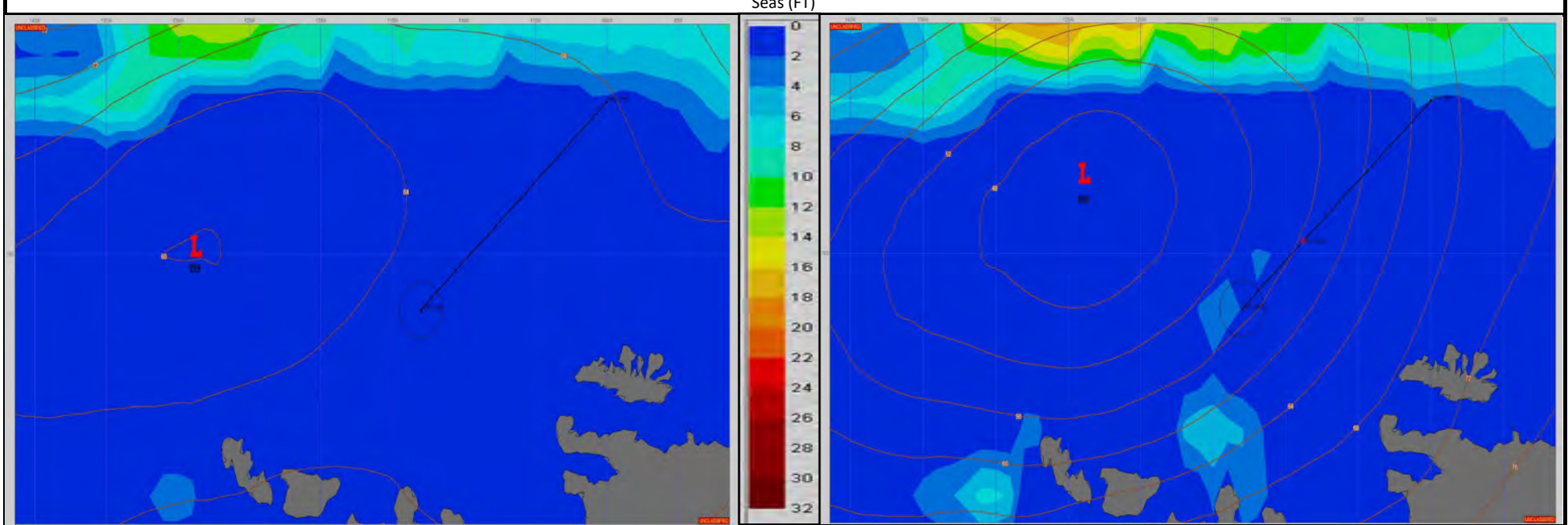


**SURFACE ANALYSIS 10-Dec-2023 06Z**

**SURFACE FORECAST 11-Dec-2023 18Z**



**METSIT 06Z 10-Dec** A WEAK DECAYING LOW AT 959MB IS EXPECTED TO BECOME A BROAD AREA OF TROUGHING. OVERCAST SKIES AND INTERMITTENT FOGGY CONDITIONS ARE EXPECTED FOR MOST OF THE ADMUNDSEN SEA. 24 HOURS OUT ANOTHER LOW MOVES TOWARDS THE AREA OF TROUGHING INCREASING WINDS TOMORROW AS WELL AS DRAWING ADDITIONAL LOW-LEVEL MOISTURE TOWARDS MODLOC TRACK.

**FORECASTER NOTES**

VALID TIME	10-Dec 12Z	10-Dec 18Z	11-Dec 00Z	11-Dec 06Z	11-Dec 12Z	11-Dec 18Z	12-Dec 00Z	12-Dec 06Z
SKY CONDITION	CLOUDY	CLOUDY	MOSTLY CLOUDY	CLOUDY	CLOUDY	CLOUDY	CLOUDY	CLOUDY
WEATHER	FOG	FOG	FOG	FOG	FOG	SNOW & FOG	SNOW & FOG	SNOW & FOG
VISIBILITY (NM)	2 - 4	2 - 4	3 - 5	1 - 3	1/2 - 1	<1/2	<1/2	<1/2
SFC WINDS (DIR & KTS)	NW 5-10	VRB 5-10	VRB 5-10	NE 10-15	NE 15-25 GUST 35	NE 20-30 GUST 40	ENE 20-30	E 20-30
SFC MAX/MIN (°C)	0/-2				-1/-2			
SST RANGE (°C)	-1/-2				-1/-2			
SEAS (DIR & FT)	NW 1-3	N 1-3	N 1-3	N 1-3	N 1-3	N 1-3	NE 1-3	E 1-3
ICE ACCRETION	NIL	NIL	NIL	LIGHT	LIGHT	LIGHT	LIGHT	LIGHT