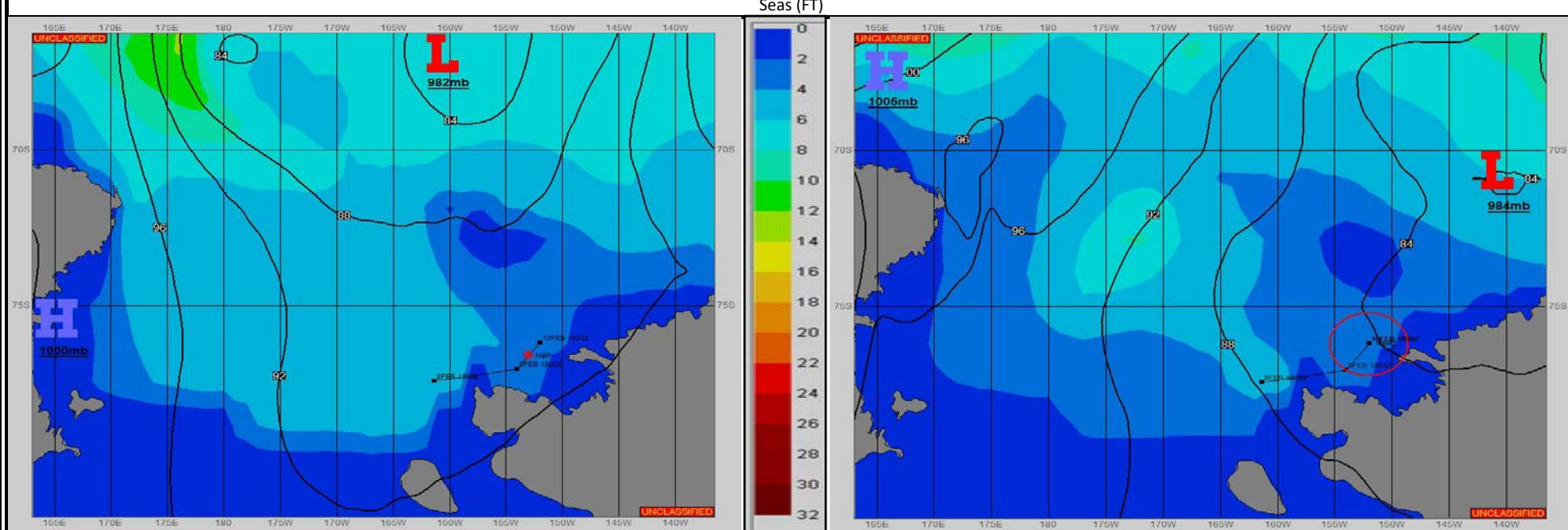


SURFACE ANALYSIS 10-Feb-2023 06Z

SURFACE FORECAST 11-Feb-2023 18Z



METSIT 06Z 10-Feb WEAK LOW PRESSURE TO THE NORTH WILL CONTINUE TO DRAW A MILD BREEZE OFF THE CONTINENT. MOSTLY CLOUDY SKIES WILL HELP KEEP THE AREA MOSTLY FOG FREE.

FORECASTER NOTES

VALID TIME	10-Feb 12Z	10-Feb 18Z	11-Feb 00Z	11-Feb 06Z	11-Feb 12Z	11-Feb 18Z	12-Feb 00Z	12-Feb 06Z
SKY CONDITION	MOSTLY CLOUDY	MOSTLY CLOUDY	MOSTLY CLOUDY	MOSTLY CLOUDY	MOSTLY CLOUDY	MOSTLY CLOUDY	MOSTLY CLOUDY	MOSTLY CLOUDY
WEATHER	FOG	FOG	NONE	NONE	NONE	NONE	NONE	NONE
VISIBILITY (NM)	4 - 6	4 - 6	UNRESTRICTED	UNRESTRICTED	UNRESTRICTED	UNRESTRICTED	UNRESTRICTED	UNRESTRICTED
SFC WINDS (DIR & KTS)	NE 5-10	E 8-12	SE 5-10	S 8-12	S 5-10	S 5-10	S 5-10	S 5-10
SFC MAX/MIN (°C)	-2/-5				-2/-6			
SST RANGE (°C)	0/-1				0/-1			
SEAS (DIR & FT)	NW 2-4	NW 2-4	NW 2-4	NW 2-4	NW 2-4	NW 2-4	W 2-4	W 2-4
ICE ACCRETION	LIGHT	LIGHT	LIGHT	LIGHT	LIGHT	LIGHT	LIGHT	LIGHT