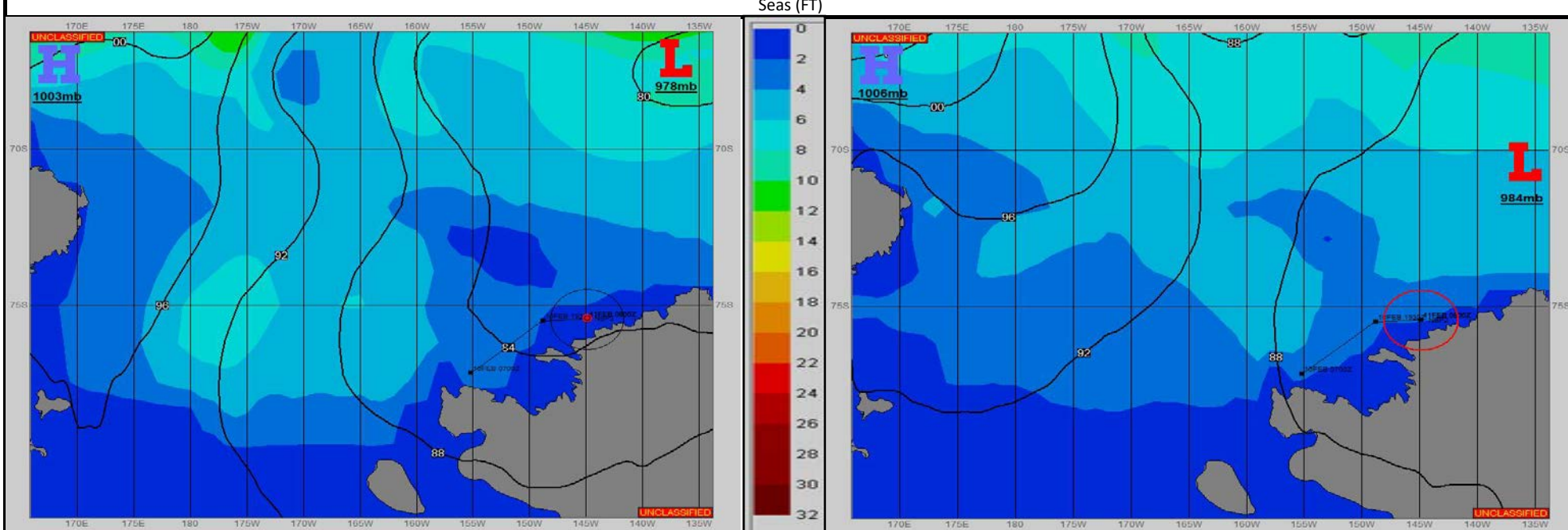


**SURFACE ANALYSIS 11-Feb-2023 06Z**

**SURFACE FORECAST 12-Feb-2023 18Z**



**METSIT 06Z 11-Feb** AS THE PRESSURE GRADIENT COLLAPSES, LIGHT OFF-CONTINENT WINDS WILL BE THE DOMINANT FACTOR THROUGH THE PERIOD. PARTLY CLOUDY SKIES SHOULD CONTINUE TO PROVIDE PLEASANT DAYS FOR YOUR WORK. ENJOY THE NICE WEATHER WHILE WE'VE GOT IT!

**FORECASTER NOTES**

VALID TIME	11-Feb 12Z	11-Feb 18Z	12-Feb 00Z	12-Feb 06Z	12-Feb 12Z	12-Feb 18Z	13-Feb 00Z	13-Feb 06Z
SKY CONDITION	PARTLY CLOUDY	PARTLY CLOUDY	PARTLY CLOUDY	PARTLY CLOUDY	PARTLY CLOUDY	PARTLY CLOUDY	PARTLY CLOUDY	PARTLY CLOUDY
WEATHER	NONE	NONE	NONE	NONE	NONE	NONE	NONE	NONE
VISIBILITY (NM)	UNRESTRICTED	UNRESTRICTED	UNRESTRICTED	UNRESTRICTED	UNRESTRICTED	UNRESTRICTED	UNRESTRICTED	UNRESTRICTED
SFC WINDS (DIR & KTS)	SE 5-10	SE 5-10	SE 5-10	SE 5-10	SE 5-10	SE 5-10	E 5-10	S 5-10
SFC MAX/MIN (°C)	-3/-6				-5/-7			
SST RANGE (°C)	-1/-2				-1/-2			
SEAS (DIR & FT)	N 1-3	N 1-3	N 1-3	N 1-3	N 1-3	N 1-3	N 1-3	N 1-3
ICE ACCRETION	LIGHT	LIGHT	LIGHT	LIGHT	LIGHT	LIGHT	LIGHT	LIGHT