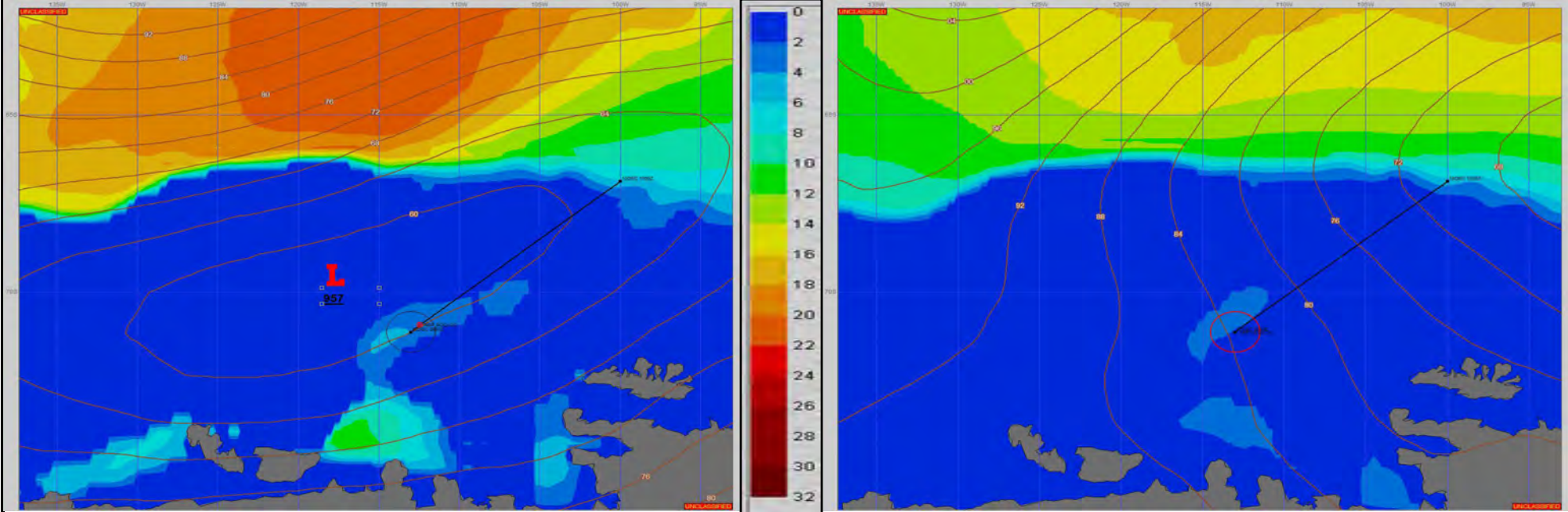


SURFACE ANALYSIS 12-Dec-2023 06Z

Seas (FT)

SURFACE FORECAST 13-Dec-2023 18Z



METSIT 06Z 12-Dec A LOW AT 957MB OVER THE ADMUNDSEN SEA CONTINUES WEAKENING AS IT MOVES TOWARDS THE ANTARCTIC PENINSULA. EARLY IN THE FORECAST PERIOD, EXPECT OVERCAST SKIES, INCREASED WINDS, LIGHT SNOW, AND INTERMITTENT FOGGY CONDITIONS. SEAS WILL REMAIN RELATIVELY CALM THROUGHOUT THE FORECAST. WEDNESDAY, HIGHER PRESSURE BUILDS OVER THE REGION PROVIDING FAVORABLE WX AND CLEARING SKIES.

FORECASTER NOTES

VALID TIME	12-Dec 12Z	12-Dec 18Z	13-Dec 00Z	13-Dec 06Z	13-Dec 12Z	13-Dec 18Z	14-Dec 00Z	14-Dec 06Z
SKY CONDITION	CLOUDY	CLOUDY	CLOUDY	CLOUDY	MOSTLY CLOUDY	PARTLY CLOUDY	PARTLY CLOUDY	CLEAR
WEATHER	SNOW/BLSN	SNOW & FOG	SNOW	SNOW & FOG	VICINITY FOG	NONE	NONE	NONE
VISIBILITY (NM)	1/2 - 1	2 - 4	4 - 6	1 - 3	UNRESTRICTED	UNRESTRICTED	UNRESTRICTED	UNRESTRICTED
SFC WINDS (DIR & KTS)	E 15-25	E 15-20	E 15-20	SE 20-25	SE 15-25	S 15-20	SW 15-20	SW 15-20
SFC MAX/MIN (°C)	0/-1				1/-1			
SST RANGE (°C)	0/-1				0/-1			
SEAS (DIR & FT)	ENE 2-4	E 2-4	E 2-4	SE 1-3	SE 1-3	SSE 1-3	SW 1-3	WSW 1-3
ICE ACCRETION	NIL	NIL	NIL	NIL	NIL	NIL	NIL	NIL