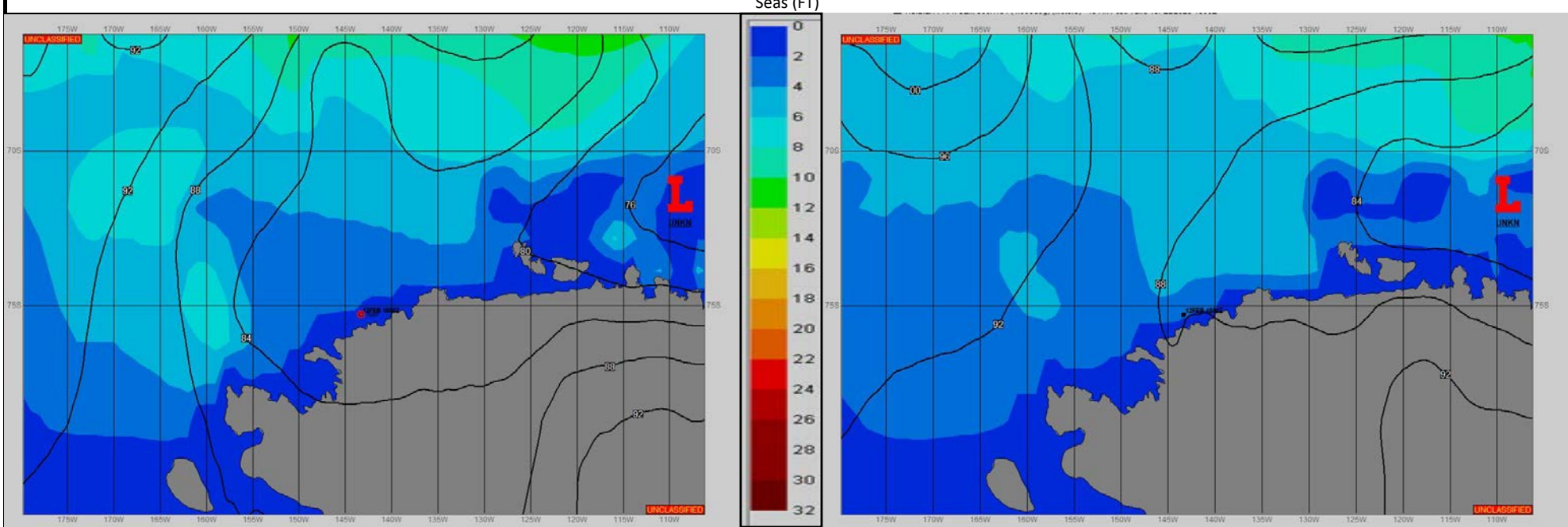


**SURFACE ANALYSIS 12-Feb-2023 06Z**

**SURFACE FORECAST 13-Feb-2023 18Z**



**METSIT 06Z 12-Feb** OPERATIONS AREA CONTINUES TO BENEFIT FROM COOL, LIGHT OFF-CONTINENT FLOW AND A WEAK PRESSURE GRAIENT. PRISTINE SKY CONDITIONS TO GAIN A FEW CLOUDS OVER THE FORECAST PERIOD WITH UNRESTRICTED VISIBILITY AND LIGHT WIND.

**FORECASTER NOTES**

VALID TIME	12-Feb 12Z	12-Feb 18Z	13-Feb 00Z	13-Feb 06Z	13-Feb 12Z	13-Feb 18Z	14-Feb 00Z	14-Feb 06Z
SKY CONDITION	PARTLY CLOUDY	PARTLY CLOUDY	PARTLY CLOUDY	MOSTLY CLOUDY	MOSTLY CLOUDY	MOSTLY CLOUDY	MOSTLY CLOUDY	MOSTLY CLOUDY
WEATHER	NONE	NONE	NONE	NONE	NONE	NONE	NONE	NONE
VISIBILITY (NM)	UNRESTRICTED	UNRESTRICTED	UNRESTRICTED	UNRESTRICTED	UNRESTRICTED	UNRESTRICTED	UNRESTRICTED	UNRESTRICTED
SFC WINDS (DIR & KTS)	E 5	E 5-10	E 5-10	E 5	NE 5	VRB 5	SW 5	SW 5-10
SFC MAX/MIN (°C)	-4/-7				-4/-7			
SST RANGE (°C)	-1/-2				-1/-2			
SEAS (DIR & FT)	N 1-3	N 1-3	N 1-3	N 1-3	NW 2-4	NW 1-3	NW 1-3	NW 1-3
ICE ACCRETION	LIGHT	LIGHT	LIGHT	LIGHT	LIGHT	LIGHT	LIGHT	LIGHT