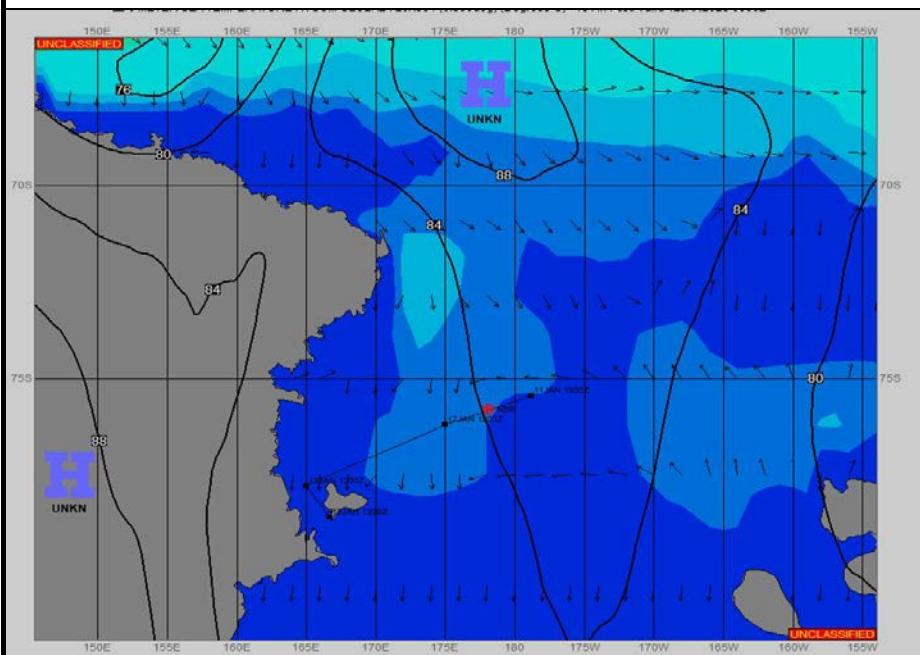
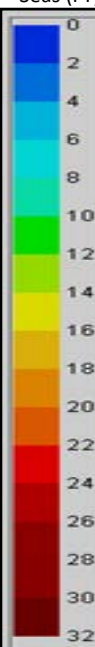


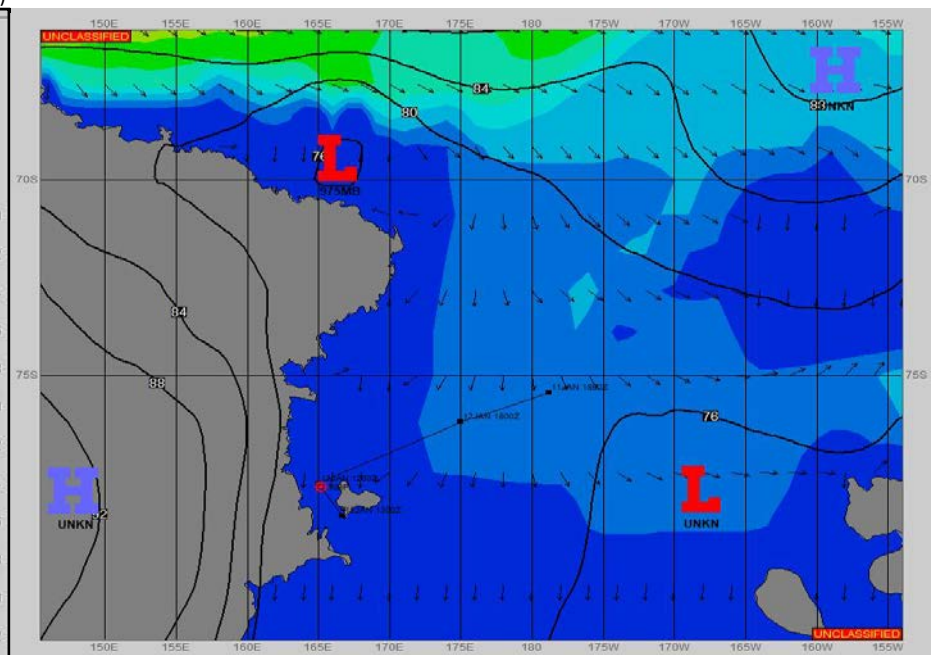
SURFACE ANALYSIS 12-Jan-2023 06Z



Seas (FT)



SURFACE FORECAST 13-Jan-2023 18Z



METSIT 06Z 12-Jan WEAK LEE-SIDE LOW PRESSURE TO DEVELOP IN THE NORTHWEST ROSS SEA AND MOVE SOUTHEAST THROUGH THE CENTRAL ROSS SEA AND FILL. THIS WEAK LOW WILL BRING INCREASED CLOUDS THROUGH 13/0000Z, AND SWING THE WINDS TO THE SOUTHEAST FROM APPROXIMATELY 13/0000Z THROUGH 13/0900Z. VISIBILITY SHOULD REMAIN UNRESTRICTED.

FORECASTER NOTES

VALID TIME	12-Jan 12Z	12-Jan 18Z	13-Jan 00Z	13-Jan 06Z	13-Jan 12Z	13-Jan 18Z	14-Jan 00Z	14-Jan 06Z
SKY CONDITION	MOSTLY CLOUDY	CLOUDY	CLOUDY	PARTLY CLOUDY	PARTLY CLOUDY	PARTLY CLOUDY	PARTLY CLOUDY	PARTLY CLOUDY
WEATHER	NONE	NONE	NONE	NONE	NONE	NONE	NONE	NONE
VISIBILITY (NM)	UNRESTRICTED	UNRESTRICTED	UNRESTRICTED	UNRESTRICTED	UNRESTRICTED	UNRESTRICTED	UNRESTRICTED	UNRESTRICTED
SFC WINDS (DIR & KTS)	NW 15-20	NW 10-15	SE 5-10	SE 5-10	NW 5-10	NW 5-10	NW 5-10	NW 5
SFC MAX/MIN (°C)	-2/-4				-2/-6			
SST RANGE (°C)	0/-1				0/-1			
SEAS (DIR & FT)	N 2-4	N 2-4	NE 1-3	NE 0-2	N 0-2	N 0-1	N 0-1	N 0-1
ICE ACCRETION	LIGHT	LIGHT	LIGHT	LIGHT	LIGHT	LIGHT	LIGHT	LIGHT