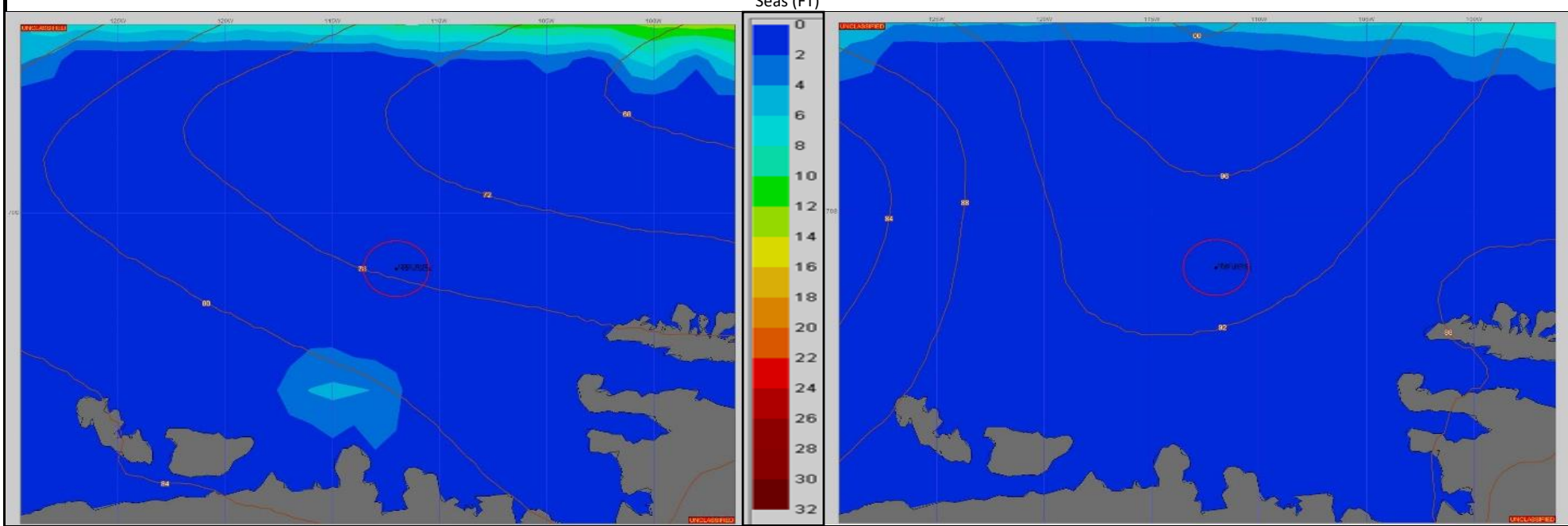


SURFACE ANALYSIS 13-Dec-2023 06Z

SURFACE FORECAST 14-Dec-2023 18Z



METSIT 06Z 13-Dec A LOW AT 965MB OVER THE BELLINGSHUASEN SEA CONTINUES WEAKENING AS IT MOVES TOWARDS THE ANTARCTIC PENINSULA. EXPECT CLOUDY SKIES BECOMING PARTLY CLOUDY BY 00Z WITH A MODERATE BREEZE AND SMOOTH SEAS FOR TODAY.

FORECASTER NOTES

VALID TIME	13-Dec 12Z	13-Dec 18Z	14-Dec 00Z	14-Dec 06Z	14-Dec 12Z	14-Dec 18Z	15-Dec 00Z	15-Dec 06Z
SKY CONDITION	CLOUDY	MOSTLY CLOUDY	PARTLY CLOUDY	PARTLY CLOUDY	MOSTLY CLOUDY	CLOUDY	CLOUDY	CLOUDY
WEATHER	VICINITY FOG	FOG	NONE	NONE	VICINITY FOG	VICINITY FOG	SNOW & FOG	SNOW & FOG
VISIBILITY (NM)	UNRESTRICTED	3 - 5	UNRESTRICTED	UNRESTRICTED	UNRESTRICTED	UNRESTRICTED	1/2 - 1	1/2 - 1
SFC WINDS (DIR & KTS)	SE 10-15	S 15-20	SSW 15-20	SW 10-15	SW 10-15	W 10-15	NW 10-15	N 15-20
SFC MAX/MIN (°C)	1/-1				1/-1			
SST RANGE (°C)	-1/-2				-1/-2			
SEAS (DIR & FT)	SE 0-2	S 0-2	SSW 0-2	SW 0-2	WSW 0-2	W 0-2	WNW 0-2	WNW 0-2
ICE ACCRETION	NIL	NIL	NIL	NIL	NIL	NIL	NIL	NIL