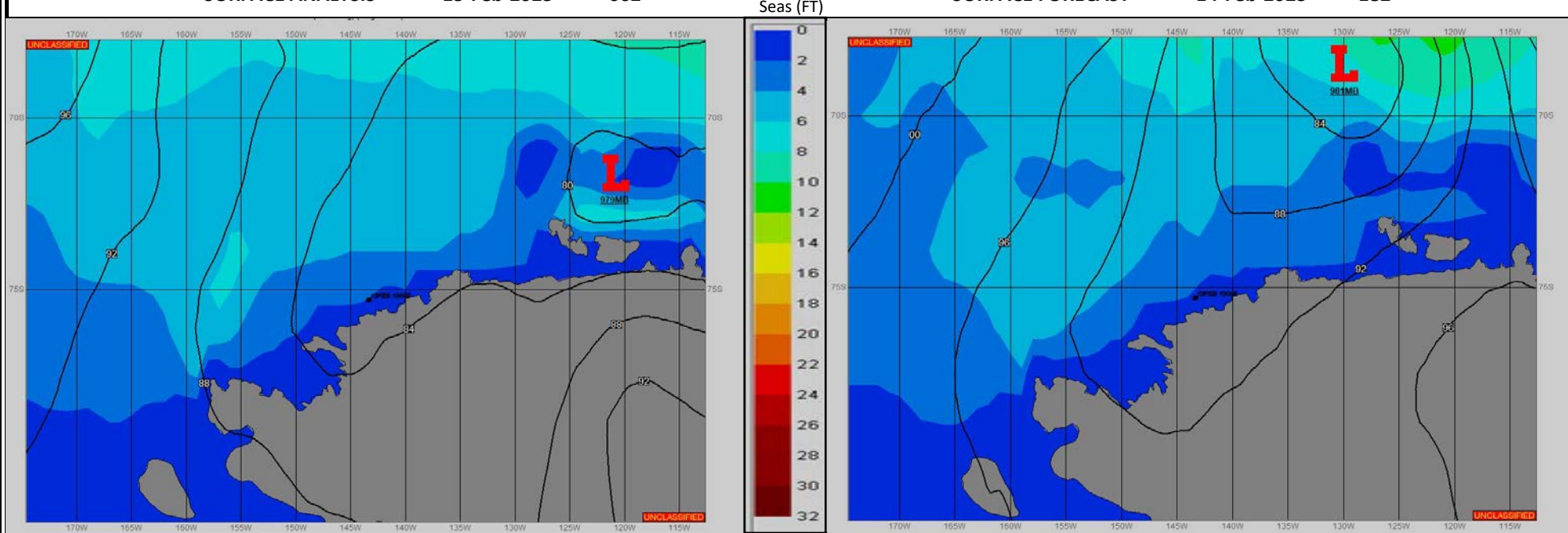


SURFACE ANALYSIS 13-Feb-2023 06Z

SURFACE FORECAST 14-Feb-2023 18Z



METSIT 06Z 13-Feb LOW PRESSURE DEVELOPMENT TO THE NORTHEAST OF THE OPERATIONS AREA TO BRING INCREASED CLOUD COVER FOR THE FORECAST PERIOD. CONTINUED CONTINENTAL INFLUENCE SHOULD KEEP VISIBILITY UNRESTRICTED WITH COOL TEMPERATURES. NO SIGNIFICANT WEATHER TO NOTE FOR THE FORECAST PERIOD.

FORECASTER NOTES

VALID TIME	13-Feb 12Z	13-Feb 18Z	14-Feb 00Z	14-Feb 06Z	14-Feb 12Z	14-Feb 18Z	15-Feb 00Z	15-Feb 06Z
SKY CONDITION	CLOUDY	CLOUDY	CLOUDY	CLOUDY	CLOUDY	CLOUDY	MOSTLY CLOUDY	MOSTLY CLOUDY
WEATHER	NONE	NONE	NONE	NONE	NONE	NONE	NONE	NONE
VISIBILITY (NM)	UNRESTRICTED	UNRESTRICTED	UNRESTRICTED	UNRESTRICTED	UNRESTRICTED	UNRESTRICTED	UNRESTRICTED	UNRESTRICTED
SFC WINDS (DIR & KTS)	SE 5	SE 5-10	SE 5-10	S 5-10	S 5-10	SE 5-10	E 5-10	S 5-10
SFC MAX/MIN (°C)	-4/-7				-3/-6			
SST RANGE (°C)	-1/-2				-1/-2			
SEAS (DIR & FT)	NW 1-3	NW 1-3	NW 1-3	NW 1-3	NW 1-3	NW 1-3	NW 1-3	NW 1-3
ICE ACCRETION	LIGHT	LIGHT	LIGHT	LIGHT	LIGHT	LIGHT	LIGHT	LIGHT