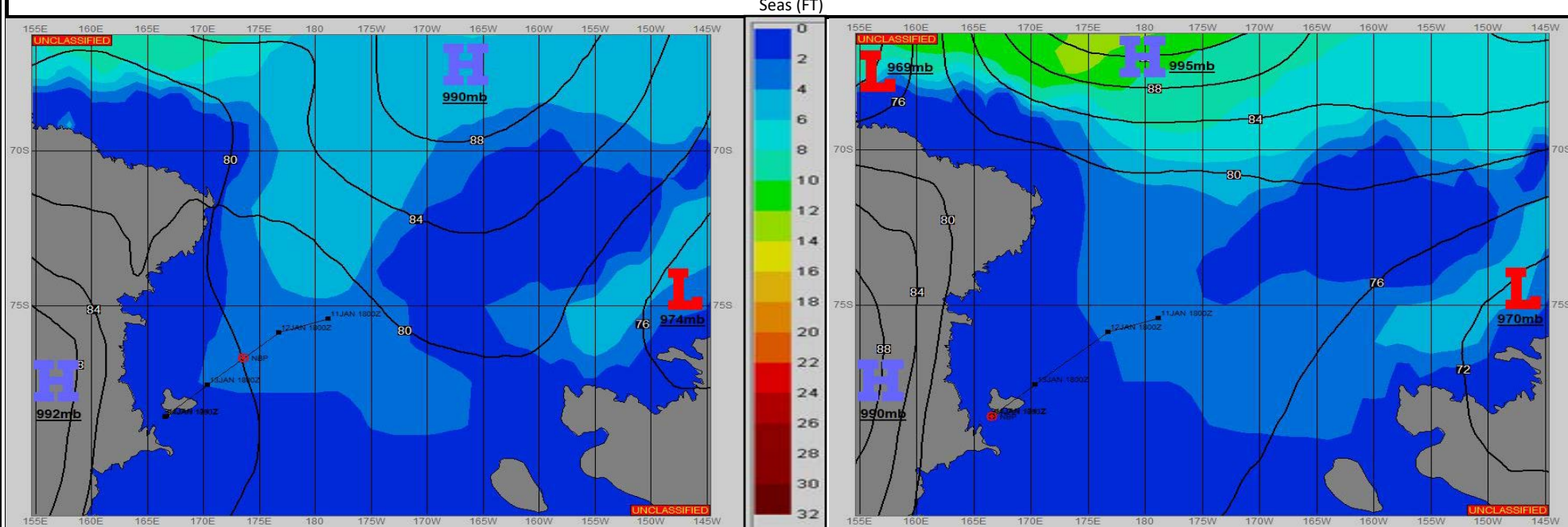


SURFACE ANALYSIS 13-Jan-2023 06Z

SURFACE FORECAST 14-Jan-2023 18Z



METSIT 06Z 13-Jan CONTINENTAL HIGH PRESSURE WILL KEEP THE ROSS ISLAND REGION FAIRLY TAME THROUGH THE PERIOD. CLOUD COVER WILL IMPROVE HEADING INTO TOMORROW, AND WINDS WILL GRADUALLY BACK DOWN. AIR TEMPERATURES WILL BECOME COOLER AS YOU MAKE YOUR FINAL APPROACH TO MCMURDO.

FORECASTER NOTES

VALID TIME	13-Jan 12Z	13-Jan 18Z	14-Jan 00Z	14-Jan 06Z	14-Jan 12Z	14-Jan 18Z	15-Jan 00Z	15-Jan 06Z
SKY CONDITION	MOSTLY CLOUDY	MOSTLY CLOUDY	MOSTLY CLOUDY	MOSTLY CLOUDY	PARTLY CLOUDY	PARTLY CLOUDY	PARTLY CLOUDY	PARTLY CLOUDY
WEATHER	NONE	NONE	FOG	FOG	NONE	NONE	NONE	NONE
VISIBILITY (NM)	UNRESTRICTED	UNRESTRICTED	4 - 6	1/2 - 1	UNRESTRICTED	UNRESTRICTED	UNRESTRICTED	UNRESTRICTED
SFC WINDS (DIR & KTS)	S 5-10	NW 8-12	NW 5-10	N 5-10	NW 5-10	NW 5-10	S 0-5	SE 0-5
SFC MAX/MIN (°C)	-1/-6				-1/-8			
SST RANGE (°C)	1/-2				-1/-2			
SEAS (DIR & FT)	NE 1-3	NE 1-3	N 0-2	N 0-2	N 0-2	N 0-1	N 0-1	N 0-1
ICE ACCRETION	LIGHT	LIGHT	LIGHT	LIGHT	LIGHT	LIGHT	LIGHT	LIGHT