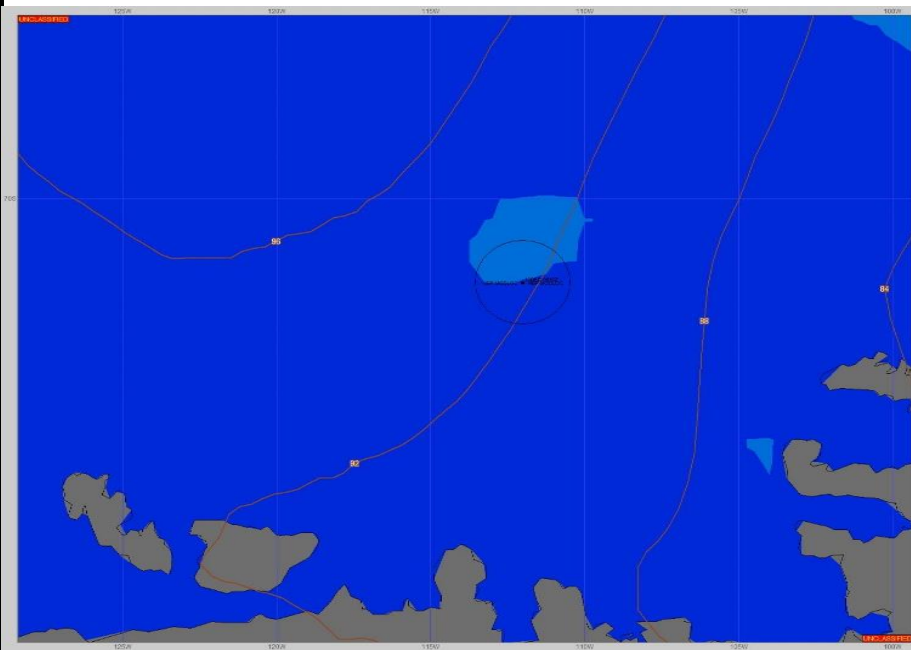


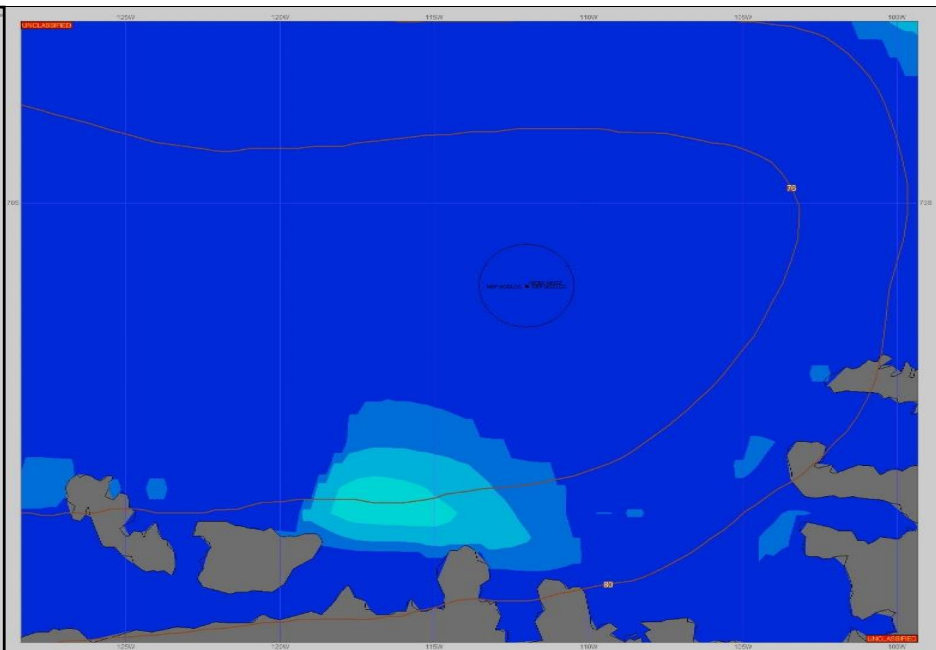
**SURFACE ANALYSIS 14-Dec-2023 06Z**



Seas (FT)



**SURFACE FORECAST 15-Dec-2023 18Z**



**METSIT 06Z 14-Dec** A LOW AT 9705MB OFF THE WEST ANTARCTIC COAST NEAR 135°W IS WORKING IT'S WAY TOWARD THE AMUNDSEN SEA. EXPECT MOSTLY CLOUDY TO CLOUDY SKIES WITH A MODERATE BREEZE AND SMOOTH TO SLIGHT SEAS AS THIS SYSTEM APPROACHES YOUR MODLOC LOCATION.

**FORECASTER NOTES**

VALID TIME	14-Dec 12Z	14-Dec 18Z	15-Dec 00Z	15-Dec 06Z	15-Dec 12Z	15-Dec 18Z	16-Dec 00Z	16-Dec 06Z
SKY CONDITION	MOSTLY CLOUDY	CLOUDY	CLOUDY	CLOUDY	CLOUDY	CLOUDY	CLOUDY	CLOUDY
WEATHER	NONE	NONE	NONE	NONE	SNOW & FOG	SNOW & FOG	FOG	FOG
VISIBILITY (NM)	UNRESTRICTED	UNRESTRICTED	UNRESTRICTED	UNRESTRICTED	1 - 3	1/2 - 1	1/2 - 1	1/2 - 1
SFC WINDS (DIR & KTS)	WSW 10-15	W 10-15	NW 10-15	NNE 15-20	NW 10-15	W 10-15	W 10-15	WNW 5-10
SFC MAX/MIN (°C)	-1/-2				0/-1			
SST RANGE (°C)	-1/-2				-1/-2			
SEAS (DIR & FT)	WSW 0-2	W 0-2	WNW 0-2	N 1-3	N 1-3	NW 0-2	WNW 0-2	NW 0-2
ICE ACCRETION	LIGHT	LIGHT	LIGHT	LIGHT	LIGHT	LIGHT	LIGHT	LIGHT