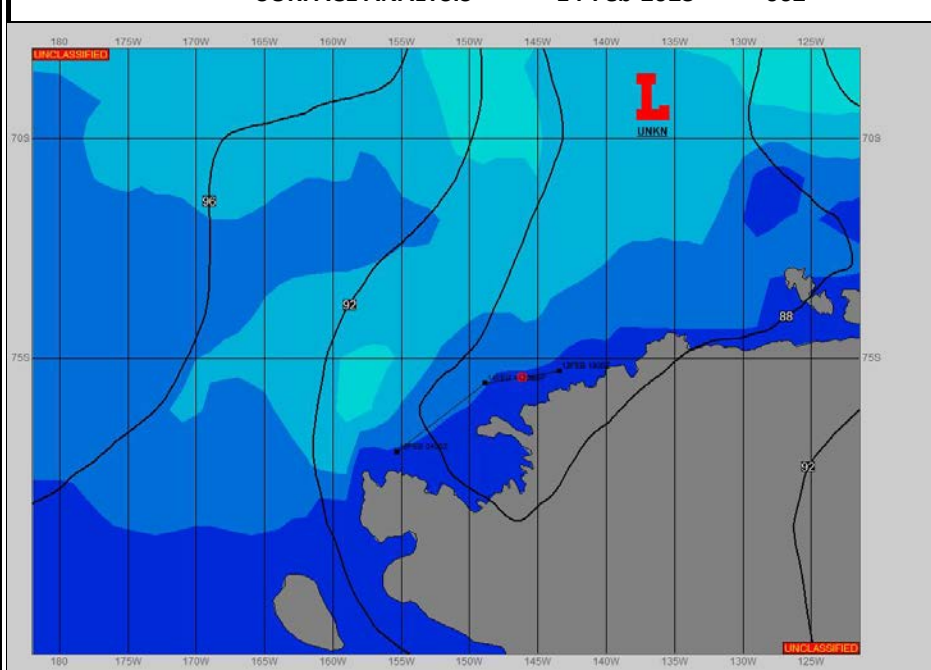
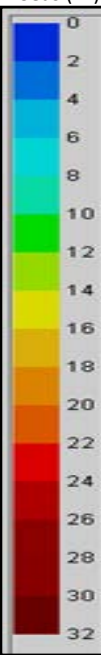


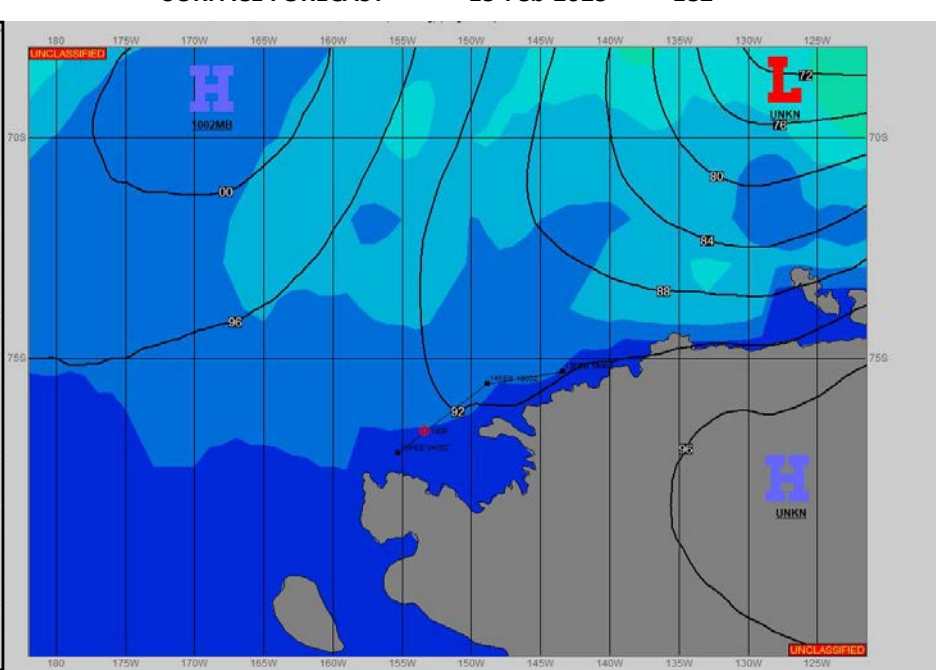
**SURFACE ANALYSIS 14-Feb-2023 06Z**



Seas (FT)



**SURFACE FORECAST 15-Feb-2023 18Z**



**METSIT 06Z 14-Feb** DEEPENING LOW PRESSURE TO THE NORTHEAST SHOULD CONTINUE TO FUNNEL VARIABLE CLOUDINESS OVER THE OPERATIONAL AREA. OFF-CONTINENT LOW LEVEL FLOW KEEPS VISIBILITY UNRESTRICTED WITH COOL TEMPERATURES.

**FORECASTER NOTES**

VALID TIME	14-Feb 12Z	14-Feb 18Z	15-Feb 00Z	15-Feb 06Z	15-Feb 12Z	15-Feb 18Z	16-Feb 00Z	16-Feb 06Z
SKY CONDITION	CLOUDY	MOSTLY CLOUDY	MOSTLY CLOUDY	MOSTLY CLOUDY	MOSTLY CLOUDY	CLOUDY	MOSTLY CLOUDY	MOSTLY CLOUDY
WEATHER	NONE	NONE	NONE	NONE	NONE	NONE	NONE	NONE
VISIBILITY (NM)	UNRESTRICTED	UNRESTRICTED	UNRESTRICTED	UNRESTRICTED	UNRESTRICTED	UNRESTRICTED	UNRESTRICTED	UNRESTRICTED
SFC WINDS (DIR & KTS)	S 5-10	S 5	SE 5-10	SE 5	SE 5	VRB 5	SE 5-10	VRB 5
SFC MAX/MIN (°C)	-3/-6				-4/-7			
SST RANGE (°C)	-1/-2				-1/-2			
SEAS (DIR & FT)	NW 1-3	W 2-4	W 2-4	NW 1-3	NW 1-3	NW 1-3	NW 1-3	NW 1-3
ICE ACCRETION	LIGHT	LIGHT	LIGHT	LIGHT	LIGHT	LIGHT	LIGHT	LIGHT