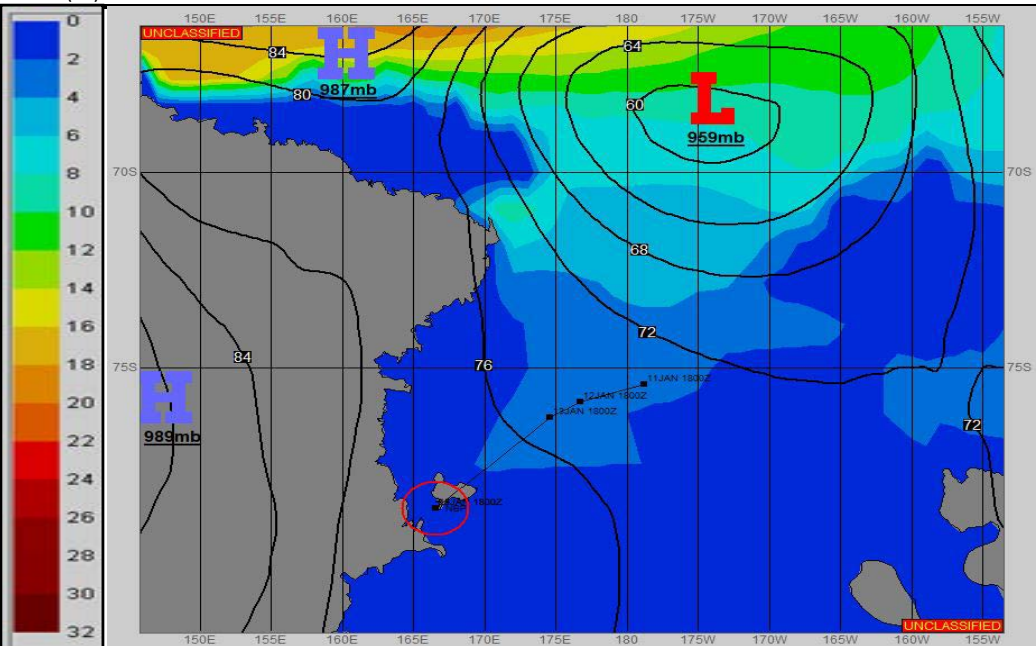
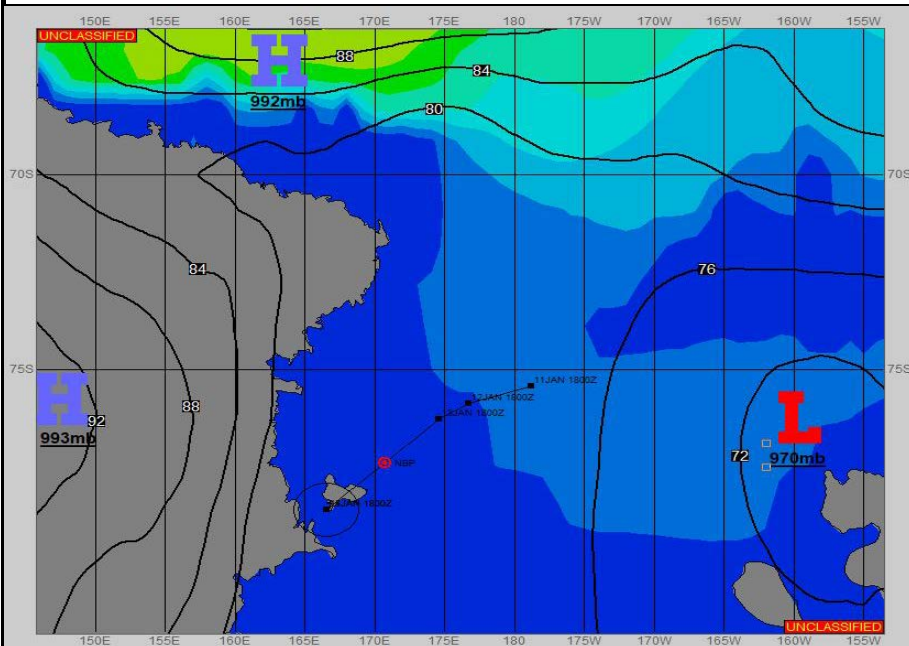


**SURFACE ANALYSIS 14-Jan-2023 06Z**

Seas (FT)

**SURFACE FORECAST 15-Jan-2023 18Z**



**METSIT 06Z 14-Jan** WITH HIGH PRESSURE TO THE WEST, AND LOW PRESSURE FAR TO THE EAST, THE REMAINDER OF YOUR VOYAGE TO MCMURDO SHOULD PROVE METEOROLOGICALLY UNEVENTFUL. CLOUDY SKIES WILL BE IN AND OUT, AND LIGHT WINDS AND SEAS WILL PREVAIL. TEMPERATURES WILL SLOWLY CONTINUE TO COOL AS YOU PROCEED FURTHER SOUTH.

**FORECASTER NOTES**

VALID TIME	14-Jan 12Z	14-Jan 18Z	15-Jan 00Z	15-Jan 06Z	15-Jan 12Z	15-Jan 18Z	16-Jan 00Z	16-Jan 06Z
SKY CONDITION	PARTLY CLOUDY	MOSTLY CLOUDY	MOSTLY CLOUDY	MOSTLY CLOUDY	MOSTLY CLOUDY			
WEATHER	NONE	NONE	NONE	NONE	NONE			
VISIBILITY (NM)	UNRESTRICTED	UNRESTRICTED	UNRESTRICTED	UNRESTRICTED	UNRESTRICTED			
SFC WINDS (DIR & KTS)	N 0-5	N 0-5	SE 0-5	E 0-5	E 0-5			
SFC MAX/MIN (°C)	-2/-7							
SST RANGE (°C)	-1/-2							
SEAS (DIR & FT)	N 0-1	N 0-1	N 0-1	N 0-1	N 0-1			
ICE ACCRETION	NIL	NIL	NIL	NIL				