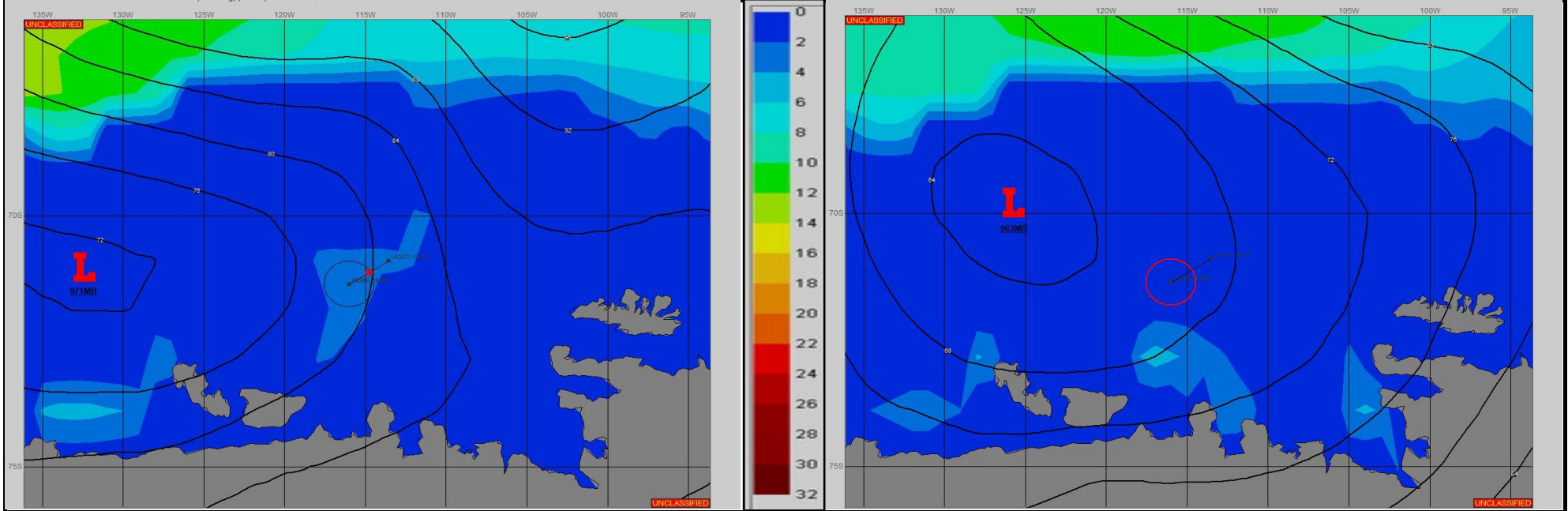


**SURFACE ANALYSIS 15-Dec-2023 06Z**

Seas (FT)

**SURFACE FORECAST 16-Dec-2023 18Z**



**METSIT 06Z 15-Dec** 971MB LOW NEAR 71S 133W MOVES EAST AND DEEPENS TO 961MB NEAR 71S 120W BY THE END OF THE FORECAST PERIOD. EXPECT NORTHERLY WIND IN THE 10 TO 15 KNOT RANGE WITH PERIODS OF REDUCED VISIBILITY IN FOG AND LIGHT SNOW.

**FORECASTER NOTES**

VALID TIME	15-Dec 12Z	15-Dec 18Z	16-Dec 00Z	16-Dec 06Z	16-Dec 12Z	16-Dec 18Z	17-Dec 00Z	17-Dec 06Z
SKY CONDITION	CLOUDY	CLOUDY	CLOUDY	CLOUDY	CLOUDY	CLOUDY	CLOUDY	CLOUDY
WEATHER	SNOW & FOG	FOG	FOG	FOG	FOG	FOG	FOG	SNOW & FOG
VISIBILITY (NM)	1-3	3-5	3-5	3-5	1-3	1-3	1/2-1	1-3
SFC WINDS (DIR & KTS)	NW 10-15	NW 10-15	NW 10	NW 5-10	NE 10	NE 10-15	NE 10-15	N 5-10
SFC MAX/MIN (°C)	0/-2				0/-2			
SST RANGE (°C)	-0.5/-1.5				-0.5/-1.5			
SEAS (DIR & FT)	NW 1-3	NW 1-3	N 0-2	SW 0-2	NW 0-2	NE 0-2	NE 1.3	N 0-2
ICE ACCRETION	LIGHT	LIGHT	LIGHT	LIGHT	LIGHT	LIGHT	LIGHT	LIGHT