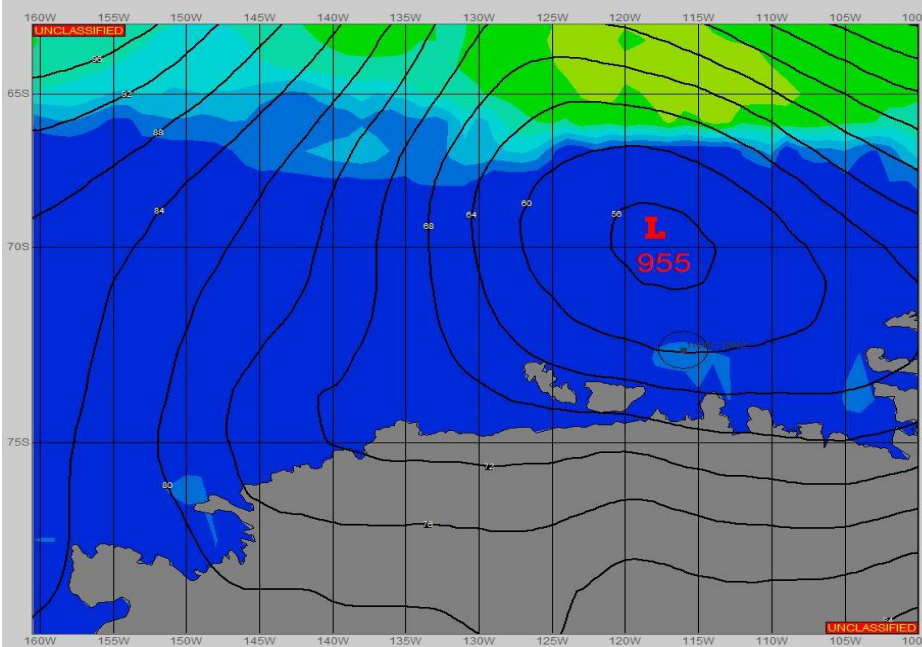


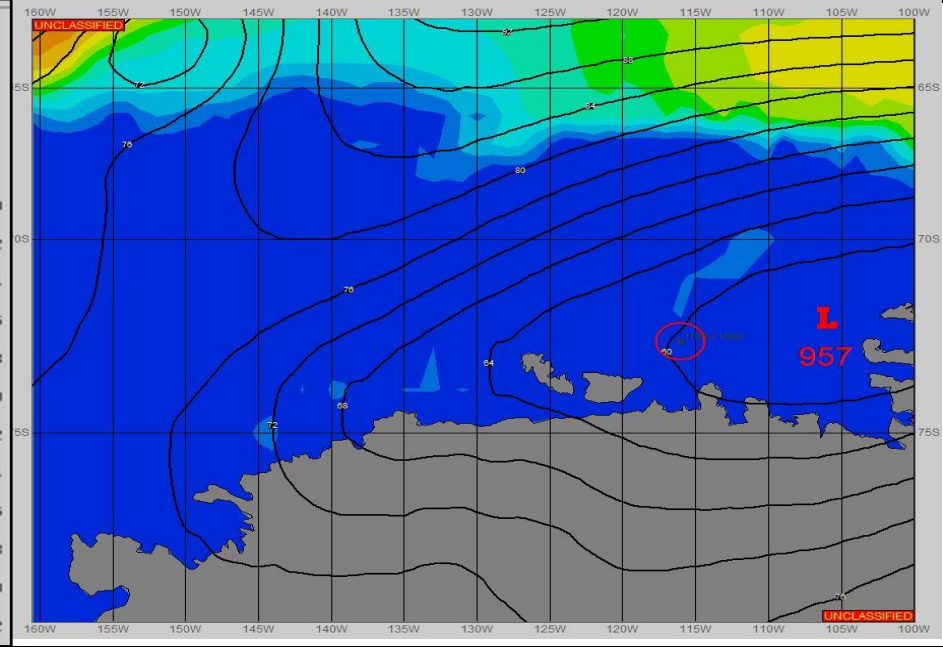
**SURFACE ANALYSIS 17-Dec-2023 06Z**



Seas (FT)



**SURFACE FORECAST 18-Dec-2023 18Z**



**METSIT 06Z 17-Dec** SHIP POSITIONED SOUTH OF 955MB LOW NEAR 70S 115W. THE LOW WILL MOVE TO THE SOUTHEAST AS THE GRADIENT LOOSENS WITH THE CENTRAL PRESSURE INCREASING TO 957MB NEAR 72S 106W BY 17/1800Z. EXPECT STRONG WINDS AND SEAS WITH TIGHT PRESSURE GRADIENT STARTING OUT THEN DECREASING AS LOW MOVES TO THE EAST OF POSITION THROUGH THE PERIOD. VISIBLTY WILL BE RESTRICTED IN SNOW AND FOG DUE TO EFFECTS OF THE LOW, AT TIMES LESS THAN 1 MILE. PEAK WIND SPEEDS WILL BE NEAR 35 KNOTS FROM THE SOUTHEAST, AND SEAS PEAKING IN THE 2-4 FOOT RANGE EARLY IN THE PERIOD.

**FORECASTER NOTES**

VALID TIME	17-Dec 12Z	17-Dec 18Z	18-Dec 00Z	18-Dec 06Z	18-Dec 12Z	18-Dec 18Z	19-Dec 00Z	19-Dec 06Z
SKY CONDITION	CLOUDY	CLOUDY	CLOUDY	CLOUDY	CLOUDY	CLOUDY	CLOUDY	CLOUDY
WEATHER	SNOW & FOG	SNOW & FOG	SNOW & FOG	SNOW & FOG	SNOW & FOG	SNOW & FOG	SNOW & FOG	SNOW & FOG
VISIBILITY (NM)	1 - 3	1/2 - 1	1 - 3	2 - 4	1 - 3	1 - 3	1 - 3	1/2 - 1
SFC WINDS (DIR & KTS)	SE 25-30 GUST 35	SE 25-30 GUST 35	S 15-20 GUST 25	S 10-15 GUST 20	SW 10-15 GUST 20	SW 10-15 GUST 20	SW 10-15 GUST 20	SW 5-10
SFC MAX/MIN (°C)	-1/-2				0/-1			
SST RANGE (°C)	-1.0/-2.0				-0.5/-1.0			
SEAS (DIR & FT)	SE 2-4	SE 2-4	SE 1-3	SE 1-3	SE 1-3	SE 1-3	SE 0-2	SE 0-2
ICE ACCRETION	LIGHT	LIGHT	LIGHT	LIGHT	LIGHT	LIGHT	LIGHT	LIGHT