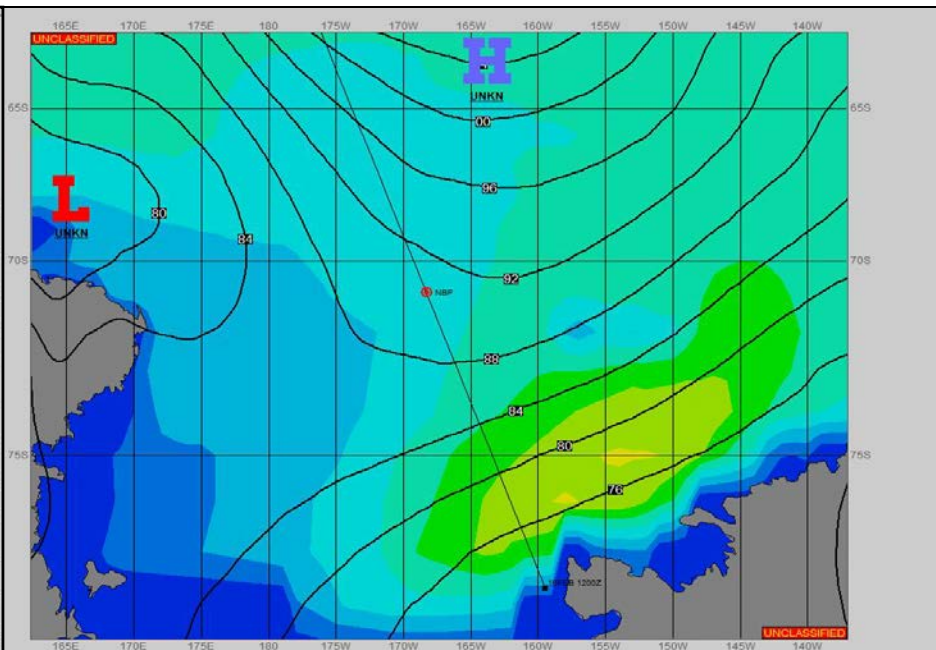
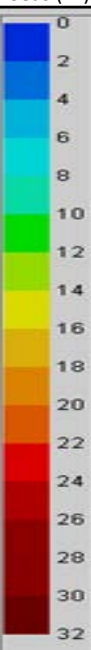
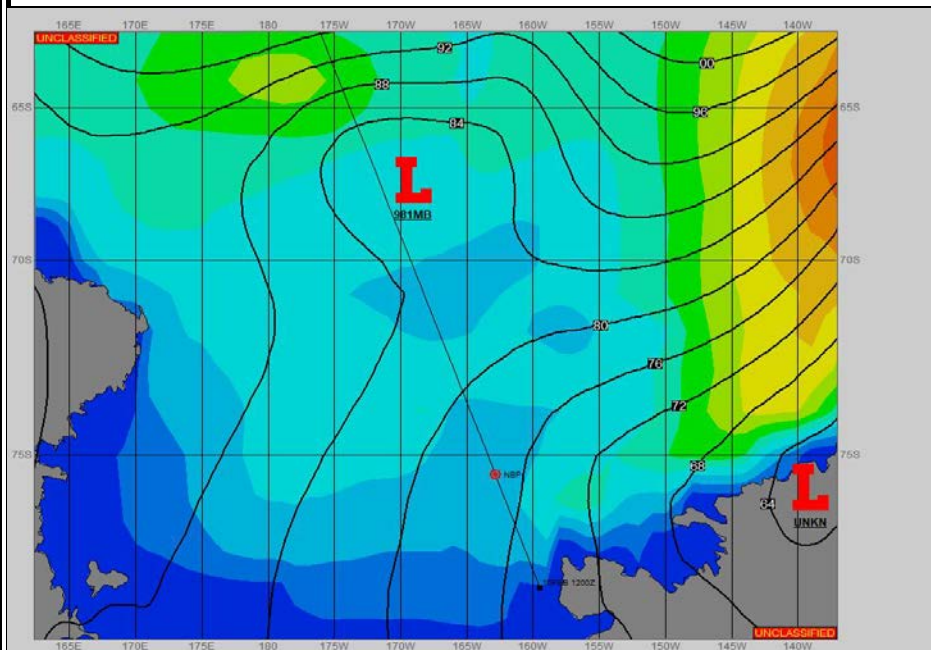


SURFACE ANALYSIS 17-Feb-2023 06Z

Seas (FT)

SURFACE FORECAST 18-Feb-2023 18Z



METSIT 06Z 17-Feb SOUTHWEST GRADIENT TIGHTENS THROUGH 18/0000Z AS A RIDGE OF HIGH PRESSURE BUILDS INTO THE ROSS SEA, PRESSING AGAINST LOW PRESSURE IN WEST ANTARCTICA/EASTERN ROSS ICE SHELF. THE RIDGE AXIS SHOULD BE EAST OF SHIP POSITION BY 18/1800Z, SHIFTING WINDS TO THE NORTHWEST. WIND SPEEDS INCREASE AT THE END OF THE PERIOD AS LOW PRESSURE OFF WILKES COAST TRACKS TO THE SOUTHWEST OF THE FORECAST SHIP POSITION. EXPECT REDUCED VISIBILITY FROM 19/0000Z IN SNOW AND FOG IN CLOSE PROXIMITY TO THE LOW.

FORECASTER NOTES

VALID TIME	17-Feb 12Z	17-Feb 18Z	18-Feb 00Z	18-Feb 06Z	18-Feb 12Z	18-Feb 18Z	19-Feb 00Z	19-Feb 06Z
SKY CONDITION	CLOUDY	CLOUDY	MOSTLY CLOUDY	PARTLY CLOUDY	MOSTLY CLOUDY	MOSTLY CLOUDY	CLOUDY	CLOUDY
WEATHER	SNOW	SNOW	NONE	NONE	NONE	NONE	SNOW & FOG	SNOW & FOG
VISIBILITY (NM)	3 - 5	4 - 6	UNRESTRICTED	UNRESTRICTED	UNRESTRICTED	UNRESTRICTED	1/2 - 1	1/2 - 1
SFC WINDS (DIR & KTS)	SW 20-30	SW 20-25 GUST 35	SW 20-25 GUST 35	SW 20-30	SW 15-20	NW 15-20	NW 15-20	NW 15-20 GUST 25
SFC MAX/MIN (°C)	-3/-7				0/-4			
SST RANGE (°C)	0/-1				0/-1			
SEAS (DIR & FT)	SW 6-8	SW 8-10	SW 9-12	SW 8-10	W 7-9	NW 6-8	NW 6-8	NW 6-8
ICE ACCRETION	HEAVY	HEAVY	MODERATE	MODERATE	LIGHT	NIL	NIL	NIL