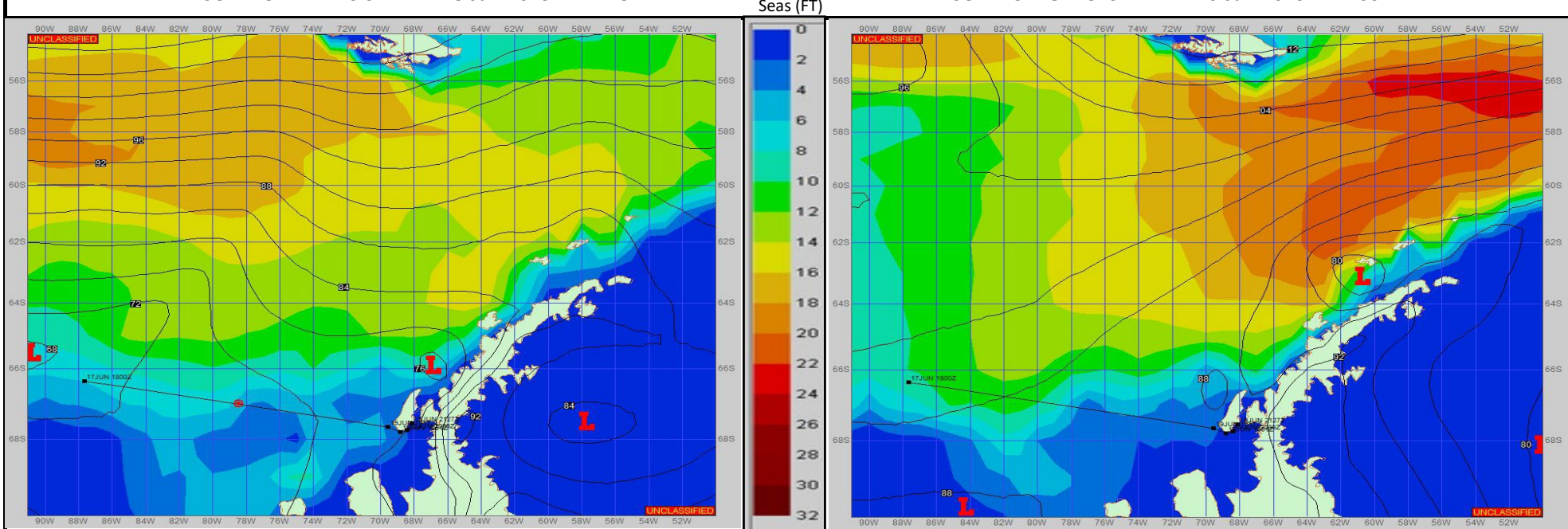


SURFACE ANALYSIS 18-Jun-2023 18Z

SURFACE FORECAST 20-Jun-2023 06Z



METSIT 21Z 18-Jun Welcome to the USAP AOR. FWC-N sent you a "final" WEAX and comparing the 2 WEAXs, they are very similar, but I wanted to send one to ensure a smooth transition with support. An area of low pressure moves east and northeast along the peninsula and continues into the Drake. Strong gusty winds with light to moderate precipitation and reduced visibilities can be expected through the first part of the forecast. High pressure ridging builds in, clearing much of the cloud cover and ending precipitation. Calming sea states can be expected as the low departs. This will be my final forecast with your arrival to Rothera. Will continue w/next MOVREP upon departure from Rothera.

FORECASTER NOTES MCMURDO STATION WINTER OPERATIONS ARE IN EFFECT. WEAX SUPPORT WILL BE DONE BY THE MCMURDO STATION WEATHER OFFICE AND ISSUED BY 2100Z. SEE CONTACT INFO BELOW.

VALID TIME	18-Jun 21Z	19-Jun 06Z	19-Jun 12Z	19-Jun 18Z	20-Jun 00Z	20-Jun 06Z	20-Jun 12Z	20-Jun 18Z
SKY CONDITION	CLOUDY	CLOUDY	CLOUDY	MOSTLY CLOUDY	PARTLY CLOUDY	PARTLY CLOUDY	PARTLY CLOUDY	PARTLY CLOUDY
WEATHER	SNOW	SNOW & FOG	SNOW & FOG	NONE	NONE	NONE	NONE	NONE
VISIBILITY (NM)	2 - 4	1 - 3	1 - 3	UNRESTRICTED	UNRESTRICTED	UNRESTRICTED	UNRESTRICTED	UNRESTRICTED
SFC WINDS (DIR & KTS)	N 10-15 GUST 25	NE 15-20 GUST 30	SE 15-20 GUST 30	NE 15-20 GUST 30	NE 10-15 GUST 20	NE 10-15 GUST 20	NE 5-10	NE 5-10
SFC MAX/MIN (°C)	-2 / -9				-6 / -9			
SST RANGE (°C)	-1 / -2				-1 / -2			
SEAS (DIR & FT)	NW 6-8	NW 6-8	NE 6-8	NE 2-4	NW 0-2	NW 0-2	NW 0-2	NW 0-2
ICE ACCRETION	LIGHT	LIGHT	LIGHT	LIGHT	LIGHT	LIGHT	NIL	NIL