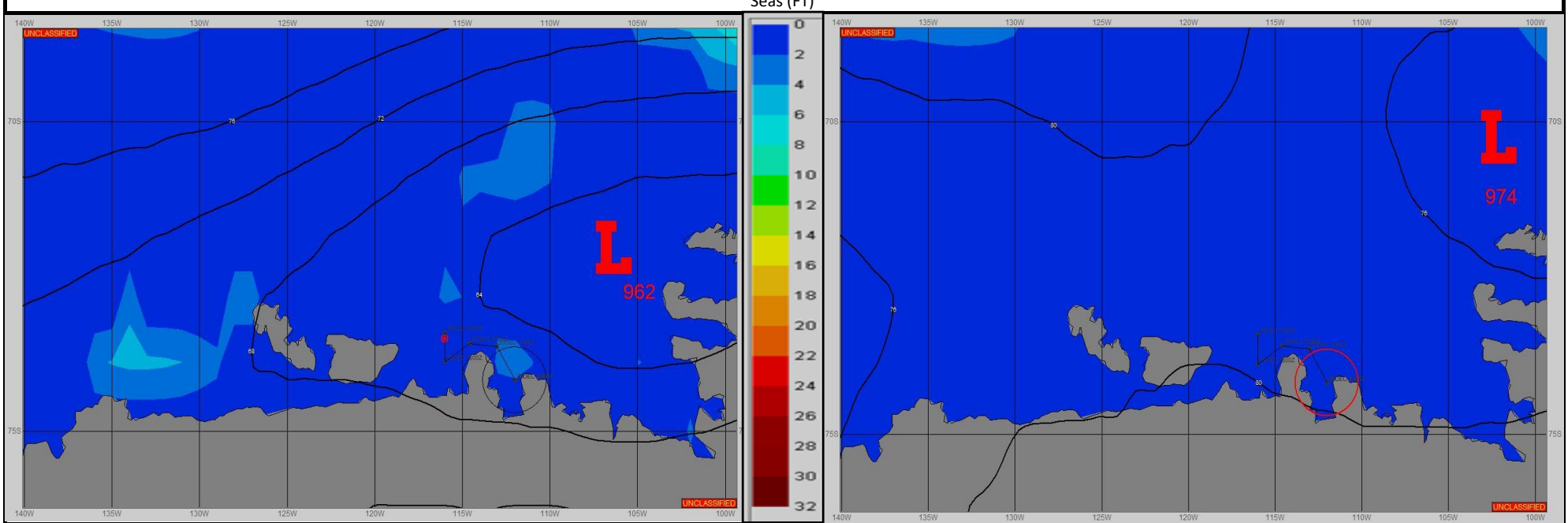


SURFACE ANALYSIS 19-Dec-2023 06Z

SURFACE FORECAST 20-Dec-2023 18Z



METSIT 06Z 19-Dec SHIP POSITIONED SOUTHWEST OF A 962MB LOW NEAR 72S 105W. THE LOW WILL MOVE TO THE EAST-NORTHEAST WITH THE CENTRAL PRESSURE INCREASING TO 974MB NEAR 70S 101W BY 20/1800Z. EXPECT THE GRADIENT TO SLACKEN THROUGH THE PERIOD CAUSING WINDS TO REMAIN LIGHT. STARTING OUT THE VISIBLTY WILL BE RESTRICTED WITH PERIODS OF SNOW AND FOG DUE TO EFFECTS OF THE LOW, AT TIMES LESS THAN 1 MILE. EXPECT IMPROVING VISIBLTY AS SKIES SCATTER OUT WITH CONTINUED LIGHT WINDS AS A COL, OR NEUTRAL POINT BETWEEN LOWS, MOVES INTO THE AREA.

FORECASTER NOTES Winds may differ from those forecast due to funneling/sheltering effects of islands.

VALID TIME	19-Dec 12Z	19-Dec 18Z	20-Dec 00Z	20-Dec 06Z	20-Dec 12Z	20-Dec 18Z	21-Dec 00Z	21-Dec 06Z
SKY CONDITION	CLOUDY	CLOUDY	CLOUDY	MOSTLY CLOUDY	MOSTLY CLOUDY	PARTLY CLOUDY	PARTLY CLOUDY	PARTLY CLOUDY
WEATHER	SNOW & FOG	SNOW & FOG	SNOW & FOG	SNOW & FOG	SNOW & FOG	FOG	FOG	FOG
VISIBILITY (NM)	1 - 3	1/2 - 1	1/2 - 1	1 - 3	2 - 4	3 - 5	2 - 4	3 - 5
SFC WINDS (DIR & KTS)	SE 5-10	VRB 0-5	SE 0-5	SE 5-10	S 5-10	S 0-5	SE 0-5	E 0-5
SFC MAX/MIN (°C)	0/-1				0/-1			
SST RANGE (°C)	-0.5/-1.5				-1.0/-2.0			
SEAS (DIR & FT)	S 0-1	S 0-1	SE 0-1	SE 0-1	S 0-1	E 0-1	E 0-1	E 0-1
ICE ACCRETION	LIGHT	LIGHT	LIGHT	LIGHT	LIGHT	LIGHT	LIGHT	LIGHT