

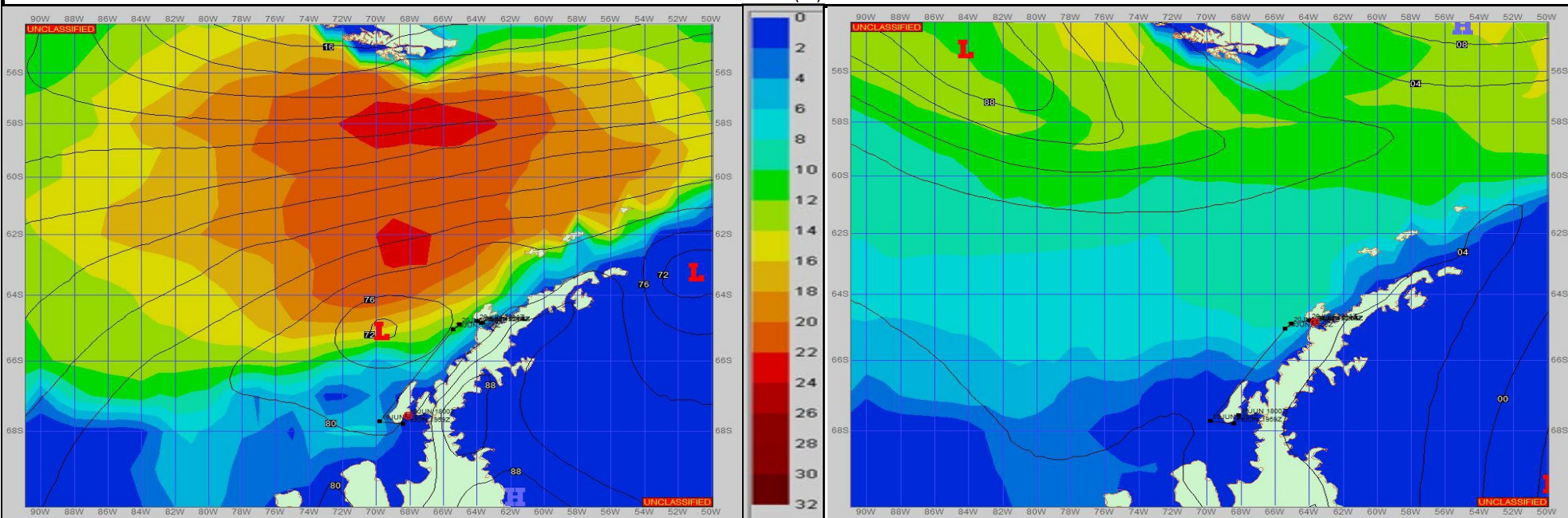
Ref A: 18JUN23 MOVREP

Ref B:

SURFACE ANALYSIS 19-Jun-2023 18Z

SURFACE FORECAST 21-Jun-2023 06Z

Seas (FT)



METSIT 21Z 19-Jun A low pressure system will continue moving to the northeast and out of the area as high pressure starts nudging into the area. This will bring in a lot less clouds and lighter winds. Seas states jump up a bit while transiting in the open waters to the north but will decrease while being sheltered near Anvers Island. Winds may differ from those forecast due to funneling/sheltering effects of islands.

FORECASTER NOTES MCMURDO STATION WINTER OPERATIONS ARE IN EFFECT. WEAX SUPPORT WILL BE DONE BY THE MCMURDO STATION WEATHER OFFICE AND ISSUED BY 2100Z. SEE CONTACT INFO BELOW.

VALID TIME	19-Jun 21Z	20-Jun 06Z	20-Jun 12Z	20-Jun 18Z	21-Jun 00Z	21-Jun 06Z	21-Jun 12Z	21-Jun 18Z
SKY CONDITION	CLOUDY	PARTLY CLOUDY	PARTLY CLOUDY	PARTLY CLOUDY	PARTLY CLOUDY	PARTLY CLOUDY	PARTLY CLOUDY	CLOUDY
WEATHER	SNOW	NONE	NONE	NONE	NONE	NONE	NONE	NONE
VISIBILITY (NM)	2 - 4	UNRESTRICTED	UNRESTRICTED	UNRESTRICTED	UNRESTRICTED	UNRESTRICTED	UNRESTRICTED	UNRESTRICTED
SFC WINDS (DIR & KTS)	W 10-15	WNW 5-10	W 5-10	SW 8-12	W 8-12	W 5-10	W 5-10	W 10-15
SFC MAX/MIN (°C)	-5 / -7				-6 / -8			
SST RANGE (°C)	-1 / -2				-1 / -2			
SEAS (DIR & FT)	NW 0-2	NW 0-2	NW 6-8	NW 6-8	NW 2-4	NW 2-4	NW 0-2	NW 0-2
ICE ACCRETION	LIGHT	LIGHT	LIGHT	LIGHT	LIGHT	LIGHT	LIGHT	LIGHT