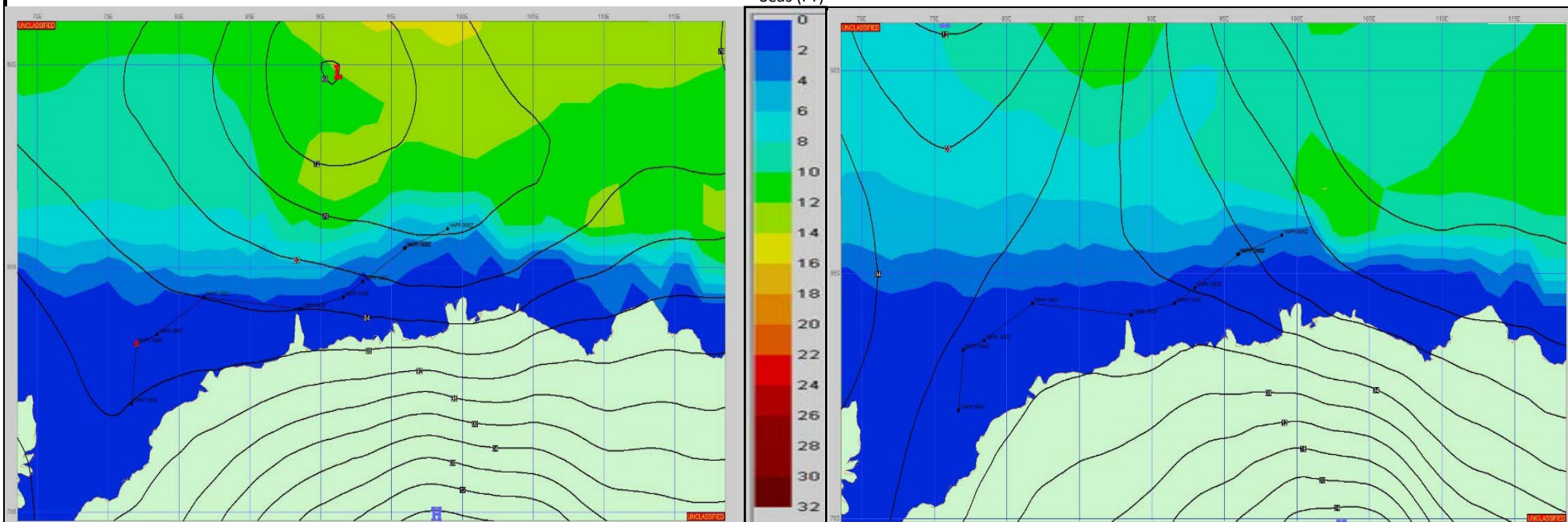


SURFACE ANALYSIS 20-Apr-2023 18Z

SURFACE FORECAST 22-Apr-2023 06Z



METSIT 21Z 20-Apr The low pressure system fills over the forecast period, easing the pressure gradient resulting in generally decent conditions in the science area.

FORECASTER NOTES MCMURDO STATION WINTER OPERATIONS ARE IN EFFECT. WEAX SUPPORT WILL BE DONE BY THE MCMURDO STATION WEATHER OFFICE AND ISSUED BY 2100Z. SEE CONTACT INFO BELOW.

VALID TIME	20-Apr 21Z	21-Apr 06Z	21-Apr 12Z	21-Apr 18Z	22-Apr 00Z	22-Apr 06Z	22-Apr 12Z	22-Apr 18Z
SKY CONDITION	MOSTLY CLOUDY	PARTLY CLOUDY	PARTLY CLOUDY	PARTLY CLOUDY	PARTLY CLOUDY	PARTLY CLOUDY	PARTLY CLOUDY	MOSTLY CLOUDY
WEATHER	NONE	NONE	NONE	NONE	NONE	NONE	NONE	NONE
VISIBILITY (NM)	UNRESTRICTED	UNRESTRICTED	4 - 6	UNRESTRICTED	UNRESTRICTED	4 - 6	4 - 6	UNRESTRICTED
SFC WINDS (DIR & KTS)	SE 10-15	S 10-15	S 10-15	SW 10-15	SW 10-15	SW 10-15	SW 10-15	SW 10-15
SFC MAX/MIN (°C)	-2 / -6				-2 / -8			
SST RANGE (°C)	-1 / -2				-1 / -2			
SEAS (DIR & FT)	W 2-4	W 2-4	W 2-4	W 2-4	W 2-4	W 2-4	W 2-4	W 2-4
ICE ACCRETION	LIGHT	LIGHT	LIGHT	LIGHT	LIGHT	LIGHT	LIGHT	LIGHT