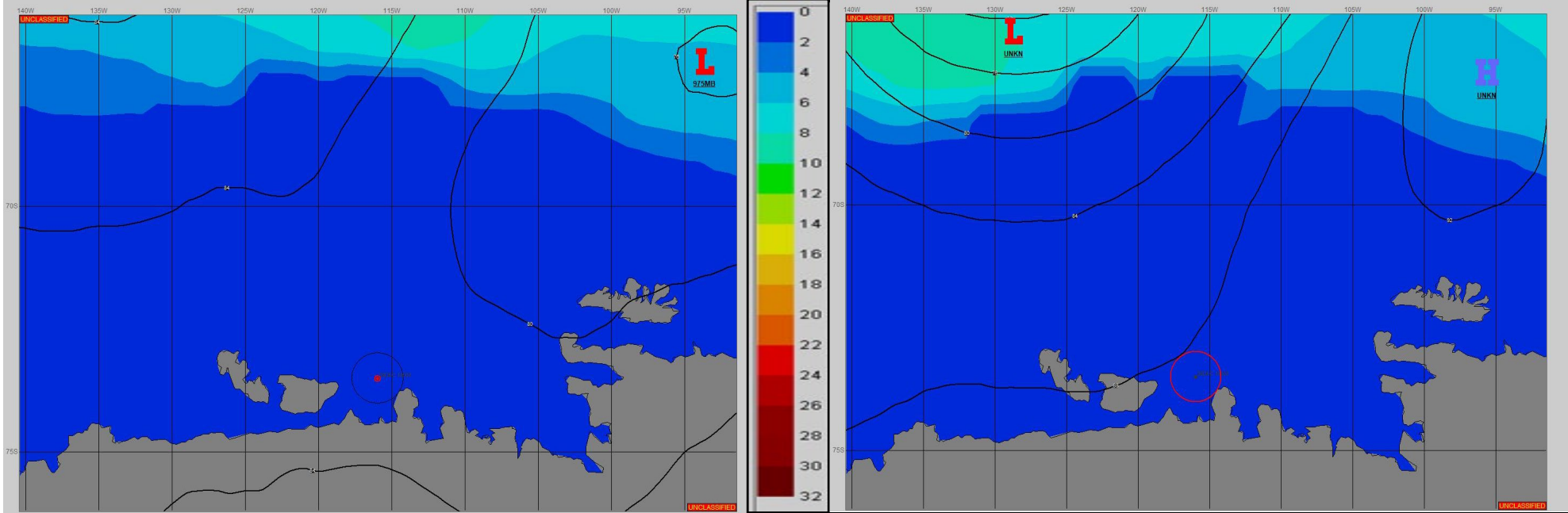


SURFACE ANALYSIS 21-Dec-2023 06Z

SURFACE FORECAST 22-Dec-2023 18Z



METSIT 06Z 21-Dec AREA IN A COL WITH LOW PRESSURE TO THE NORTHEAST MOVING EAST, AND HIGH PRESSURE RIDGING FROM THE CONTINENT. EXPECT BENIGN WEATHER CONDITIONS WITH PERIODS OF REDUCED VISIBILITY IN FOG. A 966MB LOW NEAR 59S 140W WILL MOVE SOUTHEAST AND DEEPEN TO 965MB NEAR 62S 127W INCREASING THE PRESSURE GRADIENT FROM THE NORTHEAST FOR WIND SPEEDS IN THE 10-15 KNOT RANGE BY THE END OF THE FORECAST PERIOD.

FORECASTER NOTES

VALID TIME	21-Dec 12Z	21-Dec 18Z	22-Dec 00Z	22-Dec 06Z	22-Dec 12Z	22-Dec 18Z	23-Dec 00Z	23-Dec 06Z
SKY CONDITION	CLOUDY	CLOUDY	MOSTLY CLOUDY	CLOUDY	CLOUDY	CLOUDY	CLOUDY	CLOUDY
WEATHER	NONE	NONE	FOG	FOG	FOG	FOG	NONE	NONE
VISIBILITY (NM)	UNRESTRICTED	UNRESTRICTED	1 - 3	1/2 - 1	1/2 - 1	1 - 3	UNRESTRICTED	UNRESTRICTED
SFC WINDS (DIR & KTS)	VRB03	VRB05	NE 5-10	NE 5	NE 5-10	NE 5-10	NE 5-10	NE 10-15
SFC MAX/MIN (°C)	-1/-3				-1/-3			
SST RANGE (°C)	0/-1				0/-1			
SEAS (DIR & FT)	NE 0-1	NE 0-1	NE 0-1	NE 0-1	NE 0-1	N 0-1	N 0-1	N 0-1
ICE ACCRETION	LIGHT	LIGHT	LIGHT	LIGHT	LIGHT	LIGHT	LIGHT	LIGHT