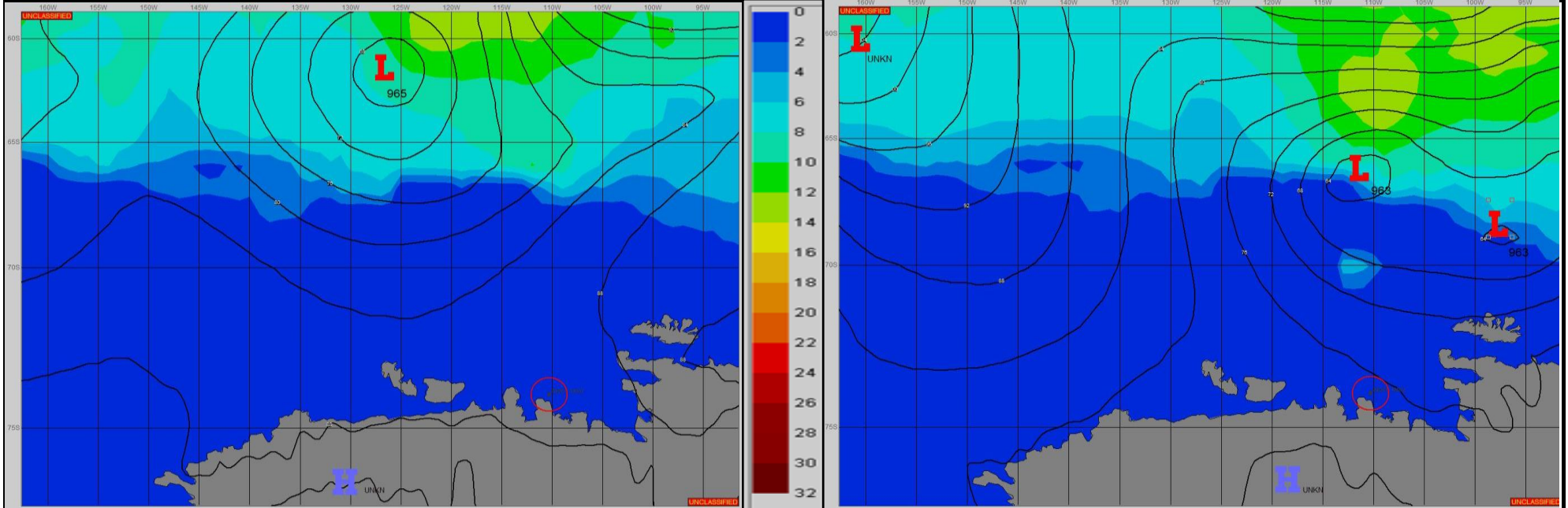


SURFACE ANALYSIS 23-Dec-2023 06Z

Seas (FT)

SURFACE FORECAST 24-Dec-2023 18Z



METSIT 06Z 23-Dec A 965MB LOW PRESSURE CENTER PASSES FROM NW OF POSITION TO NE AND SPLITS APART INTO 2 LOW PRESSURE CENTERS. EXPECT TO TRANSITION FROM COL AREA TO WEAK GRADIENT EFFECTS OF THE LOW THROUGH THE PERIOD AS WINDS GRADUALLY INCREASE AND SHIFT FROM NORTHEAST TO EAST TO SOUTHEAST. INDICATIONS ARE FOR PERIODS OF REDUCED VISIBILITY IN FOG WITH OCCASIONAL PERIODS OF VISIBILITY DROPPING BETWEEN 1-3 MILES BECOMING UNRESTRICTED BY END OF THE FORECAST PERIOD AS HIGH PRESSURE BUILDS IN FROM THE SOUTH. EXPECT TEMPERATURES TO TREND SLIGHTLY COLDER.

FORECASTER NOTES Winds may differ from those forecast due to funneling/sheltering effects of islands.

VALID TIME	23-Dec 12Z	23-Dec 18Z	24-Dec 00Z	24-Dec 06Z	24-Dec 12Z	24-Dec 18Z	25-Dec 00Z	25-Dec 06Z
SKY CONDITION	CLOUDY	MOSTLY CLOUDY	CLOUDY	CLOUDY	MOSTLY CLOUDY	PARTLY CLOUDY	PARTLY CLOUDY	PARTLY CLOUDY
WEATHER	FOG	FOG	FOG	FOG	FOG	FOG	NONE	NONE
VISIBILITY (NM)	1 - 3	2 - 4	3 - 5	1 - 3	2 - 4	3 - 5	UNRESTRICTED	UNRESTRICTED
SFC WINDS (DIR & KTS)	NE 5	VRB03	E 5	E 5-10	SE 5-10	SE 5-10	SE 5-10	VRB05
SFC MAX/MIN (°C)	-1/-2				-1/-3			
SST RANGE (°C)	0.5/-1.5				-1/-2			
SEAS (DIR & FT)	N 0-1	N 0-1	N 0-1	N 0-1	NE 0-1	NE 0-1	NE 0-1	N 0-1
ICE ACCRETION	LIGHT	LIGHT	LIGHT	LIGHT	LIGHT	LIGHT	LIGHT	LIGHT