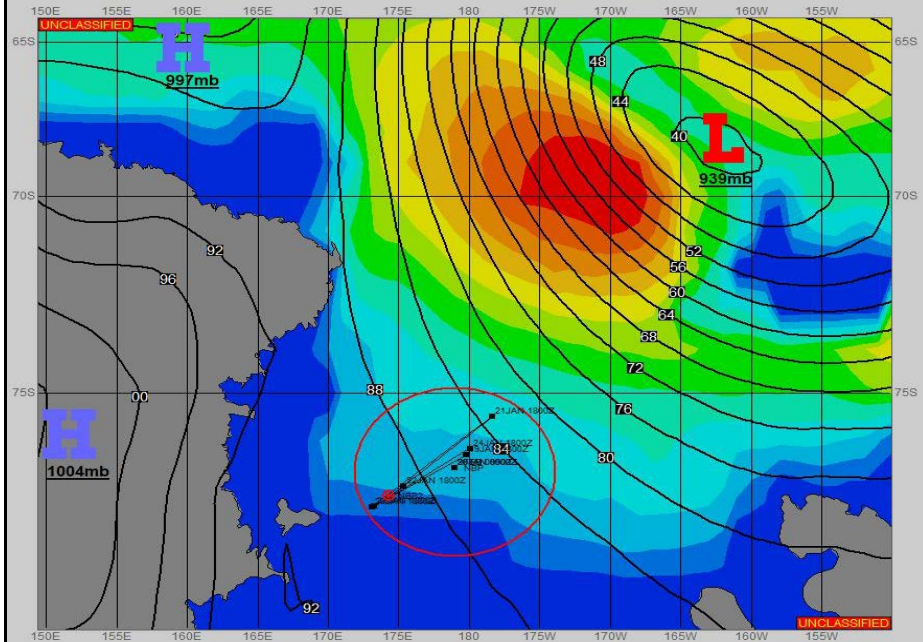
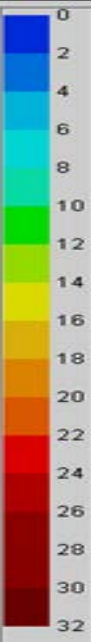


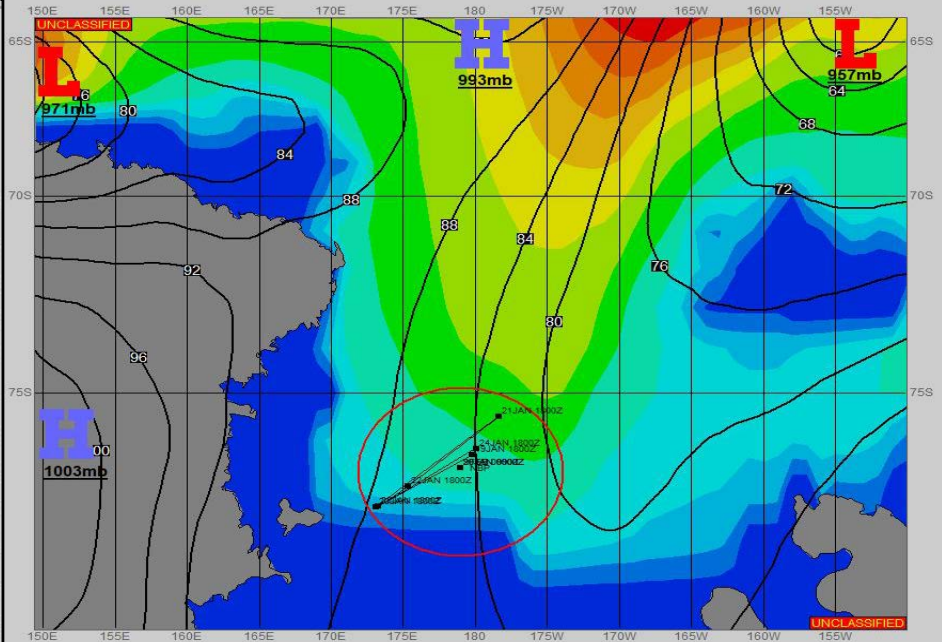
**SURFACE ANALYSIS 23-Jan-2023 06Z**



Seas (FT)



**SURFACE FORECAST 24-Jan-2023 18Z**



**METSIT 06Z 23-Jan** A DEEP LOW PRESSURE CENTER IN THE NORTHERN ROSS SEA IS SLOWLY WEAKENING AND DRIFTING OFF TO THE EAST. MODERATE WINDS WILL CONTINUE TO PERSIST ACROSS THE ROSS SEA REGION, MAKING FOR MODERATE SWELLS OVERNIGHT TONIGHT. CLOUD COVER WILL ALSO REMAIN IN PLACE, WITH HEAVIER SNOW AND FOG TO START TODAY OFF, TRANSITIONING TO LIGHTER SNOW AND UNRESTRICTED VIS BY TONIGHT. BY TOMORROW, THE LOW WILL HAVE MOVED ON, THOUGH ITS INFLUENCE WILL LINGER AS CONDITIONS SLOWLY IMPROVE.

**FORECASTER NOTES**

| VALID TIME            | 23-Jan 12Z    | 23-Jan 18Z    | 24-Jan 00Z    | 24-Jan 06Z   | 24-Jan 12Z   | 24-Jan 18Z   | 25-Jan 00Z    | 25-Jan 06Z    |
|-----------------------|---------------|---------------|---------------|--------------|--------------|--------------|---------------|---------------|
| SKY CONDITION         | MOSTLY CLOUDY | MOSTLY CLOUDY | MOSTLY CLOUDY | CLOUDY       | CLOUDY       | CLOUDY       | MOSTLY CLOUDY | MOSTLY CLOUDY |
| WEATHER               | SNOW & FOG    | SNOW & FOG    | SNOW & FOG    | SNOW         | SNOW         | SNOW         | SNOW          | SNOW          |
| VISIBILITY (NM)       | <1/2          | <1/2          | 3 - 5         | UNRESTRICTED | UNRESTRICTED | UNRESTRICTED | UNRESTRICTED  | UNRESTRICTED  |
| SFC WINDS (DIR & KTS) | S 15-20       | S 15-20       | S 20-25       | S 20-25      | S 20-25      | S 15-20      | S 15-20       | S 15-20       |
| SFC MAX/MIN (°C)      | -6/-13        |               |               |              | -4/-6        |              |               |               |
| SST RANGE (°C)        | 1/-1          |               |               |              | 1/-1         |              |               |               |
| SEAS (DIR & FT)       | SE 3-5        | E 2-4         | SE 4-6        | SE 6-8       | E 8-10       | E 8-10       | SE 6-8        | SE 5-7        |
| ICE ACCRETION         | MODERATE      | MODERATE      | MODERATE      | MODERATE     | MODERATE     | MODERATE     | MODERATE      | MODERATE      |