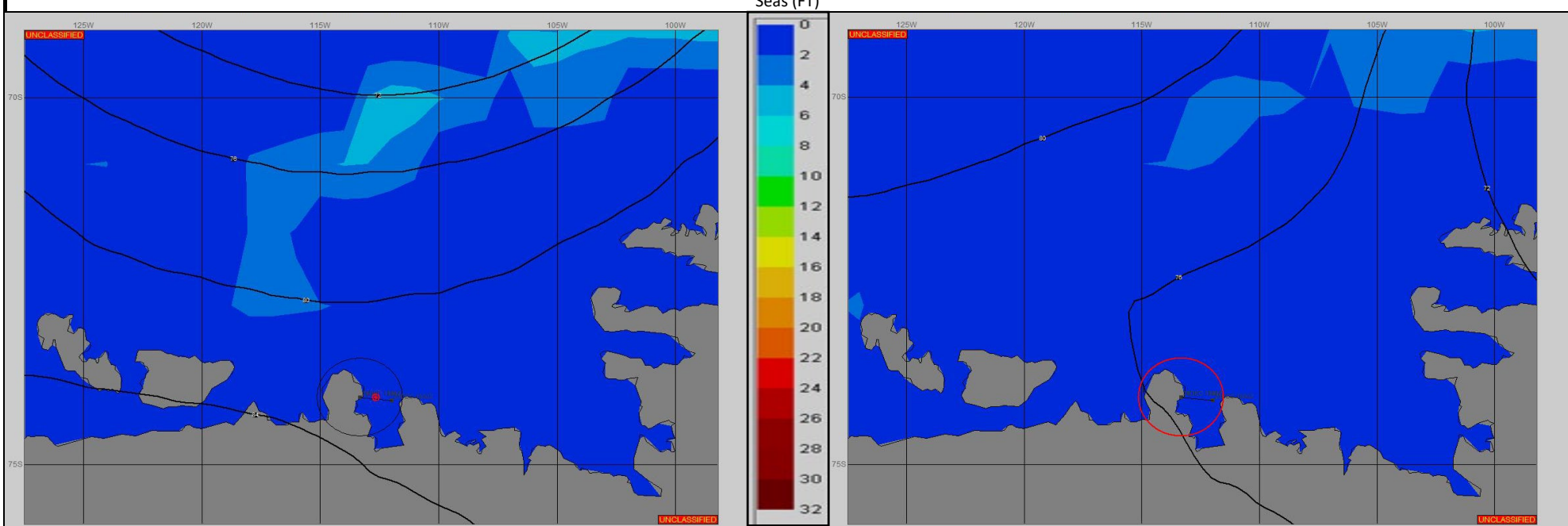


SURFACE ANALYSIS 24-Dec-2023 06Z

SURFACE FORECAST 25-Dec-2023 18Z



METSIT 06Z 24-Dec A 963MB LOW NEAR 66S 113W DROPPING SOUTHEAST INTO THE BELLINGHAUSEN SEA WILL BUMP THE WIND INTO THE 10-15 KNOT RANGE EARLY WITH LITTLE OTHER ASSOCIATED WEATHER. THE OPERATIONS AREA WILL BENEFIT FROM LIGHT, DRY OFF-CONTINENT FLOW WITH NEAR PRISTINE CONDITIONS UNDER FAIR SKIES WITH UNRESTRICTED VISIBILITY.

FORECASTER NOTES Winds may differ from those forecast due to funneling/sheltering effects of islands.

| VALID TIME | 24-Dec 12Z | 24-Dec 18Z | 25-Dec 00Z | 25-Dec 06Z | 25-Dec 12Z | 25-Dec 18Z | 26-Dec 00Z | 26-Dec 06Z |
|-----------------------|---------------|---------------|--------------|--------------|---------------|---------------|--------------|--------------|
| SKY CONDITION | MOSTLY CLOUDY | MOSTLY CLOUDY | CLEAR | CLEAR | MOSTLY CLOUDY | PARTLY CLOUDY | CLEAR | CLEAR |
| WEATHER | NONE | NONE | NONE | NONE | NONE | NONE | NONE | NONE |
| VISIBILITY (NM) | UNRESTRICTED | UNRESTRICTED | UNRESTRICTED | UNRESTRICTED | UNRESTRICTED | UNRESTRICTED | UNRESTRICTED | UNRESTRICTED |
| SFC WINDS (DIR & KTS) | S 5-10 | S 10-15 | S 10-15 | S 5-10 | S 5 | S 5 | S 5 | S 5 |
| SFC MAX/MIN (°C) | -1/-3 | | | | -1/-3 | | | |
| SST RANGE (°C) | 0/-1 | | | | 0/-1 | | | |
| SEAS (DIR & FT) | E 0-1 | SE 0-1 | SE 0-1 | SE 0-1 | SE 0-1 | SE 0-1 | SE 0-1 | SE 0-1 |
| ICE ACCRETION | LIGHT | LIGHT | LIGHT | LIGHT | LIGHT | LIGHT | LIGHT | LIGHT |