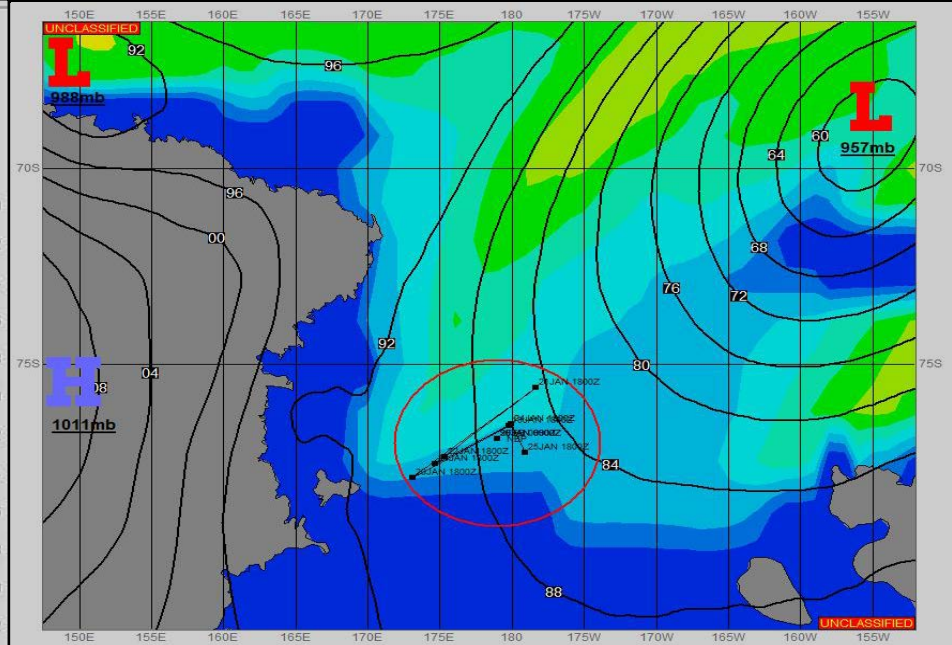
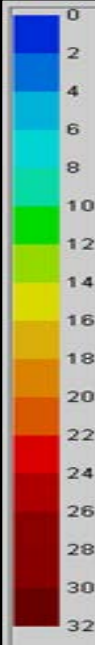
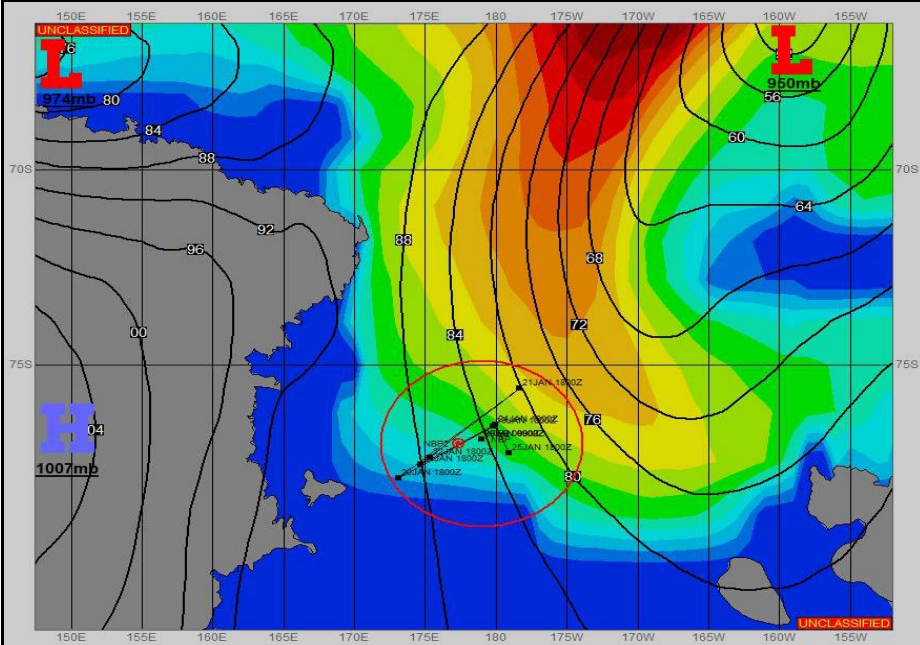


**SURFACE ANALYSIS 24-Jan-2023 06Z**

Seas (FT)

**SURFACE FORECAST 25-Jan-2023 18Z**



**METSIT 06Z 24-Jan** A STRONG, BROAD LOW PRESSURE SYSTEM WELL TO NORTH IS CONTINUING ITS EASTWARD TRACK. THIS IS LEAVING THE ROSS SEA OVERRUN WITH MODERATE SOUTHERLY WINDS, AND SIMILARLY MODERATE SWELL HEIGHTS. CLOUDINESS ALSO DOMINATES THE ENTIRE AREA, WITH SNOW SHOWERS AND FOG REDUCING VIS AT TIMES. AS THE LOW MOVES ON, THE WINDS AND SWELL HEIGHTS WILL RELAX TOMORROW, BUT THE CLOUDS, SNOW, AND FOG WILL LINGER.

**FORECASTER NOTES**

VALID TIME	24-Jan 12Z	24-Jan 18Z	25-Jan 00Z	25-Jan 06Z	25-Jan 12Z	25-Jan 18Z	26-Jan 00Z	26-Jan 06Z
SKY CONDITION	CLOUDY	CLOUDY	MOSTLY CLOUDY	CLOUDY	MOSTLY CLOUDY	MOSTLY CLOUDY	MOSTLY CLOUDY	CLOUDY
WEATHER	FOG	SNOW & FOG	SNOW & FOG	SNOW & FOG	SNOW & FOG	SNOW & FOG	SNOW & FOG	SNOW & FOG
VISIBILITY (NM)	1/2 - 1	<1/2	<1/2	<1/2	<1/2	<1/2	<1/2	<1/2
SFC WINDS (DIR & KTS)	S 20-25 GUST 30	S 20-25 GUST 30	S 20-25	S 15-20	S 15-20	S 15-20	S 15-20	S 10-15
SFC MAX/MIN (°C)	-4/-7				-1/-6			
SST RANGE (°C)	1/-1				0/-1			
SEAS (DIR & FT)	SE 9-12	SE 9-12	SE 7-9	SE 5-7	SE 4-6	SE 4-6	SE 4-6	SE 4-6
ICE ACCRETION	MODERATE	MODERATE	MODERATE	MODERATE	MODERATE	MODERATE	MODERATE	MODERATE