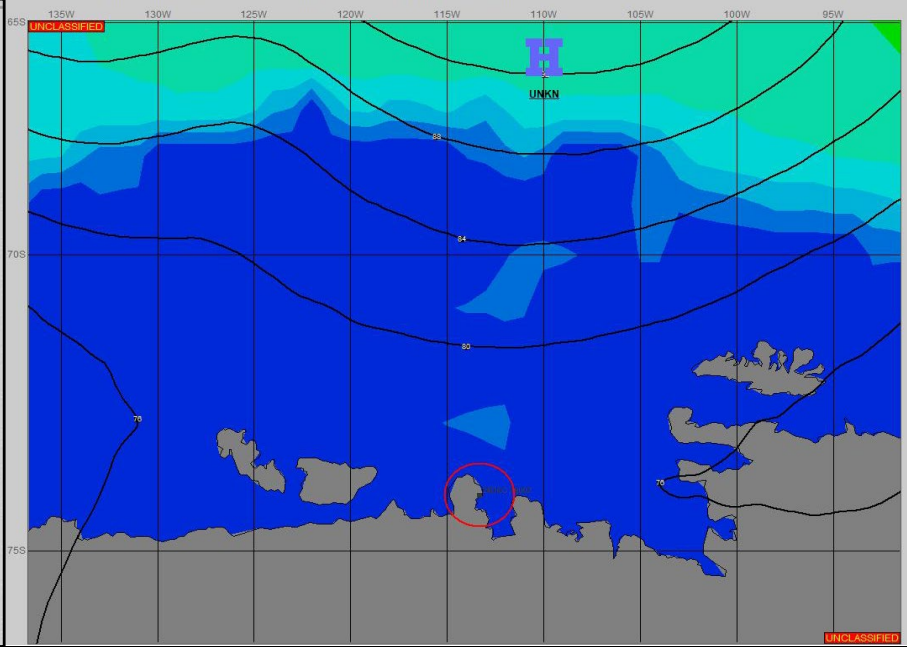
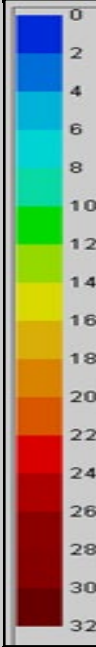
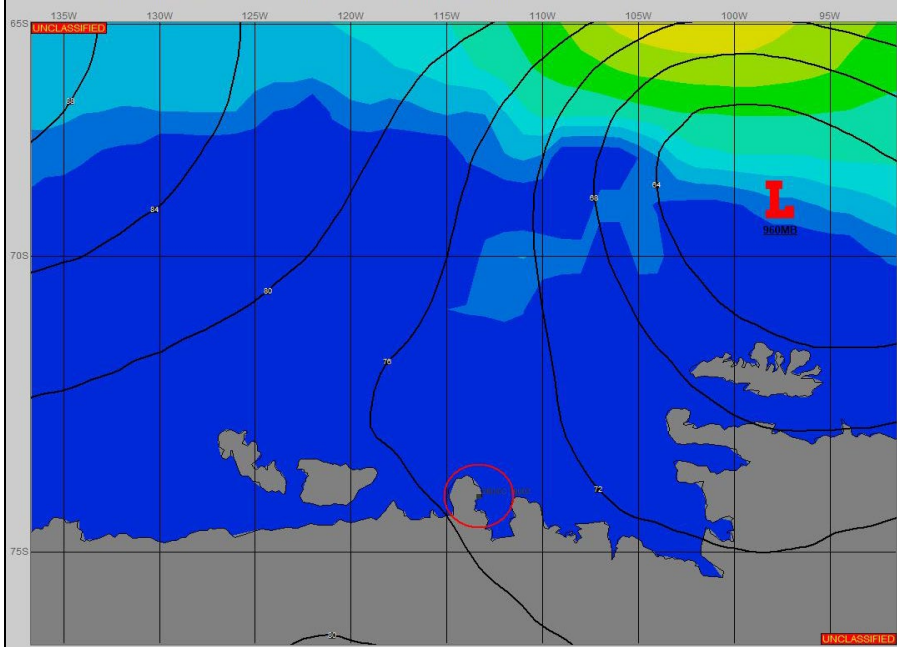


SURFACE ANALYSIS 25-Dec-2023 06Z

Seas (FT)

SURFACE FORECAST 26-Dec-2023 18Z



METSIT 06Z 25-Dec A 960MB LOW NEAR 69S 098W MOVES EAST. WINDS EASE AND MILD CONDITIONS CONTINUE AS THE OPERATIONS AREA SETTLES INTO A COL AREA WITH A LIGHT, DRY CONTINENTAL INFLUENCE.

FORECASTER NOTES Winds may differ from those forecast due to funneling/sheltering effects of islands.

VALID TIME	25-Dec 12Z	25-Dec 18Z	26-Dec 00Z	26-Dec 06Z	26-Dec 12Z	26-Dec 18Z	27-Dec 00Z	27-Dec 06Z
SKY CONDITION	PARTLY CLOUDY	PARTLY CLOUDY	PARTLY CLOUDY	PARTLY CLOUDY	PARTLY CLOUDY	PARTLY CLOUDY	PARTLY CLOUDY	PARTLY CLOUDY
WEATHER	NONE	NONE	NONE	NONE	NONE	NONE	NONE	NONE
VISIBILITY (NM)	UNRESTRICTED	UNRESTRICTED	UNRESTRICTED	UNRESTRICTED	UNRESTRICTED	UNRESTRICTED	UNRESTRICTED	UNRESTRICTED
SFC WINDS (DIR & KTS)	SW 5-10	SW 5	S 5	S 5	S 5	SW 5	S 5	S 5
SFC MAX/MIN (°C)	-1/-4				-1/-5			
SST RANGE (°C)	-0.5/-1.5				0/-1			
SEAS (DIR & FT)	SE 0-1	SE 0-1	SE 0-1	NW 0-1	NW 0-1	NW 0-1	NW 0-1	NW 0-1
ICE ACCRETION	LIGHT	LIGHT	LIGHT	LIGHT	LIGHT	LIGHT	LIGHT	LIGHT