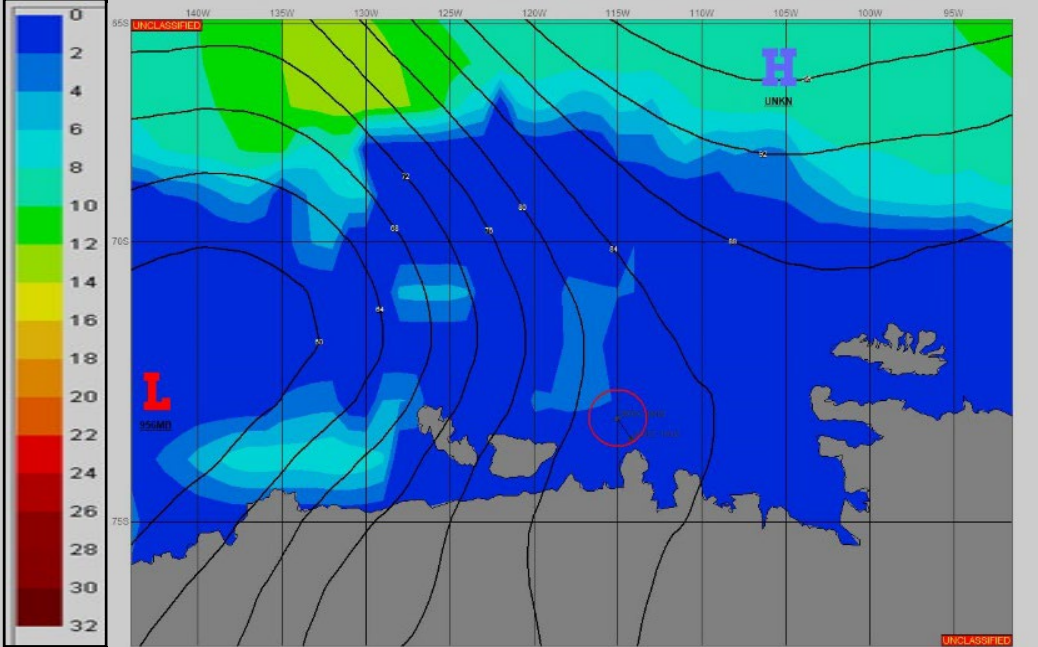
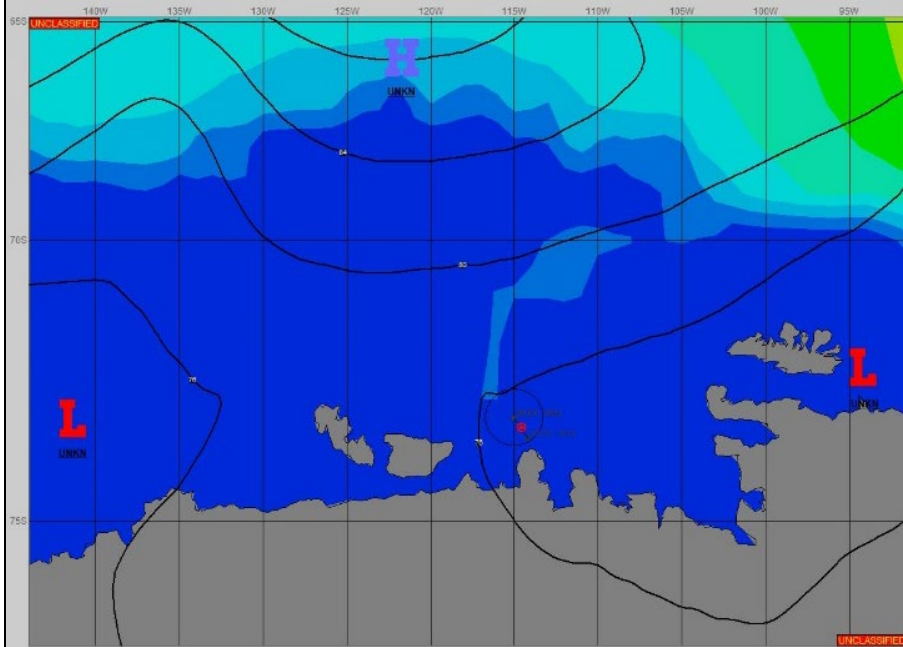


SURFACE ANALYSIS 26-Dec-2023 06Z

Seas (FT)

SURFACE FORECAST 27-Dec-2023 18Z



METSIT 06Z 26-Dec MILD CONDITIONS CONTINUE EARLY WITH A MODERATE WEST BREEZE. WARM FRONTAL TYPE WEATHER WILL MOVE INTO THE AREA FROM APPROXIMATELY 27/0600Z WITH REDUCTIONS TO VISIBILITY IN FOG. BY 27/1800Z, EXPECT FREQUENT PERIODS OF VISIBILITY LESS THAN 1/2 MILE IN SNOW AND FOG WITH STRONG TO NEAR GALE WINDS OFF A 956MB LOW OFF THE NORTHEAST MARIE BYRD LAND COAST NEAR 73S 144W.

FORECASTER NOTES Winds may differ from those forecast due to funneling/sheltering effects of islands.

VALID TIME	26-Dec 12Z	26-Dec 18Z	27-Dec 00Z	27-Dec 06Z	27-Dec 12Z	27-Dec 18Z	28-Dec 00Z	28-Dec 06Z
SKY CONDITION	MOSTLY CLOUDY	MOSTLY CLOUDY	MOSTLY CLOUDY	MOSTLY CLOUDY	MOSTLY CLOUDY	CLOUDY	CLOUDY	CLOUDY
WEATHER	NONE	NONE	NONE	FOG	FOG	SNOW & FOG	SNOW & FOG	SNOW & FOG
VISIBILITY (NM)	UNRESTRICTED	UNRESTRICTED	UNRESTRICTED	1 - 3	2 - 4	1/2 - 1	<1/2	1 - 3
SFC WINDS (DIR & KTS)	W 10-15	W 15-20	WSW 10-15	WNW 10-15	NW 10-15	NE 15-20 GUST 25	NE 20-25 GUST 35	NW 15-20 GUST 25
SFC MAX/MIN (°C)	0/-3				0/-3			
SST RANGE (°C)	0/-1				0/-1			
SEAS (DIR & FT)	NW 1-3	WNW 1-3	NW 1-3	NW 1-3	NW 1-3	N 1-3	NNE 2-4	WNW 3-5
ICE ACCRETION	LIGHT	LIGHT	LIGHT	LIGHT	LIGHT	LIGHT	LIGHT	LIGHT