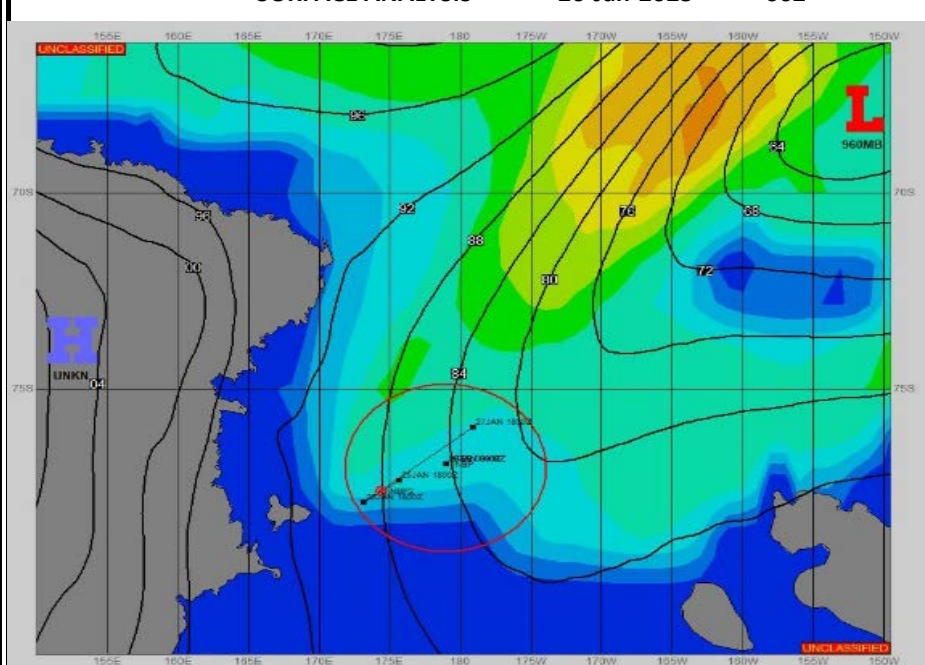
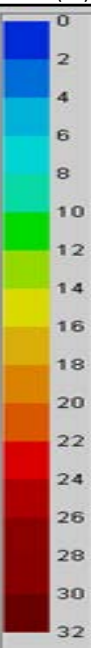


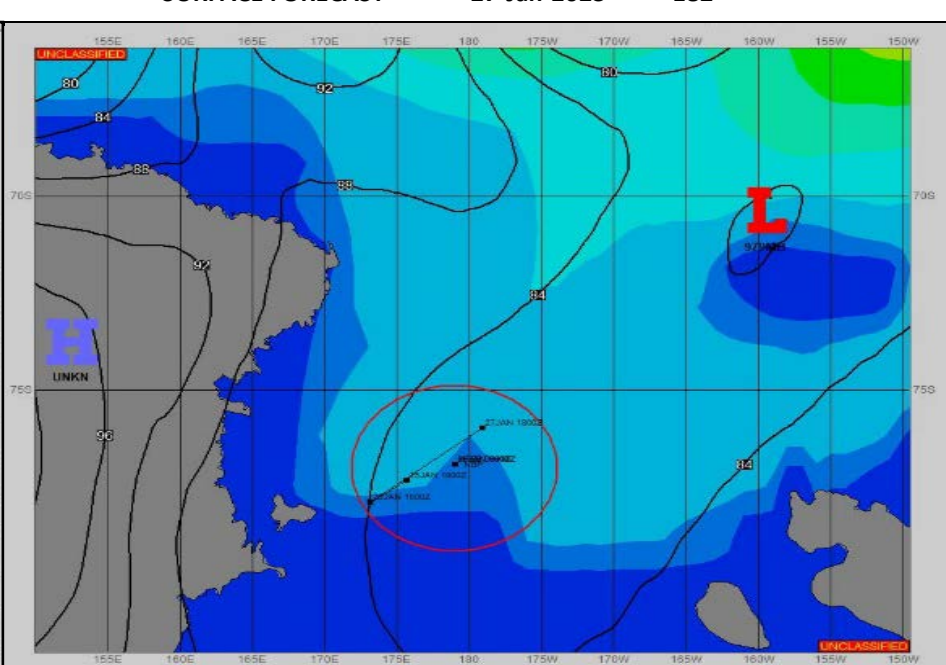
SURFACE ANALYSIS 26-Jan-2023 06Z



Seas (FT)



SURFACE FORECAST 27-Jan-2023 18Z



METSIT 06Z 26-Jan 960MB LOW NEAR 67S 150W WILL MOVE WAVES OF LOW PRESSURE INTO THE BASE OF THE TROUGH AND INTO THE OPERATING AREA BRINGING HIGHER WINDS AND REDUCED VISIBILITY IN SNOW THROUGH APPROXIMATELY 26/2100Z. CONDITIONS SHOULD BEGIN TO CALM AND WARM UP FROM 27/0000Z AS THE LOW FILLS AND MOVES NORTHEAST, LOOSENING THE PRESSURE GRADIENT AND THE EFFECTS OF THE TROUGH ACROSS THE CENTRAL ROSS SEA.

FORECASTER NOTES

VALID TIME	26-Jan 12Z	26-Jan 18Z	27-Jan 00Z	27-Jan 06Z	27-Jan 12Z	27-Jan 18Z	28-Jan 00Z	28-Jan 06Z
SKY CONDITION	CLOUDY	CLOUDY	CLOUDY	CLOUDY	CLOUDY	CLOUDY	CLOUDY	CLOUDY
WEATHER	SNOW & FOG	SNOW & FOG	FOG	FOG	NONE	NONE	NONE	NONE
VISIBILITY (NM)	1 - 3	1 - 3	3 - 5	4 - 6	UNRESTRICTED	UNRESTRICTED	UNRESTRICTED	UNRESTRICTED
SFC WINDS (DIR & KTS)	SW 30-35 GUST 45	SW 25-30 GUST 35	SW 15-20	SW 10-15	SW 5	SW 5-10	SW 10-15	SW 15-20
SFC MAX/MIN (°C)	-2/-7				-1/-3			
SST RANGE (°C)	0/-1				0/-1			
SEAS (DIR & FT)	SW 5-7	S 4-6	SE 8-10	E 5-7	SE 4-6	E 3-5	SE 3-5	SE 3-5
ICE ACCRETION	HEAVY	HEAVY	MODERATE	LIGHT	NIL	NIL	NIL	LIGHT