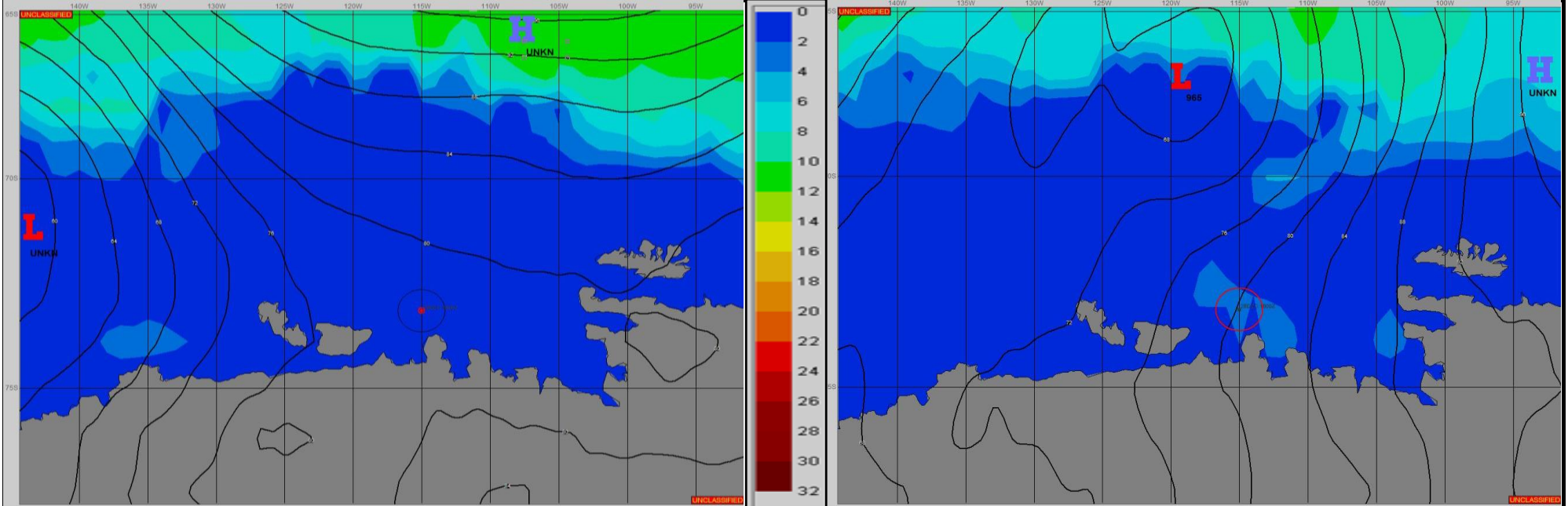


SURFACE ANALYSIS 27-Dec-2023 06Z

Seas (FT)

SURFACE FORECAST 28-Dec-2023 18Z



METSIT 06Z 27-Dec A LOW PRESSURE SYSTEM MOVES IN FROM THE WEST WITH CENTER PASSING TO NORTH OF POSITION THROUGH THE FORECAST PERIOD. INDICATIONS ARE FOR WARM FRONTAL TYPE WEATHER WITH REDUCTIONS TO VISIBILITY IN FOG INITIALLY FOLLOWED BY FREQUENT PERIODS OF VISIBILITY LESS THAN 1/2 MILE IN SNOW AND FOG BECMG SNOW/RAIN MIXED AND FOG BY 28/06Z AS THE LOW CENTER TRACKS EAST-NORTHEASTWARD. EXPECT STRONG TO NEAR GALE WINDS AS THE 965MB LOW TIGHTENS THE PRESSURE GRADIENT PASSING NEAR 68S 123W AT 28/18Z.

FORECASTER NOTES Winds may differ from those forecast due to funneling/sheltering effects of islands.

VALID TIME	27-Dec 12Z	27-Dec 18Z	28-Dec 00Z	28-Dec 06Z	28-Dec 12Z	28-Dec 18Z	29-Dec 00Z	29-Dec 06Z
SKY CONDITION	CLOUDY	CLOUDY	CLOUDY	CLOUDY	CLOUDY	CLOUDY	CLOUDY	CLOUDY
WEATHER	FOG	SNOW & FOG	SNOW & FOG	MIXED & FOG	MIXED & FOG	FOG	MIXED & FOG	MIXED & FOG
VISIBILITY (NM)	1 - 3	1/2 - 1	<1/2	1/2 - 1	1/2 - 1	1/2 - 1	1/2 - 1	<1/2
SFC WINDS (DIR & KTS)	NW 5-10 GUST 15	NNE 15-20 GUST 25	NNE 20-25 GUST 35	N 15-20 GUST 25	N 15-20 GUST 25	NNE 15-20 GUST 25	ENE 20-25 GUST 35	E 25-30 GUST 35
SFC MAX/MIN (°C)	0/-1.5				0/-1			
SST RANGE (°C)	0/-1				0/-1			
SEAS (DIR & FT)	NW 1-2	N 1-3	N 2-4	NW 2-4	NW 2-4	N 1-3	NE 2-4	E 3-5
ICE ACCRETION	LIGHT	LIGHT	LIGHT	LIGHT	LIGHT	LIGHT	LIGHT	LIGHT