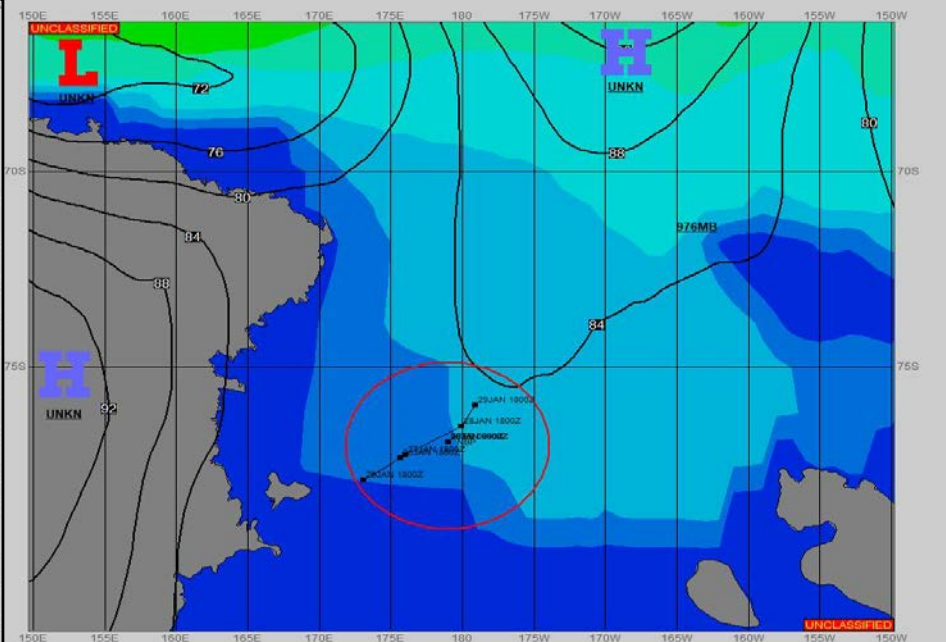
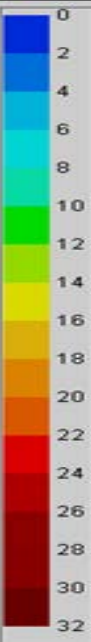
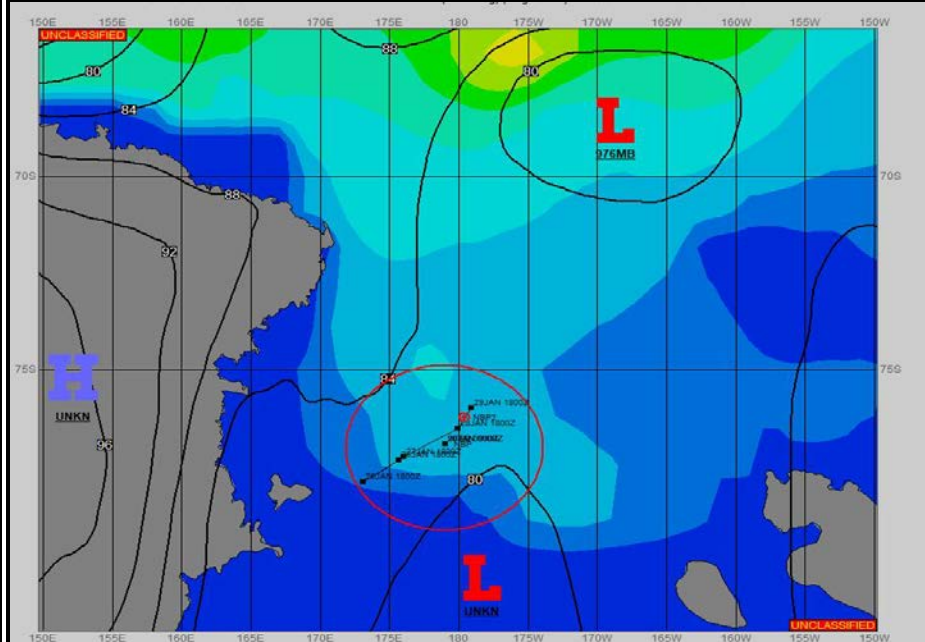


SURFACE ANALYSIS 29-Jan-2023 06Z

Seas (FT)

SURFACE FORECAST 30-Jan-2023 18Z



METSIT 06Z 29-Jan PRESSURE PATTERN CONTINUES TO WEAKEN AS LOW PRESSURE ON THE ROSS ICE SHELF FILLS AND HIGH PRESSURE BUILDS INTO THE ROSS SEA FROM THE NORTH. EXPECT EASING WINDS, CALMING SEAS, AND PERIODS OF REDUCED VISIBILITY IN FOG.

FORECASTER NOTES

VALID TIME	29-Jan 12Z	29-Jan 18Z	30-Jan 00Z	30-Jan 06Z	30-Jan 12Z	30-Jan 18Z	31-Jan 00Z	31-Jan 06Z
SKY CONDITION	CLOUDY	CLOUDY	CLOUDY	MOSTLY CLOUDY	CLOUDY	MOSTLY CLOUDY	MOSTLY CLOUDY	CLOUDY
WEATHER	FOG	FOG	FOG	NONE	SNOW & FOG	NONE	NONE	NONE
VISIBILITY (NM)	3 - 5	3 - 5	3 - 5	UNRESTRICTED	1 - 3	UNRESTRICTED	UNRESTRICTED	UNRESTRICTED
SFC WINDS (DIR & KTS)	SW 15-20	SW 10 GUST 20	SW 5-10 GUST 20	W 5-10	W 5-10	W 5-10	NW 5-10	NW 5
SFC MAX/MIN (°C)	-1/-3				-1/-3			
SST RANGE (°C)	0/-1				0/-1			
SEAS (DIR & FT)	W 4-6	NW 4-6	NW 3-5	N 3-5	N 3-5	N 3-5	N 3-5	N 2-4
ICE ACCRETION	LIGHT	LIGHT	LIGHT	LIGHT	LIGHT	LIGHT	LIGHT	LIGHT