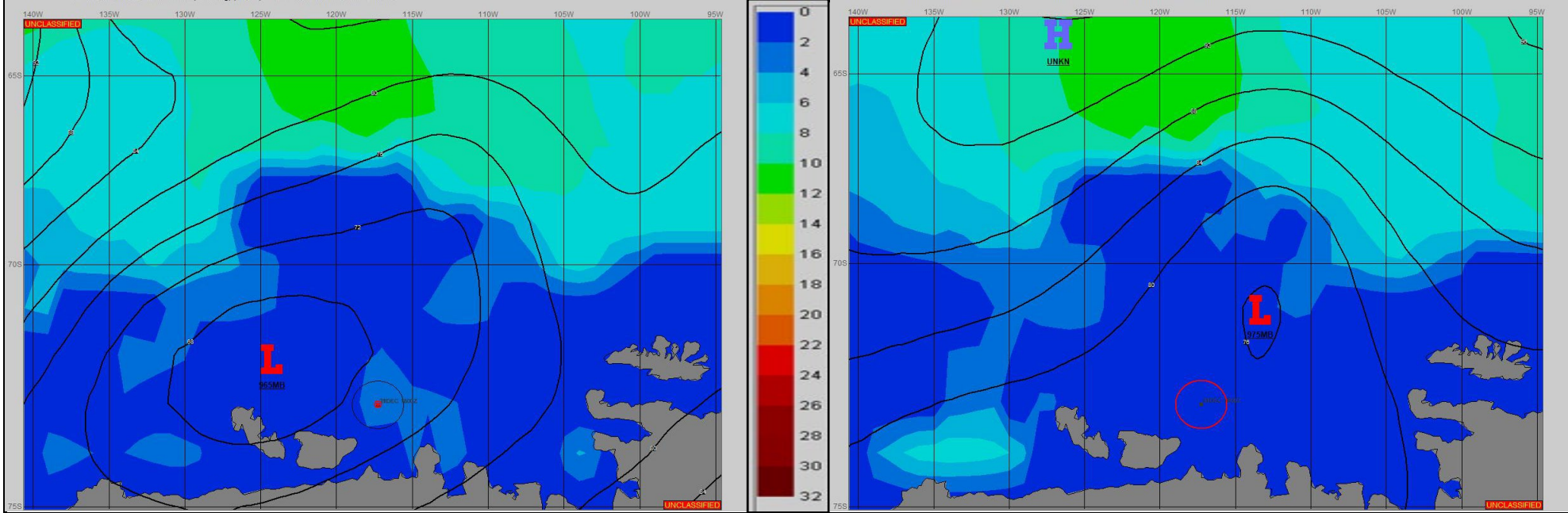


SURFACE ANALYSIS 30-Dec-2023 06Z

SURFACE FORECAST 31-Dec-2023 18Z



METSIT 06Z 30-Dec 965MB LOW NEAR 72S 124W WILL MOVE EAST-NORTHEAST AND FILL TO 979MB NEAR 71S 109W BY THE END OF THE FORECAST PERIOD AS A RIDGE OF HIGH PRESSURE BUILDS IN FROM THE WEST-NORTHWEST. EXPECT REDUCED VISIBILITY IN FOG AND LIGHT PRECIPITATION IN PROXIMITY TO THE LOW. WINDS WILL EASE WITH SLOWLY IMPROVING CONDITIONS FROM 31/0000Z.

FORECASTER NOTES

VALID TIME	30-Dec 12Z	30-Dec 18Z	31-Dec 00Z	31-Dec 06Z	31-Dec 12Z	31-Dec 18Z	1-Jan 00Z	1-Jan 06Z
SKY CONDITION	CLOUDY	CLOUDY	CLOUDY	CLOUDY	CLOUDY	CLOUDY	MOSTLY CLOUDY	PARTLY CLOUDY
WEATHER	SNOW & FOG	SNOW & FOG	SNOW & FOG	SNOW & FOG	SNOW & FOG	SNOW & FOG	FOG	FOG
VISIBILITY (NM)	<1/2	1/2 - 1	1/2 - 1	1/2 - 1	1/2 - 1	1 - 3	2 - 4	2 - 4
SFC WINDS (DIR & KTS)	NE 15-20	NE 15-20 GUST 25	E 10-15	NE 5	E -5	SE 5	S 5-10	S 5
SFC MAX/MIN (°C)	0/-2				0/-2			
SST RANGE (°C)	0/-1				0/-1			
SEAS (DIR & FT)	NE 1-3	ENE 1-3	E 1-3	E 1-3	E 0-2	SE 0-2	SE 0-2	SE 0-2
ICE ACCRETION	LIGHT	LIGHT	LIGHT	LIGHT	LIGHT	LIGHT	LIGHT	LIGHT