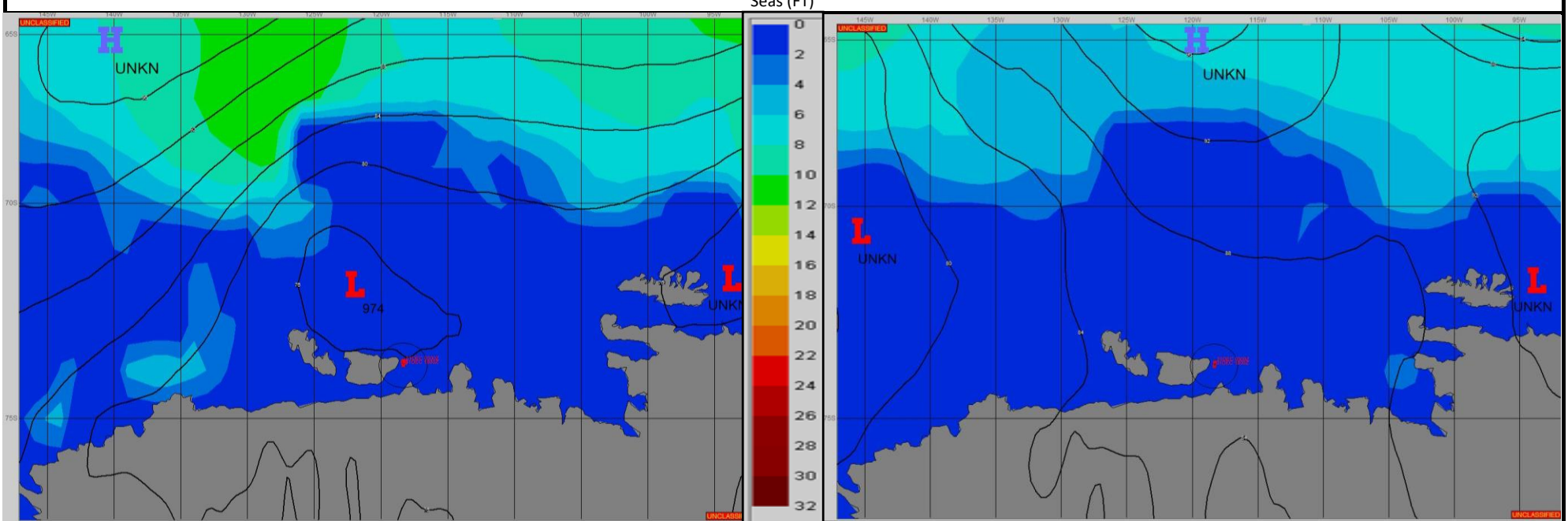


**SURFACE ANALYSIS 31-Dec-2023 06Z**

**SURFACE FORECAST 1-Jan-2024 18Z**



**METSIT 06Z 31-Dec** A 974MB LOW NEAR 72S 126W WILL CONTINUE TO MOVE EAST-NORTHEAST AND FILL AS A RIDGE OF HIGH PRESSURE BUILDS IN FROM THE WEST-NORTHWEST. INDICATIONS ARE FOR LIGHT PRECIPITATION ENDING EARLY WITH REDUCED VISIBILITY IN FOG PERSISTING ALONG WITH LIGHT WINDS. EXPECT CLOUD COVER PERSISTING AS AREAS OF FOG GRADUALLY DISSIPATE WITH VISIBILITY INCREASING INTO THE 1-3NM RANGE AFTER 1 JAN 1800Z.

**FORECASTER NOTES** Winds may differ from those forecast due to funneling/sheltering effects of islands.

VALID TIME	31-Dec 12Z	31-Dec 18Z	1-Jan 00Z	1-Jan 06Z	1-Jan 12Z	1-Jan 18Z	2-Jan 00Z	2-Jan 06Z
SKY CONDITION	CLOUDY	CLOUDY	MOSTLY CLOUDY	MOSTLY CLOUDY	CLOUDY	MOSTLY CLOUDY	CLOUDY	CLOUDY
WEATHER	SNOW & FOG	SNOW & FOG	FOG	FOG	FOG	FOG	FOG	FOG
VISIBILITY (NM)	1/2 - 1	1/2 - 1	1 - 3	1/2 - 1	1/2 - 1	1 - 3	1 - 3	2 - 4
SFC WINDS (DIR & KTS)	S 5	W 5	NW 5	N 5-10	NW 5	NNE 5	NNE 5	NE 5
SFC MAX/MIN (°C)	0/-2				-1/-2			
SST RANGE (°C)	-1.0/-1.5				-1.0/-1.5			
SEAS (DIR & FT)	N 0-1	N 0-1	NW 0-1	NW 0-1	NW 0-1	NW 0-1	N 0-1	N 0-1
ICE ACCRETION	LIGHT	LIGHT	LIGHT	LIGHT	LIGHT	LIGHT	LIGHT	LIGHT